

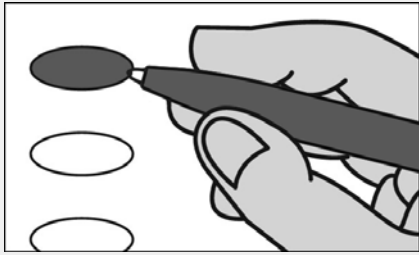
Official Ballot
Gubernatorial Primary Election
July 19, 2022

BS REP 1
001-001

State of Maryland, Queen Anne's County
Republican Ballot

Instructions

Making Selections



Fill in the oval to the left of the name of your choice. You must blacken the oval completely, and do not make any marks outside of the oval. You do not have to vote in every race.



Do not cross out or erase, or your vote may not count. If you make a mistake or a stray mark, you may ask for a new ballot.

Governor / Lt. Governor
Vote for 1

- Dan Cox
and
Gordana Schifanelli
- Robin Ficker
and
LeRoy F. Yegge, Jr.
- Kelly Schulz
and
Jeff Woolford
- Joe Werner
and
Minh Thanh Luong

Comptroller
Vote for 1

- Barry Glassman
Unopposed

Attorney General
Vote for 1

- Michael Anthony Peroutka
- Jim Shalleck

U.S. Senator
Vote for 1

- Chris Chaffee
- George Davis
- Nnabu Eze
- Lorie R. Friend
- Reba A. Hawkins
- Jon McGreevey
- Joseph Perez
- Todd A. Puglisi
- James Tarantin
- John Thormann

Representative in Congress
District 1
Vote for 1

- Andy Harris
Unopposed

State Senator
District 36
Vote for 1

- Rick Bowers
- Stephen S. Hershey, Jr.
- Heather Lynette Sinclair

House of Delegates
District 36

Caroline County
Vote for 1

- Jeff Ghrist
Unopposed

House of Delegates
District 36

Kent County
Vote for 1

- Jay A. Jacobs
Unopposed

House of Delegates
District 36

Queen Anne's County
Vote for 1

- Steve Arentz
Unopposed

County Commissioner At
Large

Vote for 1

- Jim Moran
Unopposed

County Commissioner
District 1

Vote for 1

- Howard A. Dean
- Jack Wilson

County Commissioner
District 2

Vote for 1

- Patrick McLaughlin
- Steve Wilson

County Commissioner
District 3

Vote for 1

- Phil Dumenil
Unopposed

County Commissioner
District 4

Vote for 1

- Chris Corchiarino
- Richard C. Nuzback

Vote Both Sides



State's Attorney Vote for 1
<input type="radio"/> Lance G. Richardson Unopposed

Clerk of the Circuit Court Vote for 1
<input type="radio"/> Katherine Beane Hager Unopposed

Register of Wills Vote for 1
<input type="radio"/> Laura Nan Cook Unopposed

Judge of the Orphans' Court Vote for up to 3
<input type="radio"/> Kimberly Jean Cascia
<input type="radio"/> John T. McQueeney
<input type="radio"/> Roger Twigg
<input type="radio"/> Thomas M. Walsh
<input type="radio"/> Eric Wargotz

Sheriff Vote for 1
<input type="radio"/> Gary Hofmann Unopposed

Republican Central Committee Vote for up to 7
<input type="radio"/> Mike Arntz
<input type="radio"/> Helen Bennett
<input type="radio"/> Richard Bewley, Jr.
<input type="radio"/> Rick Bowers
<input type="radio"/> John N. Costello
<input type="radio"/> Jennifer Lee Fitzmaurice
<input type="radio"/> Tracey Longo Lawrence
<input type="radio"/> Gene Legg
<input type="radio"/> Patrick McLaughlin
<input type="radio"/> John T. McQueeney
<input type="radio"/> Sharon T. Nuzback
<input type="radio"/> Laurie Plemons
<input type="radio"/> Jody Schulz
<input type="radio"/> Tracy Ann Smith

Board of Education At Large Vote for 1 Non-Partisan Contest Candidates in this contest may or may not be affiliated with any political party
<input type="radio"/> Richard Bewley, Jr.
<input type="radio"/> Alexis Capes
<input type="radio"/> Jay Kenty
<input type="radio"/> Kent Laing

End of Ballot 
--

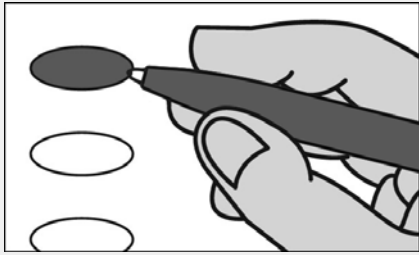
Official Ballot
Gubernatorial Primary Election
July 19, 2022

BS REP 2
002-001

State of Maryland, Queen Anne's County
Republican Ballot

Instructions

Making Selections



Fill in the oval to the left of the name of your choice. You must blacken the oval completely, and do not make any marks outside of the oval. You do not have to vote in every race.



Do not cross out or erase, or your vote may not count. If you make a mistake or a stray mark, you may ask for a new ballot.

Governor / Lt. Governor
Vote for 1

- Dan Cox
and
Gordana Schifanelli
- Robin Ficker
and
LeRoy F. Yegge, Jr.
- Kelly Schulz
and
Jeff Woolford
- Joe Werner
and
Minh Thanh Luong

Comptroller
Vote for 1

- Barry Glassman
Unopposed

Attorney General
Vote for 1

- Michael Anthony Peroutka
- Jim Shalleck

U.S. Senator
Vote for 1

- Chris Chaffee
- George Davis
- Nnabu Eze
- Lorie R. Friend
- Reba A. Hawkins
- Jon McGreevey
- Joseph Perez
- Todd A. Puglisi
- James Tarantin
- John Thormann

Representative in Congress
District 1
Vote for 1

- Andy Harris
Unopposed

State Senator
District 36
Vote for 1

- Rick Bowers
- Stephen S. Hershey, Jr.
- Heather Lynette Sinclair

House of Delegates
District 36

Caroline County
Vote for 1

- Jeff Ghrist
Unopposed

House of Delegates
District 36

Kent County
Vote for 1

- Jay A. Jacobs
Unopposed

House of Delegates
District 36

Queen Anne's County
Vote for 1

- Steve Arentz
Unopposed

County Commissioner At
Large

Vote for 1

- Jim Moran
Unopposed

County Commissioner
District 1

Vote for 1

- Howard A. Dean
- Jack Wilson

County Commissioner
District 2

Vote for 1

- Patrick McLaughlin
- Steve Wilson

County Commissioner
District 3

Vote for 1

- Phil Dumenil
Unopposed

County Commissioner
District 4

Vote for 1

- Chris Corchiarino
- Richard C. Nuzback

Vote Both Sides



State's Attorney

Vote for 1

- Lance G. Richardson**
Unopposed

Clerk of the Circuit Court

Vote for 1

- Katherine Beane Hager**
Unopposed

Register of Wills

Vote for 1

- Laura Nan Cook**
Unopposed

Judge of the Orphans' Court

Vote for up to 3

- Kimberly Jean Cascia**
- John T. McQueeney**
- Roger Twigg**
- Thomas M. Walsh**
- Eric Wargotz**

Sheriff

Vote for 1

- Gary Hofmann**
Unopposed

Republican Central Committee

Vote for up to 7

- Mike Arntz**
- Helen Bennett**
- Richard Bewley, Jr.**
- Rick Bowers**
- John N. Costello**
- Jennifer Lee Fitzmaurice**
- Tracey Longo Lawrence**
- Gene Legg**
- Patrick McLaughlin**
- John T. McQueeney**
- Sharon T. Nuzback**
- Laurie Plemons**
- Jody Schulz**
- Tracy Ann Smith**

Board of Education At Large

Vote for 1

Non-Partisan Contest

Candidates in this contest may or may not be affiliated with any political party

- Richard Bewley, Jr.**
- Alexis Capes**
- Jay Kenty**
- Kent Laing**

End of Ballot



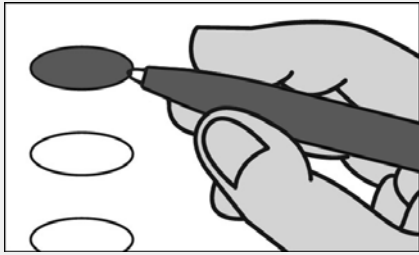
Official Ballot
Gubernatorial Primary Election
July 19, 2022

BS REP 3
003-002

State of Maryland, Queen Anne's County
Republican Ballot

Instructions

Making Selections



Fill in the oval to the left of the name of your choice. You must blacken the oval completely, and do not make any marks outside of the oval. You do not have to vote in every race.



Do not cross out or erase, or your vote may not count. If you make a mistake or a stray mark, you may ask for a new ballot.

Governor / Lt. Governor
Vote for 1

- Dan Cox
and
Gordana Schifanelli
- Robin Ficker
and
LeRoy F. Yegge, Jr.
- Kelly Schulz
and
Jeff Woolford
- Joe Werner
and
Minh Thanh Luong

Comptroller
Vote for 1

- Barry Glassman
Unopposed

Attorney General
Vote for 1

- Michael Anthony Peroutka
- Jim Shalleck

U.S. Senator
Vote for 1

- Chris Chaffee
- George Davis
- Nnabu Eze
- Lorie R. Friend
- Reba A. Hawkins
- Jon McGreevey
- Joseph Perez
- Todd A. Puglisi
- James Tarantin
- John Thormann

Representative in Congress
District 1
Vote for 1

- Andy Harris
Unopposed

State Senator
District 36
Vote for 1

- Rick Bowers
- Stephen S. Hershey, Jr.
- Heather Lynette Sinclair

House of Delegates
District 36

Caroline County
Vote for 1

- Jeff Ghrist
Unopposed

House of Delegates
District 36

Kent County
Vote for 1

- Jay A. Jacobs
Unopposed

House of Delegates
District 36

Queen Anne's County
Vote for 1

- Steve Arentz
Unopposed

County Commissioner At
Large

Vote for 1

- Jim Moran
Unopposed

County Commissioner
District 1

Vote for 1

- Howard A. Dean
- Jack Wilson

County Commissioner
District 2

Vote for 1

- Patrick McLaughlin
- Steve Wilson

County Commissioner
District 3

Vote for 1

- Phil Dumenil
Unopposed

County Commissioner
District 4

Vote for 1

- Chris Corchiarino
- Richard C. Nuzback

Vote Both Sides



State's Attorney

Vote for 1

- Lance G. Richardson**
Unopposed

Clerk of the Circuit Court

Vote for 1

- Katherine Beane Hager**
Unopposed

Register of Wills

Vote for 1

- Laura Nan Cook**
Unopposed

Judge of the Orphans' Court

Vote for up to 3

- Kimberly Jean Cascia**
- John T. McQueeney**
- Roger Twigg**
- Thomas M. Walsh**
- Eric Wargotz**

Sheriff

Vote for 1

- Gary Hofmann**
Unopposed

Republican Central Committee

Vote for up to 7

- Mike Arntz**
- Helen Bennett**
- Richard Bewley, Jr.**
- Rick Bowers**
- John N. Costello**
- Jennifer Lee Fitzmaurice**
- Tracey Longo Lawrence**
- Gene Legg**
- Patrick McLaughlin**
- John T. McQueeney**
- Sharon T. Nuzback**
- Laurie Plemons**
- Jody Schulz**
- Tracy Ann Smith**

Board of Education At Large

Vote for 1

Non-Partisan Contest

Candidates in this contest may or may not be affiliated with any political party

- Richard Bewley, Jr.**
- Alexis Capes**
- Jay Kenty**
- Kent Laing**

End of Ballot



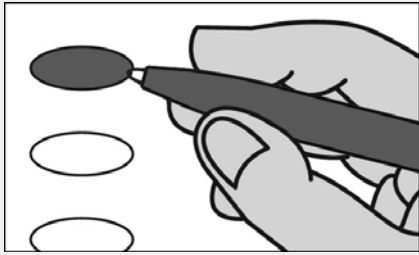
Official Ballot
Gubernatorial Primary Election
July 19, 2022

BS REP 4
004-001

State of Maryland, Queen Anne's County
Republican Ballot

Instructions

Making Selections



Fill in the oval to the left of the name of your choice. You must blacken the oval completely, and do not make any marks outside of the oval. You do not have to vote in every race.



Do not cross out or erase, or your vote may not count. If you make a mistake or a stray mark, you may ask for a new ballot.

**Governor / Lt. Governor
Vote for 1**

- Dan Cox
and
Gordana Schifanelli
- Robin Ficker
and
LeRoy F. Yegge, Jr.
- Kelly Schulz
and
Jeff Woolford
- Joe Werner
and
Minh Thanh Luong

**Comptroller
Vote for 1**

- Barry Glassman
Unopposed

**Attorney General
Vote for 1**

- Michael Anthony Peroutka
- Jim Shalleck

**U.S. Senator
Vote for 1**

- Chris Chaffee
- George Davis
- Nnabu Eze
- Lorie R. Friend
- Reba A. Hawkins
- Jon McGreevey
- Joseph Perez
- Todd A. Puglisi
- James Tarantin
- John Thormann

**Representative in Congress
District 1
Vote for 1**

- Andy Harris
Unopposed

**State Senator
District 36
Vote for 1**

- Rick Bowers
- Stephen S. Hershey, Jr.
- Heather Lynette Sinclair

**House of Delegates
District 36**

**Caroline County
Vote for 1**

- Jeff Ghrist
Unopposed

**House of Delegates
District 36**

**Kent County
Vote for 1**

- Jay A. Jacobs
Unopposed

**House of Delegates
District 36**

**Queen Anne's County
Vote for 1**

- Steve Arentz
Unopposed

**County Commissioner At
Large**

Vote for 1

- Jim Moran
Unopposed

**County Commissioner
District 1**

Vote for 1

- Howard A. Dean
- Jack Wilson

**County Commissioner
District 2**

Vote for 1

- Patrick McLaughlin
- Steve Wilson

**County Commissioner
District 3**

Vote for 1

- Phil Dumenil
Unopposed

**County Commissioner
District 4**

Vote for 1

- Chris Corchiarino
- Richard C. Nuzback

Vote Both Sides



State's Attorney

Vote for 1

- Lance G. Richardson**
Unopposed

Clerk of the Circuit Court

Vote for 1

- Katherine Beane Hager**
Unopposed

Register of Wills

Vote for 1

- Laura Nan Cook**
Unopposed

Judge of the Orphans' Court

Vote for up to 3

- Kimberly Jean Cascia**
- John T. McQueeney**
- Roger Twigg**
- Thomas M. Walsh**
- Eric Wargotz**

Sheriff

Vote for 1

- Gary Hofmann**
Unopposed

Republican Central Committee

Vote for up to 7

- Mike Arntz**
- Helen Bennett**
- Richard Bewley, Jr.**
- Rick Bowers**
- John N. Costello**
- Jennifer Lee Fitzmaurice**
- Tracey Longo Lawrence**
- Gene Legg**
- Patrick McLaughlin**
- John T. McQueeney**
- Sharon T. Nuzback**
- Laurie Plemons**
- Jody Schulz**
- Tracy Ann Smith**

Board of Education At Large

Vote for 1

Non-Partisan Contest

Candidates in this contest may or may not be affiliated with any political party

- Richard Bewley, Jr.**
- Alexis Capes**
- Jay Kenty**
- Kent Laing**

End of Ballot



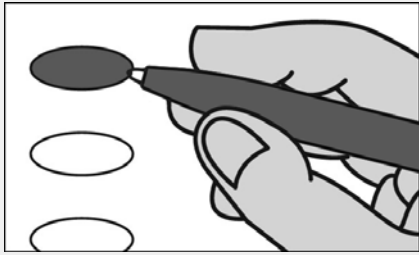
Official Ballot
Gubernatorial Primary Election
July 19, 2022

BS REP 5
004-002

State of Maryland, Queen Anne's County
Republican Ballot

Instructions

Making Selections



Fill in the oval to the left of the name of your choice. You must blacken the oval completely, and do not make any marks outside of the oval. You do not have to vote in every race.



Do not cross out or erase, or your vote may not count. If you make a mistake or a stray mark, you may ask for a new ballot.

**Governor / Lt. Governor
Vote for 1**

- Dan Cox
and
Gordana Schifanelli
- Robin Ficker
and
LeRoy F. Yegge, Jr.
- Kelly Schulz
and
Jeff Woolford
- Joe Werner
and
Minh Thanh Luong

**Comptroller
Vote for 1**

- Barry Glassman
Unopposed

**Attorney General
Vote for 1**

- Michael Anthony Peroutka
- Jim Shalleck

**U.S. Senator
Vote for 1**

- Chris Chaffee
- George Davis
- Nnabu Eze
- Lorie R. Friend
- Reba A. Hawkins
- Jon McGreevey
- Joseph Perez
- Todd A. Puglisi
- James Tarantin
- John Thormann

**Representative in Congress
District 1
Vote for 1**

- Andy Harris
Unopposed

**State Senator
District 36
Vote for 1**

- Rick Bowers
- Stephen S. Hershey, Jr.
- Heather Lynette Sinclair

**House of Delegates
District 36**

**Caroline County
Vote for 1**

- Jeff Ghrist
Unopposed

**House of Delegates
District 36**

**Kent County
Vote for 1**

- Jay A. Jacobs
Unopposed

**House of Delegates
District 36**

**Queen Anne's County
Vote for 1**

- Steve Arentz
Unopposed

**County Commissioner At
Large**

Vote for 1

- Jim Moran
Unopposed

**County Commissioner
District 1**

Vote for 1

- Howard A. Dean
- Jack Wilson

**County Commissioner
District 2**

Vote for 1

- Patrick McLaughlin
- Steve Wilson

**County Commissioner
District 3**

Vote for 1

- Phil Dumenil
Unopposed

**County Commissioner
District 4**

Vote for 1

- Chris Corchiarino
- Richard C. Nuzback

Vote Both Sides



State's Attorney Vote for 1
<input type="radio"/> Lance G. Richardson Unopposed

Clerk of the Circuit Court Vote for 1
<input type="radio"/> Katherine Beane Hager Unopposed

Register of Wills Vote for 1
<input type="radio"/> Laura Nan Cook Unopposed

Judge of the Orphans' Court Vote for up to 3
<input type="radio"/> Kimberly Jean Cascia
<input type="radio"/> John T. McQueeney
<input type="radio"/> Roger Twigg
<input type="radio"/> Thomas M. Walsh
<input type="radio"/> Eric Wargotz

Sheriff Vote for 1
<input type="radio"/> Gary Hofmann Unopposed

Republican Central Committee Vote for up to 7
<input type="radio"/> Mike Arntz
<input type="radio"/> Helen Bennett
<input type="radio"/> Richard Bewley, Jr.
<input type="radio"/> Rick Bowers
<input type="radio"/> John N. Costello
<input type="radio"/> Jennifer Lee Fitzmaurice
<input type="radio"/> Tracey Longo Lawrence
<input type="radio"/> Gene Legg
<input type="radio"/> Patrick McLaughlin
<input type="radio"/> John T. McQueeney
<input type="radio"/> Sharon T. Nuzback
<input type="radio"/> Laurie Plemons
<input type="radio"/> Jody Schulz
<input type="radio"/> Tracy Ann Smith

Board of Education At Large Vote for 1 Non-Partisan Contest Candidates in this contest may or may not be affiliated with any political party
<input type="radio"/> Richard Bewley, Jr.
<input type="radio"/> Alexis Capes
<input type="radio"/> Jay Kenty
<input type="radio"/> Kent Laing

End of Ballot 
--

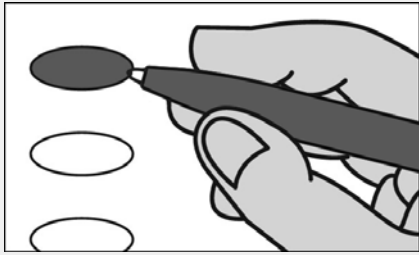
Official Ballot
Gubernatorial Primary Election
July 19, 2022

BS REP 6
004-003

State of Maryland, Queen Anne's County
Republican Ballot

Instructions

Making Selections



Fill in the oval to the left of the name of your choice. You must blacken the oval completely, and do not make any marks outside of the oval. You do not have to vote in every race.



Do not cross out or erase, or your vote may not count. If you make a mistake or a stray mark, you may ask for a new ballot.

Governor / Lt. Governor
Vote for 1

- Dan Cox and Gordana Schifanelli
- Robin Ficker and LeRoy F. Yegge, Jr.
- Kelly Schulz and Jeff Woolford
- Joe Werner and Minh Thanh Luong

Comptroller
Vote for 1

- Barry Glassman Unopposed

Attorney General
Vote for 1

- Michael Anthony Peroutka
- Jim Shalleck

U.S. Senator
Vote for 1

- Chris Chaffee
- George Davis
- Nnabu Eze
- Lorie R. Friend
- Reba A. Hawkins
- Jon McGreevey
- Joseph Perez
- Todd A. Puglisi
- James Tarantin
- John Thormann

Representative in Congress
District 1
Vote for 1

- Andy Harris Unopposed

State Senator
District 36
Vote for 1

- Rick Bowers
- Stephen S. Hershey, Jr.
- Heather Lynette Sinclair

House of Delegates
District 36

Caroline County
Vote for 1

- Jeff Ghrist Unopposed

House of Delegates
District 36

Kent County
Vote for 1

- Jay A. Jacobs Unopposed

House of Delegates
District 36

Queen Anne's County
Vote for 1

- Steve Arentz Unopposed

County Commissioner At Large
Vote for 1

- Jim Moran Unopposed

County Commissioner
District 1
Vote for 1

- Howard A. Dean
- Jack Wilson

County Commissioner
District 2
Vote for 1

- Patrick McLaughlin
- Steve Wilson

County Commissioner
District 3
Vote for 1

- Phil Dumenil Unopposed

County Commissioner
District 4
Vote for 1

- Chris Corchiarino
- Richard C. Nuzback

Vote Both Sides



State's Attorney Vote for 1
<input type="radio"/> Lance G. Richardson Unopposed

Clerk of the Circuit Court Vote for 1
<input type="radio"/> Katherine Beane Hager Unopposed

Register of Wills Vote for 1
<input type="radio"/> Laura Nan Cook Unopposed

Judge of the Orphans' Court Vote for up to 3
<input type="radio"/> Kimberly Jean Cascia
<input type="radio"/> John T. McQueeney
<input type="radio"/> Roger Twigg
<input type="radio"/> Thomas M. Walsh
<input type="radio"/> Eric Wargotz

Sheriff Vote for 1
<input type="radio"/> Gary Hofmann Unopposed

Republican Central Committee Vote for up to 7
<input type="radio"/> Mike Arntz
<input type="radio"/> Helen Bennett
<input type="radio"/> Richard Bewley, Jr.
<input type="radio"/> Rick Bowers
<input type="radio"/> John N. Costello
<input type="radio"/> Jennifer Lee Fitzmaurice
<input type="radio"/> Tracey Longo Lawrence
<input type="radio"/> Gene Legg
<input type="radio"/> Patrick McLaughlin
<input type="radio"/> John T. McQueeney
<input type="radio"/> Sharon T. Nuzback
<input type="radio"/> Laurie Plemons
<input type="radio"/> Jody Schulz
<input type="radio"/> Tracy Ann Smith

Board of Education At Large Vote for 1 Non-Partisan Contest Candidates in this contest may or may not be affiliated with any political party
<input type="radio"/> Richard Bewley, Jr.
<input type="radio"/> Alexis Capes
<input type="radio"/> Jay Kenty
<input type="radio"/> Kent Laing

End of Ballot 
--

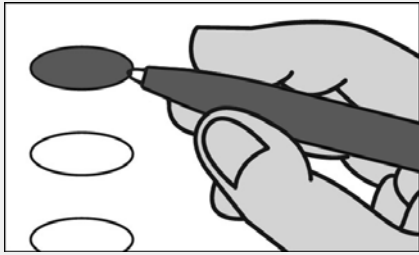
Official Ballot
Gubernatorial Primary Election
July 19, 2022

BS REP 7
004-006

State of Maryland, Queen Anne's County
Republican Ballot

Instructions

Making Selections



Fill in the oval to the left of the name of your choice. You must blacken the oval completely, and do not make any marks outside of the oval. You do not have to vote in every race.



Do not cross out or erase, or your vote may not count. If you make a mistake or a stray mark, you may ask for a new ballot.

Governor / Lt. Governor
Vote for 1

- Dan Cox
and
Gordana Schifanelli
- Robin Ficker
and
LeRoy F. Yegge, Jr.
- Kelly Schulz
and
Jeff Woolford
- Joe Werner
and
Minh Thanh Luong

Comptroller
Vote for 1

- Barry Glassman
Unopposed

Attorney General
Vote for 1

- Michael Anthony Peroutka
- Jim Shalleck

U.S. Senator
Vote for 1

- Chris Chaffee
- George Davis
- Nnabu Eze
- Lorie R. Friend
- Reba A. Hawkins
- Jon McGreevey
- Joseph Perez
- Todd A. Puglisi
- James Tarantin
- John Thormann

Representative in Congress
District 1
Vote for 1

- Andy Harris
Unopposed

State Senator
District 36
Vote for 1

- Rick Bowers
- Stephen S. Hershey, Jr.
- Heather Lynette Sinclair

House of Delegates
District 36

Caroline County
Vote for 1

- Jeff Ghrist
Unopposed

House of Delegates
District 36

Kent County
Vote for 1

- Jay A. Jacobs
Unopposed

House of Delegates
District 36

Queen Anne's County
Vote for 1

- Steve Arentz
Unopposed

County Commissioner At
Large

Vote for 1

- Jim Moran
Unopposed

County Commissioner
District 1

Vote for 1

- Howard A. Dean
- Jack Wilson

County Commissioner
District 2

Vote for 1

- Patrick McLaughlin
- Steve Wilson

County Commissioner
District 3

Vote for 1

- Phil Dumenil
Unopposed

County Commissioner
District 4

Vote for 1

- Chris Corchiarino
- Richard C. Nuzback

Vote Both Sides



State's Attorney Vote for 1
<input type="radio"/> Lance G. Richardson Unopposed

Clerk of the Circuit Court Vote for 1
<input type="radio"/> Katherine Beane Hager Unopposed

Register of Wills Vote for 1
<input type="radio"/> Laura Nan Cook Unopposed

Judge of the Orphans' Court Vote for up to 3
<input type="radio"/> Kimberly Jean Cascia
<input type="radio"/> John T. McQueeney
<input type="radio"/> Roger Twigg
<input type="radio"/> Thomas M. Walsh
<input type="radio"/> Eric Wargotz

Sheriff Vote for 1
<input type="radio"/> Gary Hofmann Unopposed

Republican Central Committee Vote for up to 7
<input type="radio"/> Mike Arntz
<input type="radio"/> Helen Bennett
<input type="radio"/> Richard Bewley, Jr.
<input type="radio"/> Rick Bowers
<input type="radio"/> John N. Costello
<input type="radio"/> Jennifer Lee Fitzmaurice
<input type="radio"/> Tracey Longo Lawrence
<input type="radio"/> Gene Legg
<input type="radio"/> Patrick McLaughlin
<input type="radio"/> John T. McQueeney
<input type="radio"/> Sharon T. Nuzback
<input type="radio"/> Laurie Plemons
<input type="radio"/> Jody Schulz
<input type="radio"/> Tracy Ann Smith

Board of Education At Large Vote for 1 Non-Partisan Contest Candidates in this contest may or may not be affiliated with any political party
<input type="radio"/> Richard Bewley, Jr.
<input type="radio"/> Alexis Capes
<input type="radio"/> Jay Kenty
<input type="radio"/> Kent Laing

End of Ballot 
--

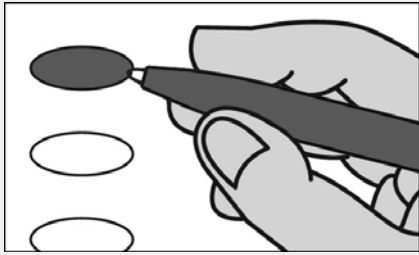
Official Ballot
Gubernatorial Primary Election
July 19, 2022

BS REP 8
005-001

State of Maryland, Queen Anne's County
Republican Ballot

Instructions

Making Selections



Fill in the oval to the left of the name of your choice. You must blacken the oval completely, and do not make any marks outside of the oval. You do not have to vote in every race.



Do not cross out or erase, or your vote may not count. If you make a mistake or a stray mark, you may ask for a new ballot.

**Governor / Lt. Governor
Vote for 1**

- Dan Cox
and
Gordana Schifanelli
- Robin Ficker
and
LeRoy F. Yegge, Jr.
- Kelly Schulz
and
Jeff Woolford
- Joe Werner
and
Minh Thanh Luong

**Comptroller
Vote for 1**

- Barry Glassman
Unopposed

**Attorney General
Vote for 1**

- Michael Anthony Peroutka
- Jim Shalleck

**U.S. Senator
Vote for 1**

- Chris Chaffee
- George Davis
- Nnabu Eze
- Lorie R. Friend
- Reba A. Hawkins
- Jon McGreevey
- Joseph Perez
- Todd A. Puglisi
- James Tarantin
- John Thormann

**Representative in Congress
District 1
Vote for 1**

- Andy Harris
Unopposed

**State Senator
District 36
Vote for 1**

- Rick Bowers
- Stephen S. Hershey, Jr.
- Heather Lynette Sinclair

**House of Delegates
District 36**

**Caroline County
Vote for 1**

- Jeff Ghrist
Unopposed

**House of Delegates
District 36**

**Kent County
Vote for 1**

- Jay A. Jacobs
Unopposed

**House of Delegates
District 36**

**Queen Anne's County
Vote for 1**

- Steve Arentz
Unopposed

**County Commissioner At
Large**

Vote for 1

- Jim Moran
Unopposed

**County Commissioner
District 1**

Vote for 1

- Howard A. Dean
- Jack Wilson

**County Commissioner
District 2**

Vote for 1

- Patrick McLaughlin
- Steve Wilson

**County Commissioner
District 3**

Vote for 1

- Phil Dumenil
Unopposed

**County Commissioner
District 4**

Vote for 1

- Chris Corchiarino
- Richard C. Nuzback

Vote Both Sides



State's Attorney Vote for 1
<input type="radio"/> Lance G. Richardson Unopposed

Clerk of the Circuit Court Vote for 1
<input type="radio"/> Katherine Beane Hager Unopposed

Register of Wills Vote for 1
<input type="radio"/> Laura Nan Cook Unopposed

Judge of the Orphans' Court Vote for up to 3
<input type="radio"/> Kimberly Jean Cascia
<input type="radio"/> John T. McQueeney
<input type="radio"/> Roger Twigg
<input type="radio"/> Thomas M. Walsh
<input type="radio"/> Eric Wargotz

Sheriff Vote for 1
<input type="radio"/> Gary Hofmann Unopposed

Republican Central Committee Vote for up to 7
<input type="radio"/> Mike Arntz
<input type="radio"/> Helen Bennett
<input type="radio"/> Richard Bewley, Jr.
<input type="radio"/> Rick Bowers
<input type="radio"/> John N. Costello
<input type="radio"/> Jennifer Lee Fitzmaurice
<input type="radio"/> Tracey Longo Lawrence
<input type="radio"/> Gene Legg
<input type="radio"/> Patrick McLaughlin
<input type="radio"/> John T. McQueeney
<input type="radio"/> Sharon T. Nuzback
<input type="radio"/> Laurie Plemons
<input type="radio"/> Jody Schulz
<input type="radio"/> Tracy Ann Smith

Board of Education At Large Vote for 1 Non-Partisan Contest Candidates in this contest may or may not be affiliated with any political party
<input type="radio"/> Richard Bewley, Jr.
<input type="radio"/> Alexis Capes
<input type="radio"/> Jay Kenty
<input type="radio"/> Kent Laing

End of Ballot 
--

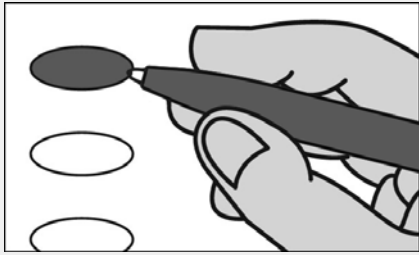
Official Ballot
Gubernatorial Primary Election
July 19, 2022

BS REP 9
005-002

State of Maryland, Queen Anne's County
Republican Ballot

Instructions

Making Selections



Fill in the oval to the left of the name of your choice. You must blacken the oval completely, and do not make any marks outside of the oval. You do not have to vote in every race.



Do not cross out or erase, or your vote may not count. If you make a mistake or a stray mark, you may ask for a new ballot.

**Governor / Lt. Governor
Vote for 1**

- Dan Cox
and
Gordana Schifanelli
- Robin Ficker
and
LeRoy F. Yegge, Jr.
- Kelly Schulz
and
Jeff Woolford
- Joe Werner
and
Minh Thanh Luong

**Comptroller
Vote for 1**

- Barry Glassman
Unopposed

**Attorney General
Vote for 1**

- Michael Anthony Peroutka
- Jim Shalleck

**U.S. Senator
Vote for 1**

- Chris Chaffee
- George Davis
- Nnabu Eze
- Lorie R. Friend
- Reba A. Hawkins
- Jon McGreevey
- Joseph Perez
- Todd A. Puglisi
- James Tarantin
- John Thormann

**Representative in Congress
District 1
Vote for 1**

- Andy Harris
Unopposed

**State Senator
District 36
Vote for 1**

- Rick Bowers
- Stephen S. Hershey, Jr.
- Heather Lynette Sinclair

**House of Delegates
District 36**

**Caroline County
Vote for 1**

- Jeff Ghrist
Unopposed

**House of Delegates
District 36**

**Kent County
Vote for 1**

- Jay A. Jacobs
Unopposed

**House of Delegates
District 36**

**Queen Anne's County
Vote for 1**

- Steve Arentz
Unopposed

**County Commissioner At
Large**

Vote for 1

- Jim Moran
Unopposed

**County Commissioner
District 1**

Vote for 1

- Howard A. Dean
- Jack Wilson

**County Commissioner
District 2**

Vote for 1

- Patrick McLaughlin
- Steve Wilson

**County Commissioner
District 3**

Vote for 1

- Phil Dumenil
Unopposed

**County Commissioner
District 4**

Vote for 1

- Chris Corchiarino
- Richard C. Nuzback

Vote Both Sides



State's Attorney Vote for 1
<input type="radio"/> Lance G. Richardson Unopposed

Clerk of the Circuit Court Vote for 1
<input type="radio"/> Katherine Beane Hager Unopposed

Register of Wills Vote for 1
<input type="radio"/> Laura Nan Cook Unopposed

Judge of the Orphans' Court Vote for up to 3
<input type="radio"/> Kimberly Jean Cascia
<input type="radio"/> John T. McQueeney
<input type="radio"/> Roger Twigg
<input type="radio"/> Thomas M. Walsh
<input type="radio"/> Eric Wargotz

Sheriff Vote for 1
<input type="radio"/> Gary Hofmann Unopposed

Republican Central Committee Vote for up to 7
<input type="radio"/> Mike Arntz
<input type="radio"/> Helen Bennett
<input type="radio"/> Richard Bewley, Jr.
<input type="radio"/> Rick Bowers
<input type="radio"/> John N. Costello
<input type="radio"/> Jennifer Lee Fitzmaurice
<input type="radio"/> Tracey Longo Lawrence
<input type="radio"/> Gene Legg
<input type="radio"/> Patrick McLaughlin
<input type="radio"/> John T. McQueeney
<input type="radio"/> Sharon T. Nuzback
<input type="radio"/> Laurie Plemons
<input type="radio"/> Jody Schulz
<input type="radio"/> Tracy Ann Smith

Board of Education At Large Vote for 1 Non-Partisan Contest Candidates in this contest may or may not be affiliated with any political party
<input type="radio"/> Richard Bewley, Jr.
<input type="radio"/> Alexis Capes
<input type="radio"/> Jay Kenty
<input type="radio"/> Kent Laing

End of Ballot 
--

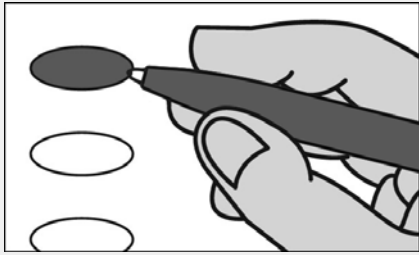
Official Ballot
Gubernatorial Primary Election
July 19, 2022

BS REP 10
006-001

State of Maryland, Queen Anne's County
Republican Ballot

Instructions

Making Selections



Fill in the oval to the left of the name of your choice. You must blacken the oval completely, and do not make any marks outside of the oval. You do not have to vote in every race.



Do not cross out or erase, or your vote may not count. If you make a mistake or a stray mark, you may ask for a new ballot.

Governor / Lt. Governor
Vote for 1

- Dan Cox
and
Gordana Schifanelli
- Robin Ficker
and
LeRoy F. Yegge, Jr.
- Kelly Schulz
and
Jeff Woolford
- Joe Werner
and
Minh Thanh Luong

Comptroller
Vote for 1

- Barry Glassman
Unopposed

Attorney General
Vote for 1

- Michael Anthony Peroutka
- Jim Shalleck

U.S. Senator
Vote for 1

- Chris Chaffee
- George Davis
- Nnabu Eze
- Lorie R. Friend
- Reba A. Hawkins
- Jon McGreevey
- Joseph Perez
- Todd A. Puglisi
- James Tarantin
- John Thormann

Representative in Congress
District 1
Vote for 1

- Andy Harris
Unopposed

State Senator
District 36
Vote for 1

- Rick Bowers
- Stephen S. Hershey, Jr.
- Heather Lynette Sinclair

House of Delegates
District 36

Caroline County
Vote for 1

- Jeff Ghrist
Unopposed

House of Delegates
District 36

Kent County
Vote for 1

- Jay A. Jacobs
Unopposed

House of Delegates
District 36

Queen Anne's County
Vote for 1

- Steve Arentz
Unopposed

County Commissioner At
Large

Vote for 1

- Jim Moran
Unopposed

County Commissioner
District 1

Vote for 1

- Howard A. Dean
- Jack Wilson

County Commissioner
District 2

Vote for 1

- Patrick McLaughlin
- Steve Wilson

County Commissioner
District 3

Vote for 1

- Phil Dumenil
Unopposed

County Commissioner
District 4

Vote for 1

- Chris Corchiarino
- Richard C. Nuzback

Vote Both Sides



State's Attorney Vote for 1
<input type="radio"/> Lance G. Richardson Unopposed

Clerk of the Circuit Court Vote for 1
<input type="radio"/> Katherine Beane Hager Unopposed

Register of Wills Vote for 1
<input type="radio"/> Laura Nan Cook Unopposed

Judge of the Orphans' Court Vote for up to 3
<input type="radio"/> Kimberly Jean Cascia
<input type="radio"/> John T. McQueeney
<input type="radio"/> Roger Twigg
<input type="radio"/> Thomas M. Walsh
<input type="radio"/> Eric Wargotz

Sheriff Vote for 1
<input type="radio"/> Gary Hofmann Unopposed

Republican Central Committee Vote for up to 7
<input type="radio"/> Mike Arntz
<input type="radio"/> Helen Bennett
<input type="radio"/> Richard Bewley, Jr.
<input type="radio"/> Rick Bowers
<input type="radio"/> John N. Costello
<input type="radio"/> Jennifer Lee Fitzmaurice
<input type="radio"/> Tracey Longo Lawrence
<input type="radio"/> Gene Legg
<input type="radio"/> Patrick McLaughlin
<input type="radio"/> John T. McQueeney
<input type="radio"/> Sharon T. Nuzback
<input type="radio"/> Laurie Plemons
<input type="radio"/> Jody Schulz
<input type="radio"/> Tracy Ann Smith

Board of Education At Large Vote for 1 Non-Partisan Contest Candidates in this contest may or may not be affiliated with any political party
<input type="radio"/> Richard Bewley, Jr.
<input type="radio"/> Alexis Capes
<input type="radio"/> Jay Kenty
<input type="radio"/> Kent Laing

End of Ballot 
--

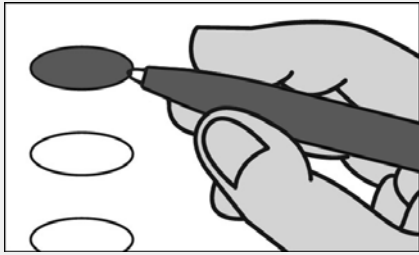
Official Ballot
Gubernatorial Primary Election
July 19, 2022

BS REP 11
007-001

State of Maryland, Queen Anne's County
Republican Ballot

Instructions

Making Selections



Fill in the oval to the left of the name of your choice. You must blacken the oval completely, and do not make any marks outside of the oval. You do not have to vote in every race.



Do not cross out or erase, or your vote may not count. If you make a mistake or a stray mark, you may ask for a new ballot.

Governor / Lt. Governor
Vote for 1

- Dan Cox
and
Gordana Schifanelli
- Robin Ficker
and
LeRoy F. Yegge, Jr.
- Kelly Schulz
and
Jeff Woolford
- Joe Werner
and
Minh Thanh Luong

Comptroller
Vote for 1

- Barry Glassman
Unopposed

Attorney General
Vote for 1

- Michael Anthony Peroutka
- Jim Shalleck

U.S. Senator
Vote for 1

- Chris Chaffee
- George Davis
- Nnabu Eze
- Lorie R. Friend
- Reba A. Hawkins
- Jon McGreevey
- Joseph Perez
- Todd A. Puglisi
- James Tarantin
- John Thormann

Representative in Congress
District 1
Vote for 1

- Andy Harris
Unopposed

State Senator
District 36
Vote for 1

- Rick Bowers
- Stephen S. Hershey, Jr.
- Heather Lynette Sinclair

House of Delegates
District 36

Caroline County
Vote for 1

- Jeff Ghrist
Unopposed

House of Delegates
District 36

Kent County
Vote for 1

- Jay A. Jacobs
Unopposed

House of Delegates
District 36

Queen Anne's County
Vote for 1

- Steve Arentz
Unopposed

County Commissioner At
Large

Vote for 1

- Jim Moran
Unopposed

County Commissioner
District 1

Vote for 1

- Howard A. Dean
- Jack Wilson

County Commissioner
District 2

Vote for 1

- Patrick McLaughlin
- Steve Wilson

County Commissioner
District 3

Vote for 1

- Phil Dumenil
Unopposed

County Commissioner
District 4

Vote for 1

- Chris Corchiarino
- Richard C. Nuzback

Vote Both Sides



State's Attorney Vote for 1
<input type="radio"/> Lance G. Richardson Unopposed

Clerk of the Circuit Court Vote for 1
<input type="radio"/> Katherine Beane Hager Unopposed

Register of Wills Vote for 1
<input type="radio"/> Laura Nan Cook Unopposed

Judge of the Orphans' Court Vote for up to 3
<input type="radio"/> Kimberly Jean Cascia
<input type="radio"/> John T. McQueeney
<input type="radio"/> Roger Twigg
<input type="radio"/> Thomas M. Walsh
<input type="radio"/> Eric Wargotz

Sheriff Vote for 1
<input type="radio"/> Gary Hofmann Unopposed

Republican Central Committee Vote for up to 7
<input type="radio"/> Mike Arntz
<input type="radio"/> Helen Bennett
<input type="radio"/> Richard Bewley, Jr.
<input type="radio"/> Rick Bowers
<input type="radio"/> John N. Costello
<input type="radio"/> Jennifer Lee Fitzmaurice
<input type="radio"/> Tracey Longo Lawrence
<input type="radio"/> Gene Legg
<input type="radio"/> Patrick McLaughlin
<input type="radio"/> John T. McQueeney
<input type="radio"/> Sharon T. Nuzback
<input type="radio"/> Laurie Plemons
<input type="radio"/> Jody Schulz
<input type="radio"/> Tracy Ann Smith

Board of Education At Large Vote for 1 Non-Partisan Contest Candidates in this contest may or may not be affiliated with any political party
<input type="radio"/> Richard Bewley, Jr.
<input type="radio"/> Alexis Capes
<input type="radio"/> Jay Kenty
<input type="radio"/> Kent Laing

End of Ballot 
--

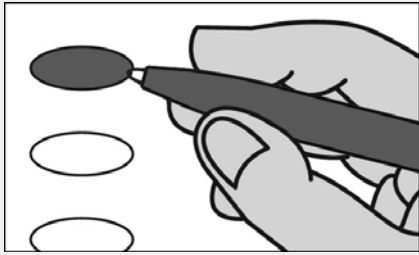
Official Ballot
Gubernatorial Primary Election
July 19, 2022

BS DEM 1
001-001

State of Maryland, Queen Anne's County
Democratic Ballot

Instructions

Making Selections



Fill in the oval to the left of the name of your choice. You must blacken the oval completely, and do not make any marks outside of the oval. You do not have to vote in every race.



Do not cross out or erase, or your vote may not count. If you make a mistake or a stray mark, you may ask for a new ballot.

Governor / Lt. Governor
Vote for 1

- Rushern L. Baker, III
and
Nancy Navarro
- Jon Baron
and
Natalie Williams
- Peter Franchot
and
Monique Anderson-Walker
- Douglas F. Gansler
and
Candace Hollingsworth
- Ralph W. Jaffe
and
Mark Greben
- Ashwani Jain
and
LaTrece Hawkins Lytes
- John King
and
Michelle Daugherty Siri
- Wes Moore
and
Aruna Miller
- Tom Perez
and
Shannon Sneed
- Jerome M. Segal
and
Justinian M. Dispenza

Comptroller
Vote for 1

- Timothy J. Adams
- Brooke Elizabeth Lierman

Attorney General
Vote for 1

- Anthony G. Brown
- Katie Curran O'Malley

U.S. Senator
Vote for 1

- Michelle L. Smith
- Chris Van Hollen

Representative in Congress
District 1
Vote for 1

- R. David Harden
- Heather R. Mizeur

County Commissioner At
Large
Vote for 1

- Merle Joy Schwartz
Unopposed

County Commissioner
District 1
Vote for 1

- Marion Grier
Unopposed

County Commissioner
District 2
Vote for 1

- Andrea Alduino
Unopposed

County Commissioner
District 3
Vote for 1

- Lynn M. Mason
Unopposed

County Commissioner
District 4
Vote for 1

- Deborah Krueger
Unopposed

Judge of the Orphans' Court
Vote for up to 3

- John W. Crook
Unopposed
- Ryan E. Holdgreve
Unopposed
- Crystal Woodward
Unopposed

Vote Both Sides



Democratic Central Committee
Vote for up to 10
No more than half of the members can be elected from the same gender.

Frank W. Alduino
Male

Linda Coveleskie
Female

Connie Lee Kratovil-Lavelle
Female

Deborah Krueger
Female

Lynn M. Mason
Female

Elaine F. McNeil
Female

Michael Morgan
Male

Tom Rider
Male

Barry A. Schwartz
Male

John C. Stires
Male

Board of Education At Large
Vote for 1
Non-Partisan Contest
Candidates in this contest may or may not be affiliated with any political party

Richard Bewley, Jr.

Alexis Capes

Jay Kenty

Kent Laing

End of Ballot



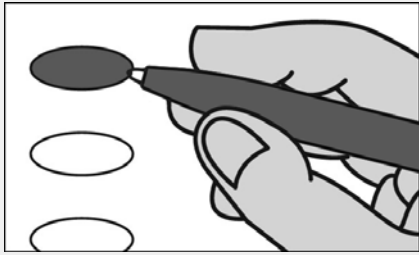
Official Ballot
Gubernatorial Primary Election
July 19, 2022

BS DEM 2
002-001

State of Maryland, Queen Anne's County
Democratic Ballot

Instructions

Making Selections



Fill in the oval to the left of the name of your choice. You must blacken the oval completely, and do not make any marks outside of the oval. You do not have to vote in every race.



Do not cross out or erase, or your vote may not count. If you make a mistake or a stray mark, you may ask for a new ballot.

Governor / Lt. Governor
Vote for 1

- Rushern L. Baker, III
and
Nancy Navarro
- Jon Baron
and
Natalie Williams
- Peter Franchot
and
Monique Anderson-Walker
- Douglas F. Gansler
and
Candace Hollingsworth
- Ralph W. Jaffe
and
Mark Greben
- Ashwani Jain
and
LaTrece Hawkins Lytes
- John King
and
Michelle Daugherty Siri
- Wes Moore
and
Aruna Miller
- Tom Perez
and
Shannon Sneed
- Jerome M. Segal
and
Justinian M. Dispenza

Comptroller
Vote for 1

- Timothy J. Adams
- Brooke Elizabeth Lierman

Attorney General
Vote for 1

- Anthony G. Brown
- Katie Curran O'Malley

U.S. Senator
Vote for 1

- Michelle L. Smith
- Chris Van Hollen

Representative in Congress
District 1
Vote for 1

- R. David Harden
- Heather R. Mizeur

County Commissioner At
Large
Vote for 1

- Merle Joy Schwartz
Unopposed

County Commissioner
District 1
Vote for 1

- Marion Grier
Unopposed

County Commissioner
District 2
Vote for 1

- Andrea Alduino
Unopposed

County Commissioner
District 3
Vote for 1

- Lynn M. Mason
Unopposed

County Commissioner
District 4
Vote for 1

- Deborah Krueger
Unopposed

Judge of the Orphans' Court
Vote for up to 3

- John W. Crook
Unopposed
- Ryan E. Holdgreve
Unopposed
- Crystal Woodward
Unopposed

Vote Both Sides



Democratic Central Committee
Vote for up to 10
No more than half of the members can be elected from the same gender.

Frank W. Alduino
Male

Linda Coveleskie
Female

Connie Lee Kratovil-Lavelle
Female

Deborah Krueger
Female

Lynn M. Mason
Female

Elaine F. McNeil
Female

Michael Morgan
Male

Tom Rider
Male

Barry A. Schwartz
Male

John C. Stires
Male

Board of Education At Large
Vote for 1
Non-Partisan Contest
Candidates in this contest may or may not be affiliated with any political party

Richard Bewley, Jr.

Alexis Capes

Jay Kenty

Kent Laing

End of Ballot



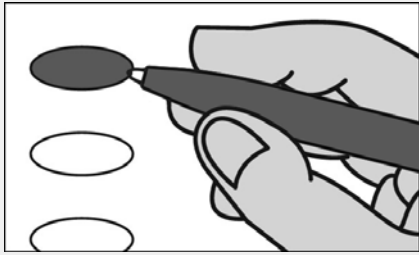
Official Ballot
Gubernatorial Primary Election
July 19, 2022

BS DEM 3
003-002

State of Maryland, Queen Anne's County
Democratic Ballot

Instructions

Making Selections



Fill in the oval to the left of the name of your choice. You must blacken the oval completely, and do not make any marks outside of the oval. You do not have to vote in every race.



Do not cross out or erase, or your vote may not count. If you make a mistake or a stray mark, you may ask for a new ballot.

Governor / Lt. Governor
Vote for 1

- Rushern L. Baker, III
and
Nancy Navarro
- Jon Baron
and
Natalie Williams
- Peter Franchot
and
Monique Anderson-Walker
- Douglas F. Gansler
and
Candace Hollingsworth
- Ralph W. Jaffe
and
Mark Greben
- Ashwani Jain
and
LaTrece Hawkins Lytes
- John King
and
Michelle Daugherty Siri
- Wes Moore
and
Aruna Miller
- Tom Perez
and
Shannon Sneed
- Jerome M. Segal
and
Justinian M. Dispenza

Comptroller
Vote for 1

- Timothy J. Adams
- Brooke Elizabeth Lierman

Attorney General
Vote for 1

- Anthony G. Brown
- Katie Curran O'Malley

U.S. Senator
Vote for 1

- Michelle L. Smith
- Chris Van Hollen

Representative in Congress
District 1
Vote for 1

- R. David Harden
- Heather R. Mizeur

County Commissioner At
Large
Vote for 1

- Merle Joy Schwartz
Unopposed

County Commissioner
District 1
Vote for 1

- Marion Grier
Unopposed

County Commissioner
District 2
Vote for 1

- Andrea Alduino
Unopposed

County Commissioner
District 3
Vote for 1

- Lynn M. Mason
Unopposed

County Commissioner
District 4
Vote for 1

- Deborah Krueger
Unopposed

Judge of the Orphans' Court
Vote for up to 3

- John W. Crook
Unopposed
- Ryan E. Holdgreve
Unopposed
- Crystal Woodward
Unopposed

Vote Both Sides



Democratic Central Committee
Vote for up to 10
No more than half of the members can be elected from the same gender.

Frank W. Alduino
Male

Linda Coveleskie
Female

Connie Lee Kratovil-Lavelle
Female

Deborah Krueger
Female

Lynn M. Mason
Female

Elaine F. McNeil
Female

Michael Morgan
Male

Tom Rider
Male

Barry A. Schwartz
Male

John C. Stires
Male

Board of Education At Large
Vote for 1
Non-Partisan Contest
Candidates in this contest may or may not be affiliated with any political party

Richard Bewley, Jr.

Alexis Capes

Jay Kenty

Kent Laing

End of Ballot



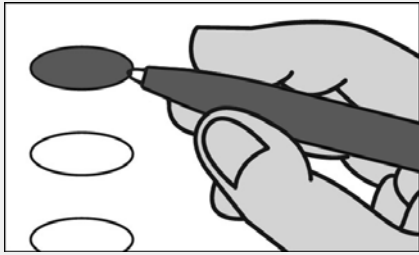
Official Ballot
Gubernatorial Primary Election
July 19, 2022

BS DEM 4
004-001

State of Maryland, Queen Anne's County
Democratic Ballot

Instructions

Making Selections



Fill in the oval to the left of the name of your choice. You must blacken the oval completely, and do not make any marks outside of the oval. You do not have to vote in every race.



Do not cross out or erase, or your vote may not count. If you make a mistake or a stray mark, you may ask for a new ballot.

**Governor / Lt. Governor
Vote for 1**

- Rushern L. Baker, III
and
Nancy Navarro
- Jon Baron
and
Natalie Williams
- Peter Franchot
and
Monique Anderson-Walker
- Douglas F. Gansler
and
Candace Hollingsworth
- Ralph W. Jaffe
and
Mark Greben
- Ashwani Jain
and
LaTrece Hawkins Lytes
- John King
and
Michelle Daugherty Siri
- Wes Moore
and
Aruna Miller
- Tom Perez
and
Shannon Sneed
- Jerome M. Segal
and
Justinian M. Dispenza

**Comptroller
Vote for 1**

- Timothy J. Adams
- Brooke Elizabeth Lierman

**Attorney General
Vote for 1**

- Anthony G. Brown
- Katie Curran O'Malley

**U.S. Senator
Vote for 1**

- Michelle L. Smith
- Chris Van Hollen

**Representative in Congress
District 1
Vote for 1**

- R. David Harden
- Heather R. Mizeur

**County Commissioner At
Large
Vote for 1**

- Merle Joy Schwartz
Unopposed

**County Commissioner
District 1
Vote for 1**

- Marion Grier
Unopposed

**County Commissioner
District 2
Vote for 1**

- Andrea Alduino
Unopposed

**County Commissioner
District 3
Vote for 1**

- Lynn M. Mason
Unopposed

**County Commissioner
District 4
Vote for 1**

- Deborah Krueger
Unopposed

**Judge of the Orphans' Court
Vote for up to 3**

- John W. Crook
Unopposed
- Ryan E. Holdgreve
Unopposed
- Crystal Woodward
Unopposed

Vote Both Sides



Democratic Central Committee
Vote for up to 10
No more than half of the members can be elected from the same gender.

Frank W. Alduino
Male

Linda Coveleskie
Female

Connie Lee Kratovil-Lavelle
Female

Deborah Krueger
Female

Lynn M. Mason
Female

Elaine F. McNeil
Female

Michael Morgan
Male

Tom Rider
Male

Barry A. Schwartz
Male

John C. Stires
Male

Board of Education At Large
Vote for 1
Non-Partisan Contest
Candidates in this contest may or may not be affiliated with any political party

Richard Bewley, Jr.

Alexis Capes

Jay Kenty

Kent Laing

End of Ballot



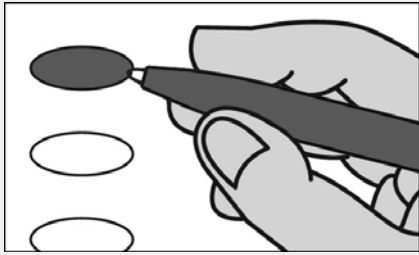
Official Ballot
Gubernatorial Primary Election
July 19, 2022

BS DEM 5
004-002

State of Maryland, Queen Anne's County
Democratic Ballot

Instructions

Making Selections



Fill in the oval to the left of the name of your choice. You must blacken the oval completely, and do not make any marks outside of the oval. You do not have to vote in every race.



Do not cross out or erase, or your vote may not count. If you make a mistake or a stray mark, you may ask for a new ballot.

Governor / Lt. Governor
Vote for 1

- Rushern L. Baker, III
and
Nancy Navarro
- Jon Baron
and
Natalie Williams
- Peter Franchot
and
Monique Anderson-Walker
- Douglas F. Gansler
and
Candace Hollingsworth
- Ralph W. Jaffe
and
Mark Greben
- Ashwani Jain
and
LaTrece Hawkins Lytes
- John King
and
Michelle Daugherty Siri
- Wes Moore
and
Aruna Miller
- Tom Perez
and
Shannon Sneed
- Jerome M. Segal
and
Justinian M. Dispenza

Comptroller
Vote for 1

- Timothy J. Adams
- Brooke Elizabeth Lierman

Attorney General
Vote for 1

- Anthony G. Brown
- Katie Curran O'Malley

U.S. Senator
Vote for 1

- Michelle L. Smith
- Chris Van Hollen

Representative in Congress
District 1
Vote for 1

- R. David Harden
- Heather R. Mizeur

County Commissioner At
Large
Vote for 1

- Merle Joy Schwartz
Unopposed

County Commissioner
District 1
Vote for 1

- Marion Grier
Unopposed

County Commissioner
District 2
Vote for 1

- Andrea Alduino
Unopposed

County Commissioner
District 3
Vote for 1

- Lynn M. Mason
Unopposed

County Commissioner
District 4
Vote for 1

- Deborah Krueger
Unopposed

Judge of the Orphans' Court
Vote for up to 3

- John W. Crook
Unopposed
- Ryan E. Holdgreve
Unopposed
- Crystal Woodward
Unopposed

Vote Both Sides



Democratic Central Committee
Vote for up to 10
No more than half of the members can be elected from the same gender.

Frank W. Alduino
Male

Linda Coveleskie
Female

Connie Lee Kratovil-Lavelle
Female

Deborah Krueger
Female

Lynn M. Mason
Female

Elaine F. McNeil
Female

Michael Morgan
Male

Tom Rider
Male

Barry A. Schwartz
Male

John C. Stires
Male

Board of Education At Large
Vote for 1
Non-Partisan Contest
Candidates in this contest may or may not be affiliated with any political party

Richard Bewley, Jr.

Alexis Capes

Jay Kenty

Kent Laing

End of Ballot



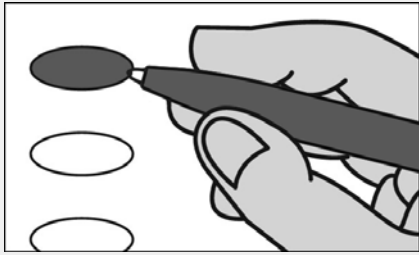
Official Ballot
Gubernatorial Primary Election
July 19, 2022

BS DEM 6
004-003

State of Maryland, Queen Anne's County
Democratic Ballot

Instructions

Making Selections



Fill in the oval to the left of the name of your choice. You must blacken the oval completely, and do not make any marks outside of the oval. You do not have to vote in every race.



Do not cross out or erase, or your vote may not count. If you make a mistake or a stray mark, you may ask for a new ballot.

Governor / Lt. Governor
Vote for 1

- Rushern L. Baker, III
and
Nancy Navarro
- Jon Baron
and
Natalie Williams
- Peter Franchot
and
Monique Anderson-Walker
- Douglas F. Gansler
and
Candace Hollingsworth
- Ralph W. Jaffe
and
Mark Greben
- Ashwani Jain
and
LaTrece Hawkins Lytes
- John King
and
Michelle Daugherty Siri
- Wes Moore
and
Aruna Miller
- Tom Perez
and
Shannon Sneed
- Jerome M. Segal
and
Justinian M. Dispenza

Comptroller
Vote for 1

- Timothy J. Adams
- Brooke Elizabeth Lierman

Attorney General
Vote for 1

- Anthony G. Brown
- Katie Curran O'Malley

U.S. Senator
Vote for 1

- Michelle L. Smith
- Chris Van Hollen

Representative in Congress
District 1
Vote for 1

- R. David Harden
- Heather R. Mizeur

County Commissioner At
Large
Vote for 1

- Merle Joy Schwartz
Unopposed

County Commissioner
District 1
Vote for 1

- Marion Grier
Unopposed

County Commissioner
District 2
Vote for 1

- Andrea Alduino
Unopposed

County Commissioner
District 3
Vote for 1

- Lynn M. Mason
Unopposed

County Commissioner
District 4
Vote for 1

- Deborah Krueger
Unopposed

Judge of the Orphans' Court
Vote for up to 3

- John W. Crook
Unopposed
- Ryan E. Holdgreve
Unopposed
- Crystal Woodward
Unopposed

Vote Both Sides



Democratic Central Committee
Vote for up to 10
No more than half of the members can be elected from the same gender.

Frank W. Alduino
Male

Linda Coveleskie
Female

Connie Lee Kratovil-Lavelle
Female

Deborah Krueger
Female

Lynn M. Mason
Female

Elaine F. McNeil
Female

Michael Morgan
Male

Tom Rider
Male

Barry A. Schwartz
Male

John C. Stires
Male

Board of Education At Large
Vote for 1
Non-Partisan Contest
Candidates in this contest may or may not be affiliated with any political party

Richard Bewley, Jr.

Alexis Capes

Jay Kenty

Kent Laing

End of Ballot



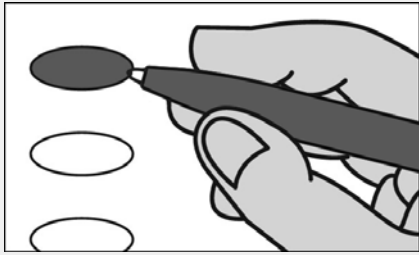
**Official Ballot
Gubernatorial Primary Election
July 19, 2022**

**BS DEM 7
004-006**

**State of Maryland, Queen Anne's County
Democratic Ballot**

Instructions

Making Selections



Fill in the oval to the left of the name of your choice. You must blacken the oval completely, and do not make any marks outside of the oval. You do not have to vote in every race.



Do not cross out or erase, or your vote may not count. If you make a mistake or a stray mark, you may ask for a new ballot.

**Governor / Lt. Governor
Vote for 1**

- Rushern L. Baker, III
and
Nancy Navarro
- Jon Baron
and
Natalie Williams
- Peter Franchot
and
Monique Anderson-Walker
- Douglas F. Gansler
and
Candace Hollingsworth
- Ralph W. Jaffe
and
Mark Greben
- Ashwani Jain
and
LaTrece Hawkins Lytes
- John King
and
Michelle Daugherty Siri
- Wes Moore
and
Aruna Miller
- Tom Perez
and
Shannon Sneed
- Jerome M. Segal
and
Justinian M. Dispenza

**Comptroller
Vote for 1**

- Timothy J. Adams
- Brooke Elizabeth Lierman

**Attorney General
Vote for 1**

- Anthony G. Brown
- Katie Curran O'Malley

**U.S. Senator
Vote for 1**

- Michelle L. Smith
- Chris Van Hollen

**Representative in Congress
District 1
Vote for 1**

- R. David Harden
- Heather R. Mizeur

**County Commissioner At Large
Vote for 1**

- Merle Joy Schwartz
Unopposed

**County Commissioner
District 1
Vote for 1**

- Marion Grier
Unopposed

**County Commissioner
District 2
Vote for 1**

- Andrea Alduino
Unopposed

**County Commissioner
District 3
Vote for 1**

- Lynn M. Mason
Unopposed

**County Commissioner
District 4
Vote for 1**

- Deborah Krueger
Unopposed

**Judge of the Orphans' Court
Vote for up to 3**

- John W. Crook
Unopposed
- Ryan E. Holdgreve
Unopposed
- Crystal Woodward
Unopposed

Vote Both Sides



Democratic Central Committee
Vote for up to 10
No more than half of the members can be elected from the same gender.

Frank W. Alduino
Male

Linda Coveleskie
Female

Connie Lee Kratovil-Lavelle
Female

Deborah Krueger
Female

Lynn M. Mason
Female

Elaine F. McNeil
Female

Michael Morgan
Male

Tom Rider
Male

Barry A. Schwartz
Male

John C. Stires
Male

Board of Education At Large
Vote for 1
Non-Partisan Contest
Candidates in this contest may or may not be affiliated with any political party

Richard Bewley, Jr.

Alexis Capes

Jay Kenty

Kent Laing

End of Ballot



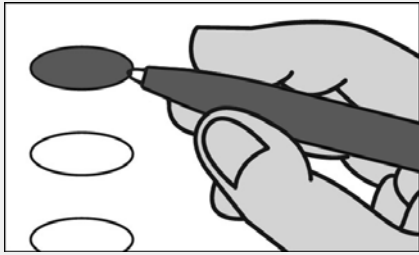
Official Ballot
Gubernatorial Primary Election
July 19, 2022

BS DEM 8
005-001

State of Maryland, Queen Anne's County
Democratic Ballot

Instructions

Making Selections



Fill in the oval to the left of the name of your choice. You must blacken the oval completely, and do not make any marks outside of the oval. You do not have to vote in every race.



Do not cross out or erase, or your vote may not count. If you make a mistake or a stray mark, you may ask for a new ballot.

Governor / Lt. Governor
Vote for 1

- Rushern L. Baker, III
and
Nancy Navarro
- Jon Baron
and
Natalie Williams
- Peter Franchot
and
Monique Anderson-Walker
- Douglas F. Gansler
and
Candace Hollingsworth
- Ralph W. Jaffe
and
Mark Greben
- Ashwani Jain
and
LaTrece Hawkins Lytes
- John King
and
Michelle Daugherty Siri
- Wes Moore
and
Aruna Miller
- Tom Perez
and
Shannon Sneed
- Jerome M. Segal
and
Justinian M. Dispenza

Comptroller
Vote for 1

- Timothy J. Adams
- Brooke Elizabeth Lierman

Attorney General
Vote for 1

- Anthony G. Brown
- Katie Curran O'Malley

U.S. Senator
Vote for 1

- Michelle L. Smith
- Chris Van Hollen

Representative in Congress
District 1
Vote for 1

- R. David Harden
- Heather R. Mizeur

County Commissioner At
Large
Vote for 1

- Merle Joy Schwartz
Unopposed

County Commissioner
District 1
Vote for 1

- Marion Grier
Unopposed

County Commissioner
District 2
Vote for 1

- Andrea Alduino
Unopposed

County Commissioner
District 3
Vote for 1

- Lynn M. Mason
Unopposed

County Commissioner
District 4
Vote for 1

- Deborah Krueger
Unopposed

Judge of the Orphans' Court
Vote for up to 3

- John W. Crook
Unopposed
- Ryan E. Holdgreve
Unopposed
- Crystal Woodward
Unopposed

Vote Both Sides



Democratic Central Committee
Vote for up to 10
No more than half of the members can be elected from the same gender.

Frank W. Alduino
Male

Linda Coveleskie
Female

Connie Lee Kratovil-Lavelle
Female

Deborah Krueger
Female

Lynn M. Mason
Female

Elaine F. McNeil
Female

Michael Morgan
Male

Tom Rider
Male

Barry A. Schwartz
Male

John C. Stires
Male

Board of Education At Large
Vote for 1
Non-Partisan Contest
Candidates in this contest may or may not be affiliated with any political party

Richard Bewley, Jr.

Alexis Capes

Jay Kenty

Kent Laing

End of Ballot



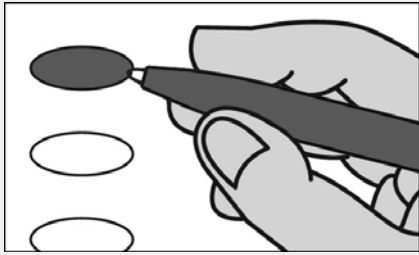
Official Ballot
Gubernatorial Primary Election
July 19, 2022

BS DEM 9
005-002

State of Maryland, Queen Anne's County
Democratic Ballot

Instructions

Making Selections



Fill in the oval to the left of the name of your choice. You must blacken the oval completely, and do not make any marks outside of the oval. You do not have to vote in every race.



Do not cross out or erase, or your vote may not count. If you make a mistake or a stray mark, you may ask for a new ballot.

Governor / Lt. Governor
Vote for 1

- Rushern L. Baker, III
and
Nancy Navarro
- Jon Baron
and
Natalie Williams
- Peter Franchot
and
Monique Anderson-Walker
- Douglas F. Gansler
and
Candace Hollingsworth
- Ralph W. Jaffe
and
Mark Greben
- Ashwani Jain
and
LaTrece Hawkins Lytes
- John King
and
Michelle Daugherty Siri
- Wes Moore
and
Aruna Miller
- Tom Perez
and
Shannon Sneed
- Jerome M. Segal
and
Justinian M. Dispenza

Comptroller
Vote for 1

- Timothy J. Adams
- Brooke Elizabeth Lierman

Attorney General
Vote for 1

- Anthony G. Brown
- Katie Curran O'Malley

U.S. Senator
Vote for 1

- Michelle L. Smith
- Chris Van Hollen

Representative in Congress
District 1
Vote for 1

- R. David Harden
- Heather R. Mizeur

County Commissioner At
Large
Vote for 1

- Merle Joy Schwartz
Unopposed

County Commissioner
District 1
Vote for 1

- Marion Grier
Unopposed

County Commissioner
District 2
Vote for 1

- Andrea Alduino
Unopposed

County Commissioner
District 3
Vote for 1

- Lynn M. Mason
Unopposed

County Commissioner
District 4
Vote for 1

- Deborah Krueger
Unopposed

Judge of the Orphans' Court
Vote for up to 3

- John W. Crook
Unopposed
- Ryan E. Holdgreve
Unopposed
- Crystal Woodward
Unopposed

Vote Both Sides



Democratic Central Committee
Vote for up to 10
No more than half of the members can be elected from the same gender.

Frank W. Alduino
Male

Linda Coveleskie
Female

Connie Lee Kratovil-Lavelle
Female

Deborah Krueger
Female

Lynn M. Mason
Female

Elaine F. McNeil
Female

Michael Morgan
Male

Tom Rider
Male

Barry A. Schwartz
Male

John C. Stires
Male

Board of Education At Large
Vote for 1
Non-Partisan Contest
Candidates in this contest may or may not be affiliated with any political party

Richard Bewley, Jr.

Alexis Capes

Jay Kenty

Kent Laing

End of Ballot



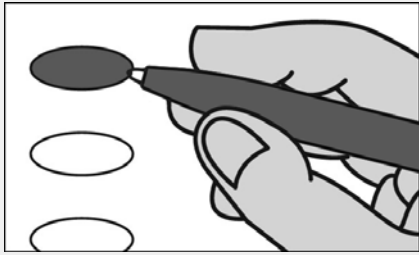
Official Ballot
Gubernatorial Primary Election
July 19, 2022

BS DEM 10
006-001

State of Maryland, Queen Anne's County
Democratic Ballot

Instructions

Making Selections



Fill in the oval to the left of the name of your choice. You must blacken the oval completely, and do not make any marks outside of the oval. You do not have to vote in every race.



Do not cross out or erase, or your vote may not count. If you make a mistake or a stray mark, you may ask for a new ballot.

Governor / Lt. Governor
Vote for 1

- Rushern L. Baker, III
and
Nancy Navarro
- Jon Baron
and
Natalie Williams
- Peter Franchot
and
Monique Anderson-Walker
- Douglas F. Gansler
and
Candace Hollingsworth
- Ralph W. Jaffe
and
Mark Greben
- Ashwani Jain
and
LaTrece Hawkins Lytes
- John King
and
Michelle Daugherty Siri
- Wes Moore
and
Aruna Miller
- Tom Perez
and
Shannon Sneed
- Jerome M. Segal
and
Justinian M. Dispenza

Comptroller
Vote for 1

- Timothy J. Adams
- Brooke Elizabeth Lierman

Attorney General
Vote for 1

- Anthony G. Brown
- Katie Curran O'Malley

U.S. Senator
Vote for 1

- Michelle L. Smith
- Chris Van Hollen

Representative in Congress
District 1
Vote for 1

- R. David Harden
- Heather R. Mizeur

County Commissioner At
Large
Vote for 1

- Merle Joy Schwartz
Unopposed

County Commissioner
District 1
Vote for 1

- Marion Grier
Unopposed

County Commissioner
District 2
Vote for 1

- Andrea Alduino
Unopposed

County Commissioner
District 3
Vote for 1

- Lynn M. Mason
Unopposed

County Commissioner
District 4
Vote for 1

- Deborah Krueger
Unopposed

Judge of the Orphans' Court
Vote for up to 3

- John W. Crook
Unopposed
- Ryan E. Holdgreve
Unopposed
- Crystal Woodward
Unopposed

Vote Both Sides



Democratic Central Committee
Vote for up to 10
No more than half of the members can be elected from the same gender.

Frank W. Alduino
Male

Linda Coveleskie
Female

Connie Lee Kratovil-Lavelle
Female

Deborah Krueger
Female

Lynn M. Mason
Female

Elaine F. McNeil
Female

Michael Morgan
Male

Tom Rider
Male

Barry A. Schwartz
Male

John C. Stires
Male

Board of Education At Large
Vote for 1
Non-Partisan Contest
Candidates in this contest may or may not be affiliated with any political party

Richard Bewley, Jr.

Alexis Capes

Jay Kenty

Kent Laing

End of Ballot



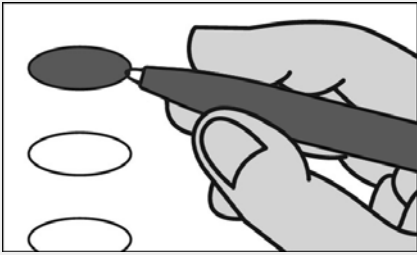
Official Ballot
Gubernatorial Primary Election
July 19, 2022

BS DEM 11
007-001

State of Maryland, Queen Anne's County
Democratic Ballot

Instructions

Making Selections



Fill in the oval to the left of the name of your choice. You must blacken the oval completely, and do not make any marks outside of the oval. You do not have to vote in every race.



Do not cross out or erase, or your vote may not count. If you make a mistake or a stray mark, you may ask for a new ballot.

Governor / Lt. Governor
Vote for 1

- Rushern L. Baker, III
and
Nancy Navarro
- Jon Baron
and
Natalie Williams
- Peter Franchot
and
Monique Anderson-Walker
- Douglas F. Gansler
and
Candace Hollingsworth
- Ralph W. Jaffe
and
Mark Greben
- Ashwani Jain
and
LaTrece Hawkins Lytes
- John King
and
Michelle Daugherty Siri
- Wes Moore
and
Aruna Miller
- Tom Perez
and
Shannon Sneed
- Jerome M. Segal
and
Justinian M. Dispenza

Comptroller
Vote for 1

- Timothy J. Adams
- Brooke Elizabeth Lierman

Attorney General
Vote for 1

- Anthony G. Brown
- Katie Curran O'Malley

U.S. Senator
Vote for 1

- Michelle L. Smith
- Chris Van Hollen

Representative in Congress
District 1
Vote for 1

- R. David Harden
- Heather R. Mizeur

County Commissioner At
Large
Vote for 1

- Merle Joy Schwartz
Unopposed

County Commissioner
District 1
Vote for 1

- Marion Grier
Unopposed

County Commissioner
District 2
Vote for 1

- Andrea Alduino
Unopposed

County Commissioner
District 3
Vote for 1

- Lynn M. Mason
Unopposed

County Commissioner
District 4
Vote for 1

- Deborah Krueger
Unopposed

Judge of the Orphans' Court
Vote for up to 3

- John W. Crook
Unopposed
- Ryan E. Holdgreve
Unopposed
- Crystal Woodward
Unopposed

Vote Both Sides



Democratic Central Committee
Vote for up to 10
No more than half of the members can be elected from the same gender.

Frank W. Alduino
Male

Linda Coveleskie
Female

Connie Lee Kratovil-Lavelle
Female

Deborah Krueger
Female

Lynn M. Mason
Female

Elaine F. McNeil
Female

Michael Morgan
Male

Tom Rider
Male

Barry A. Schwartz
Male

John C. Stires
Male

Board of Education At Large
Vote for 1
Non-Partisan Contest
Candidates in this contest may or may not be affiliated with any political party

Richard Bewley, Jr.

Alexis Capes

Jay Kenty

Kent Laing

End of Ballot



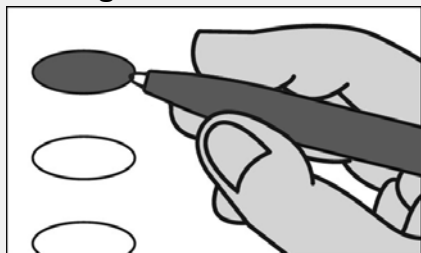
Official Ballot
Gubernatorial Primary Election
July 19, 2022

BS NON 1
001-001

State of Maryland, Queen Anne's County
Non-Partisan Ballot

Instructions

Making Selections



Fill in the oval to the left of the name of your choice. You must blacken the oval completely, and do not make any marks outside of the oval. You do not have to vote in every race.



Do not cross out or erase, or your vote may not count. If you make a mistake or a stray mark, you may ask for a new ballot.

**Board of Education At Large
Vote for 1**

Non-Partisan Contest

Candidates in this contest may or may not be affiliated with any political party

- Richard Bewley, Jr.**
- Alexis Capes**
- Jay Kenty**
- Kent Laing**

End of Ballot





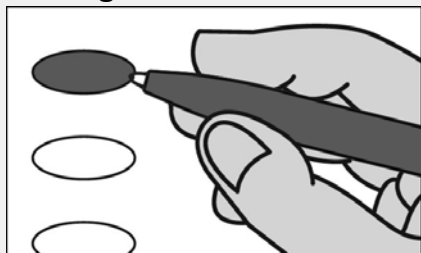
Official Ballot
Gubernatorial Primary Election
July 19, 2022

BS NON 2
002-001

State of Maryland, Queen Anne's County
Non-Partisan Ballot

Instructions

Making Selections



Fill in the oval to the left of the name of your choice. You must blacken the oval completely, and do not make any marks outside of the oval. You do not have to vote in every race.



Do not cross out or erase, or your vote may not count. If you make a mistake or a stray mark, you may ask for a new ballot.

**Board of Education At Large
Vote for 1**

Non-Partisan Contest

Candidates in this contest may or may not be affiliated with any political party

- Richard Bewley, Jr.**
- Alexis Capes**
- Jay Kenty**
- Kent Laing**

End of Ballot





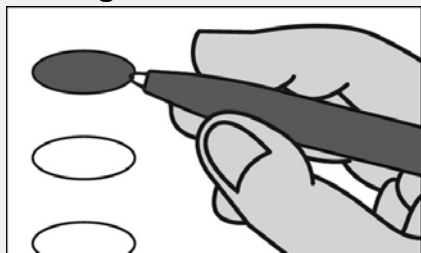
Official Ballot
Gubernatorial Primary Election
July 19, 2022

BS NON 3
003-002

State of Maryland, Queen Anne's County
Non-Partisan Ballot

Instructions

Making Selections



Fill in the oval to the left of the name of your choice. You must blacken the oval completely, and do not make any marks outside of the oval. You do not have to vote in every race.



Do not cross out or erase, or your vote may not count. If you make a mistake or a stray mark, you may ask for a new ballot.

**Board of Education At Large
Vote for 1**

Non-Partisan Contest

Candidates in this contest may or may not be affiliated with any political party

- Richard Bewley, Jr.**
- Alexis Capes**
- Jay Kenty**
- Kent Laing**

End of Ballot





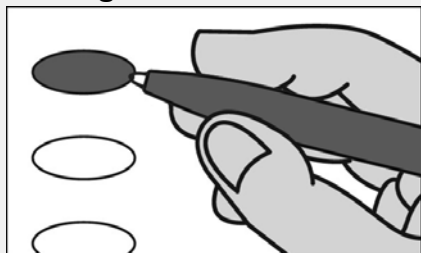
Official Ballot
Gubernatorial Primary Election
July 19, 2022

BS NON 4
004-001

State of Maryland, Queen Anne's County
Non-Partisan Ballot

Instructions

Making Selections



Fill in the oval to the left of the name of your choice. You must blacken the oval completely, and do not make any marks outside of the oval. You do not have to vote in every race.



Do not cross out or erase, or your vote may not count. If you make a mistake or a stray mark, you may ask for a new ballot.

**Board of Education At Large
Vote for 1**

Non-Partisan Contest

Candidates in this contest may or may not be affiliated with any political party

- Richard Bewley, Jr.**
- Alexis Capes**
- Jay Kenty**
- Kent Laing**

End of Ballot





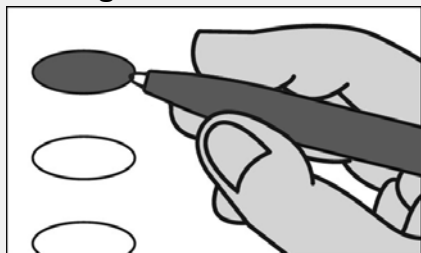
Official Ballot
Gubernatorial Primary Election
July 19, 2022

BS NON 5
004-002

State of Maryland, Queen Anne's County
Non-Partisan Ballot

Instructions

Making Selections



Fill in the oval to the left of the name of your choice. You must blacken the oval completely, and do not make any marks outside of the oval. You do not have to vote in every race.



Do not cross out or erase, or your vote may not count. If you make a mistake or a stray mark, you may ask for a new ballot.

**Board of Education At Large
Vote for 1**

Non-Partisan Contest

Candidates in this contest may or may not be affiliated with any political party

- Richard Bewley, Jr.**
- Alexis Capes**
- Jay Kenty**
- Kent Laing**

End of Ballot





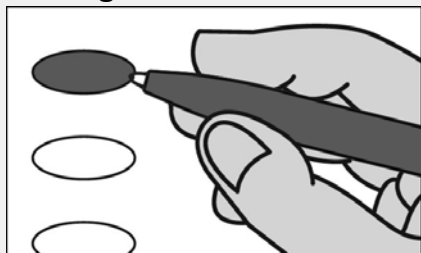
Official Ballot
Gubernatorial Primary Election
July 19, 2022

BS NON 6
004-003

State of Maryland, Queen Anne's County
Non-Partisan Ballot

Instructions

Making Selections



Fill in the oval to the left of the name of your choice. You must blacken the oval completely, and do not make any marks outside of the oval. You do not have to vote in every race.



Do not cross out or erase, or your vote may not count. If you make a mistake or a stray mark, you may ask for a new ballot.

**Board of Education At Large
Vote for 1**

Non-Partisan Contest

Candidates in this contest may or may not be affiliated with any political party

- Richard Bewley, Jr.**
- Alexis Capes**
- Jay Kenty**
- Kent Laing**

End of Ballot





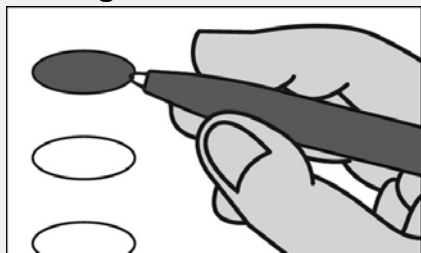
Official Ballot
Gubernatorial Primary Election
July 19, 2022

BS NON 7
004-006

State of Maryland, Queen Anne's County
Non-Partisan Ballot

Instructions

Making Selections



Fill in the oval to the left of the name of your choice. You must blacken the oval completely, and do not make any marks outside of the oval. You do not have to vote in every race.



Do not cross out or erase, or your vote may not count. If you make a mistake or a stray mark, you may ask for a new ballot.

**Board of Education At Large
Vote for 1**

Non-Partisan Contest

Candidates in this contest may or may not be affiliated with any political party

- Richard Bewley, Jr.**
- Alexis Capes**
- Jay Kenty**
- Kent Laing**

End of Ballot





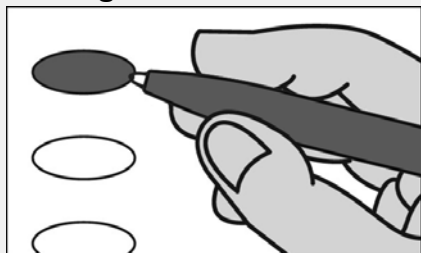
Official Ballot
Gubernatorial Primary Election
July 19, 2022

BS NON 8
005-001

State of Maryland, Queen Anne's County
Non-Partisan Ballot

Instructions

Making Selections



Fill in the oval to the left of the name of your choice. You must blacken the oval completely, and do not make any marks outside of the oval. You do not have to vote in every race.



Do not cross out or erase, or your vote may not count. If you make a mistake or a stray mark, you may ask for a new ballot.

**Board of Education At Large
Vote for 1**

Non-Partisan Contest

Candidates in this contest may or may not be affiliated with any political party

- Richard Bewley, Jr.**
- Alexis Capes**
- Jay Kenty**
- Kent Laing**

End of Ballot





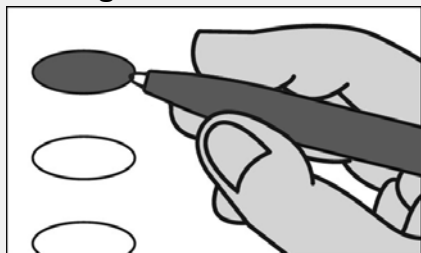
Official Ballot
Gubernatorial Primary Election
July 19, 2022

BS NON 9
005-002

State of Maryland, Queen Anne's County
Non-Partisan Ballot

Instructions

Making Selections



Fill in the oval to the left of the name of your choice. You must blacken the oval completely, and do not make any marks outside of the oval. You do not have to vote in every race.



Do not cross out or erase, or your vote may not count. If you make a mistake or a stray mark, you may ask for a new ballot.

**Board of Education At Large
Vote for 1**

Non-Partisan Contest

Candidates in this contest may or may not be affiliated with any political party

- Richard Bewley, Jr.**
- Alexis Capes**
- Jay Kenty**
- Kent Laing**

End of Ballot





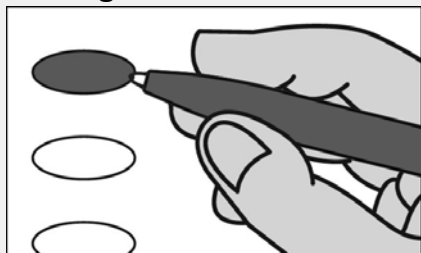
Official Ballot
Gubernatorial Primary Election
July 19, 2022

BS NON 10
006-001

State of Maryland, Queen Anne's County
Non-Partisan Ballot

Instructions

Making Selections



Fill in the oval to the left of the name of your choice. You must blacken the oval completely, and do not make any marks outside of the oval. You do not have to vote in every race.



Do not cross out or erase, or your vote may not count. If you make a mistake or a stray mark, you may ask for a new ballot.

**Board of Education At Large
Vote for 1**

Non-Partisan Contest

Candidates in this contest may or may not be affiliated with any political party

- Richard Bewley, Jr.**
- Alexis Capes**
- Jay Kenty**
- Kent Laing**

End of Ballot





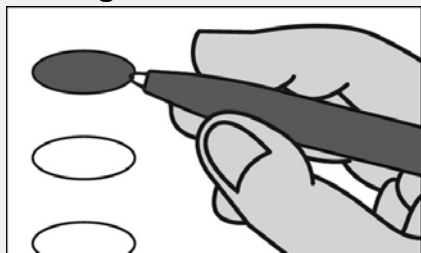
Official Ballot
Gubernatorial Primary Election
July 19, 2022

BS NON 11
007-001

State of Maryland, Queen Anne's County
Non-Partisan Ballot

Instructions

Making Selections



Fill in the oval to the left of the name of your choice. You must blacken the oval completely, and do not make any marks outside of the oval. You do not have to vote in every race.



Do not cross out or erase, or your vote may not count. If you make a mistake or a stray mark, you may ask for a new ballot.

**Board of Education At Large
Vote for 1**

Non-Partisan Contest

Candidates in this contest may or may not be affiliated with any political party

- Richard Bewley, Jr.**
- Alexis Capes**
- Jay Kenty**
- Kent Laing**

End of Ballot



