

Official Ballot  
2018 Gubernatorial Primary Election  
June 26, 2018

BS REP 1

State of Maryland, Somerset County  
Republican Ballot

Instructions

Making Selections



Fill in the oval to the left of the name of your choice. You must blacken the oval completely, and do not make any marks outside of the oval. You do not have to vote in every race.



Do not cross out or erase, or your vote may not count. If you make a mistake or a stray mark, you may ask for a new ballot.

Governor / Lt. Governor  
Vote for 1

- Larry Hogan and Boyd K. Rutherford Unopposed

Comptroller  
Vote for 1

- Anjali Reed Phukan Unopposed

Attorney General  
Vote for 1

- Craig Wolf Unopposed

U.S. Senator  
Vote for 1

- Tony Campbell
- Chris Chaffee
- Evan M. Cronhardt
- Nnabu Eze
- John R. Graziani
- Christina J. Grigorian
- Albert Binyahmin Howard
- Bill Krehnbrink
- Gerald I. Smith, Jr.
- Blaine Taylor
- Brian Charles Vaeth

Representative in Congress  
District 1

Vote for 1

- Martin Elborn
- Andy Harris
- Lamont Taylor

State Senator  
District 38

Vote for 1

- Mary Beth Carozza Unopposed

House of Delegates  
District 38A

Vote for 1

- Charles James Otto Unopposed

County Commissioner  
District 2

Vote for 1

- Charles Fisher Unopposed

Vote Both Sides



**Judge of the Circuit Court  
Circuit 1**  
**Vote for 1**

**Daniel William Powell**  
Unopposed

**State's Attorney**  
**Vote for 1**

**Wess Garner**  
Unopposed

**Clerk of the Circuit Court**  
**Vote for 1**

**Charles T. Horner**

**Jordan Monk**

**Register of Wills**  
**Vote for 1**

**Keith B. Ward**  
Unopposed

**Judge of the Orphans' Court**  
**Vote for up to 3**

**Kathleen Crossan**  
Unopposed

**Libby Hall**  
Unopposed

**Bob McCready**  
Unopposed

**Republican Central  
Committee**  
**Vote for up to 9**

**Matt Adams**  
Unopposed

**Stephen G. Frey**  
Unopposed

**Bella Hambrick**  
Unopposed

**David B. Lloyd**  
Unopposed

**Matthew C. Powell**  
Unopposed

**Suzanne Tawes Smith**  
Unopposed

**Tammy Chaffey Truitt**  
Unopposed

**Nomination Vacant**

**Nomination Vacant**

**End of Ballot** 

Official Ballot  
2018 Gubernatorial Primary Election  
June 26, 2018

BS REP 2

State of Maryland, Somerset County  
Republican Ballot

Instructions

Making Selections



Fill in the oval to the left of the name of your choice. You must blacken the oval completely, and do not make any marks outside of the oval. You do not have to vote in every race.



Do not cross out or erase, or your vote may not count. If you make a mistake or a stray mark, you may ask for a new ballot.

Governor / Lt. Governor  
Vote for 1

- Larry Hogan and Boyd K. Rutherford  
Unopposed

Comptroller  
Vote for 1

- Anjali Reed Phukan  
Unopposed

Attorney General  
Vote for 1

- Craig Wolf  
Unopposed

U.S. Senator  
Vote for 1

- Tony Campbell
- Chris Chaffee
- Evan M. Cronhardt
- Nnabu Eze
- John R. Graziani
- Christina J. Grigorian
- Albert Binyahmin Howard
- Bill Krehnbrink
- Gerald I. Smith, Jr.
- Blaine Taylor
- Brian Charles Vaeth

Representative in Congress  
District 1

Vote for 1

- Martin Elborn
- Andy Harris
- Lamont Taylor

State Senator  
District 38

Vote for 1

- Mary Beth Carozza  
Unopposed

House of Delegates  
District 38A

Vote for 1

- Charles James Otto  
Unopposed

County Commissioner  
District 3

Vote for 1

- Eldon Willing  
Unopposed

Vote Both Sides



**Judge of the Circuit Court  
Circuit 1**  
Vote for 1

**Daniel William Powell**  
Unopposed

**State's Attorney**  
Vote for 1

**Wess Garner**  
Unopposed

**Clerk of the Circuit Court**  
Vote for 1

**Charles T. Horner**

**Jordan Monk**

**Register of Wills**  
Vote for 1

**Keith B. Ward**  
Unopposed

**Judge of the Orphans' Court**  
Vote for up to 3

**Kathleen Crossan**  
Unopposed

**Libby Hall**  
Unopposed

**Bob McCready**  
Unopposed

**Republican Central  
Committee**  
Vote for up to 9

**Matt Adams**  
Unopposed

**Stephen G. Frey**  
Unopposed

**Bella Hambrick**  
Unopposed

**David B. Lloyd**  
Unopposed

**Matthew C. Powell**  
Unopposed

**Suzanne Tawes Smith**  
Unopposed

**Tammy Chaffey Truitt**  
Unopposed

**Nomination Vacant**

**Nomination Vacant**

**End of Ballot** 

Official Ballot  
2018 Gubernatorial Primary Election  
June 26, 2018

BS REP 3

State of Maryland, Somerset County  
Republican Ballot

Instructions

Making Selections



Fill in the oval to the left of the name of your choice. You must blacken the oval completely, and do not make any marks outside of the oval. You do not have to vote in every race.



Do not cross out or erase, or your vote may not count. If you make a mistake or a stray mark, you may ask for a new ballot.

Governor / Lt. Governor  
Vote for 1

- Larry Hogan and Boyd K. Rutherford Unopposed

Comptroller  
Vote for 1

- Anjali Reed Phukan Unopposed

Attorney General  
Vote for 1

- Craig Wolf Unopposed

U.S. Senator  
Vote for 1

- Tony Campbell
- Chris Chaffee
- Evan M. Cronhardt
- Nnabu Eze
- John R. Graziani
- Christina J. Grigorian
- Albert Binyahmin Howard
- Bill Krehnbrink
- Gerald I. Smith, Jr.
- Blaine Taylor
- Brian Charles Vaeth

Representative in Congress  
District 1

Vote for 1

- Martin Elborn
- Andy Harris
- Lamont Taylor

State Senator  
District 38

Vote for 1

- Mary Beth Carozza Unopposed

House of Delegates  
District 38A

Vote for 1

- Charles James Otto Unopposed

Judge of the Circuit Court  
Circuit 1

Vote for 1

- Daniel William Powell Unopposed

State's Attorney  
Vote for 1

- Wess Garner Unopposed

Vote Both Sides





<b>Clerk of the Circuit Court</b> <b>Vote for 1</b>
<input type="radio"/> <b>Charles T. Horner</b>
<input type="radio"/> <b>Jordan Monk</b>

<b>Register of Wills</b> <b>Vote for 1</b>
<input type="radio"/> <b>Keith B. Ward</b> Unopposed

<b>Judge of the Orphans' Court</b> <b>Vote for up to 3</b>
<input type="radio"/> <b>Kathleen Crossan</b> Unopposed
<input type="radio"/> <b>Libby Hall</b> Unopposed
<input type="radio"/> <b>Bob McCready</b> Unopposed

<b>Republican Central Committee</b> <b>Vote for up to 9</b>
<input type="radio"/> <b>Matt Adams</b> Unopposed
<input type="radio"/> <b>Stephen G. Frey</b> Unopposed
<input type="radio"/> <b>Bella Hambrick</b> Unopposed
<input type="radio"/> <b>David B. Lloyd</b> Unopposed
<input type="radio"/> <b>Matthew C. Powell</b> Unopposed
<input type="radio"/> <b>Suzanne Tawes Smith</b> Unopposed
<input type="radio"/> <b>Tammy Chaffey Truitt</b> Unopposed
<b>Nomination Vacant</b>
<b>Nomination Vacant</b>

PROOF

<b>End of Ballot</b> 
---



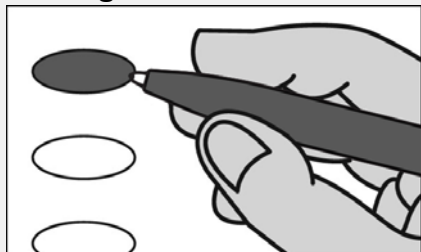
Official Ballot  
2018 Gubernatorial Primary Election  
June 26, 2018

BS REP 4

State of Maryland, Somerset County  
Republican Ballot

Instructions

Making Selections



Fill in the oval to the left of the name of your choice. You must blacken the oval completely, and do not make any marks outside of the oval. You do not have to vote in every race.



Do not cross out or erase, or your vote may not count. If you make a mistake or a stray mark, you may ask for a new ballot.

Governor / Lt. Governor  
Vote for 1

- Larry Hogan and Boyd K. Rutherford  
Unopposed

Comptroller  
Vote for 1

- Anjali Reed Phukan  
Unopposed

Attorney General  
Vote for 1

- Craig Wolf  
Unopposed

U.S. Senator  
Vote for 1

- Tony Campbell
- Chris Chaffee
- Evan M. Cronhardt
- Nnabu Eze
- John R. Graziani
- Christina J. Grigorian
- Albert Binyahmin Howard
- Bill Krehnbrink
- Gerald I. Smith, Jr.
- Blaine Taylor
- Brian Charles Vaeth

Representative in Congress  
District 1

Vote for 1

- Martin Elborn
- Andy Harris
- Lamont Taylor

State Senator  
District 38

Vote for 1

- Mary Beth Carozza  
Unopposed

House of Delegates  
District 38A

Vote for 1

- Charles James Otto  
Unopposed

County Commissioner  
District 4

Vote for 1

- Eddie Brimer
- Charles Laird

Vote Both Sides



**Judge of the Circuit Court  
Circuit 1**  
Vote for 1

**Daniel William Powell**  
Unopposed

**State's Attorney**  
Vote for 1

**Wess Garner**  
Unopposed

**Clerk of the Circuit Court**  
Vote for 1

**Charles T. Horner**

**Jordan Monk**

**Register of Wills**  
Vote for 1

**Keith B. Ward**  
Unopposed

**Judge of the Orphans' Court**  
Vote for up to 3

**Kathleen Crossan**  
Unopposed

**Libby Hall**  
Unopposed

**Bob McCready**  
Unopposed

**Republican Central  
Committee**  
Vote for up to 9

**Matt Adams**  
Unopposed

**Stephen G. Frey**  
Unopposed

**Bella Hambrick**  
Unopposed

**David B. Lloyd**  
Unopposed


**Matthew C. Powell**  
Unopposed

**Suzanne Tawes Smith**  
Unopposed

**Tammy Chaffey Truitt**  
Unopposed

**Nomination Vacant**

**Nomination Vacant**

**End of Ballot** 



Official Ballot  
2018 Gubernatorial Primary Election  
June 26, 2018

BS REP 5

State of Maryland, Somerset County  
Republican Ballot

Instructions

Making Selections



Fill in the oval to the left of the name of your choice. You must blacken the oval completely, and do not make any marks outside of the oval. You do not have to vote in every race.



Do not cross out or erase, or your vote may not count. If you make a mistake or a stray mark, you may ask for a new ballot.

Governor / Lt. Governor  
Vote for 1

- Larry Hogan and Boyd K. Rutherford Unopposed

Comptroller  
Vote for 1

- Anjali Reed Phukan Unopposed

Attorney General  
Vote for 1

- Craig Wolf Unopposed

U.S. Senator  
Vote for 1

- Tony Campbell
- Chris Chaffee
- Evan M. Cronhardt
- Nnabu Eze
- John R. Graziani
- Christina J. Grigorian
- Albert Binyahmin Howard
- Bill Krehnbrink
- Gerald I. Smith, Jr.
- Blaine Taylor
- Brian Charles Vaeth

Representative in Congress  
District 1

Vote for 1

- Martin Elborn
- Andy Harris
- Lamont Taylor

State Senator  
District 38

Vote for 1

- Mary Beth Carozza Unopposed

House of Delegates  
District 38A

Vote for 1

- Charles James Otto Unopposed

County Commissioner  
District 5

Vote for 1

- Mike Corbin Unopposed

Vote Both Sides



**Judge of the Circuit Court  
Circuit 1**  
Vote for 1

**Daniel William Powell**  
Unopposed

**State's Attorney**  
Vote for 1

**Wess Garner**  
Unopposed

**Clerk of the Circuit Court**  
Vote for 1

**Charles T. Horner**

**Jordan Monk**

**Register of Wills**  
Vote for 1

**Keith B. Ward**  
Unopposed

**Judge of the Orphans' Court**  
Vote for up to 3

**Kathleen Crossan**  
Unopposed

**Libby Hall**  
Unopposed

**Bob McCready**  
Unopposed

**Republican Central  
Committee**  
Vote for up to 9

**Matt Adams**  
Unopposed

**Stephen G. Frey**  
Unopposed

**Bella Hambrick**  
Unopposed

**David B. Lloyd**  
Unopposed

**Matthew C. Powell**  
Unopposed

**Suzanne Tawes Smith**  
Unopposed

**Tammy Chaffey Truitt**  
Unopposed

**Nomination Vacant**

**Nomination Vacant**

**End of Ballot** 

Official Ballot  
2018 Gubernatorial Primary Election  
June 26, 2018

BS REP 6

State of Maryland, Somerset County  
Republican Ballot

Instructions

Making Selections



Fill in the oval to the left of the name of your choice. You must blacken the oval completely, and do not make any marks outside of the oval. You do not have to vote in every race.



Do not cross out or erase, or your vote may not count. If you make a mistake or a stray mark, you may ask for a new ballot.

Governor / Lt. Governor  
Vote for 1

- Larry Hogan and Boyd K. Rutherford  
Unopposed

Comptroller  
Vote for 1

- Anjali Reed Phukan  
Unopposed

Attorney General  
Vote for 1

- Craig Wolf  
Unopposed

U.S. Senator  
Vote for 1

- Tony Campbell
- Chris Chaffee
- Evan M. Cronhardt
- Nnabu Eze
- John R. Graziani
- Christina J. Grigorian
- Albert Binyahmin Howard
- Bill Krehnbrink
- Gerald I. Smith, Jr.
- Blaine Taylor
- Brian Charles Vaeth

Representative in Congress  
District 1

Vote for 1

- Martin Elborn
- Andy Harris
- Lamont Taylor

State Senator  
District 38

Vote for 1

- Mary Beth Carozza  
Unopposed

House of Delegates  
District 38A

Vote for 1

- Charles James Otto  
Unopposed

County Commissioner  
District 5

Vote for 1

- Mike Corbin  
Unopposed

Vote Both Sides



**Judge of the Circuit Court  
Circuit 1**  
Vote for 1

**Daniel William Powell**  
Unopposed

**State's Attorney**  
Vote for 1

**Wess Garner**  
Unopposed

**Clerk of the Circuit Court**  
Vote for 1

**Charles T. Horner**

**Jordan Monk**

**Register of Wills**  
Vote for 1

**Keith B. Ward**  
Unopposed

**Judge of the Orphans' Court**  
Vote for up to 3

**Kathleen Crossan**  
Unopposed

**Libby Hall**  
Unopposed

**Bob McCready**  
Unopposed

**Republican Central  
Committee**  
Vote for up to 9

**Matt Adams**  
Unopposed

**Stephen G. Frey**  
Unopposed

**Bella Hambrick**  
Unopposed

**David B. Lloyd**  
Unopposed

**Matthew C. Powell**  
Unopposed

**Suzanne Tawes Smith**  
Unopposed

**Tammy Chaffey Truitt**  
Unopposed

**Nomination Vacant**

**Nomination Vacant**

**End of Ballot** 

Official Ballot  
2018 Gubernatorial Primary Election  
June 26, 2018

BS REP 7

State of Maryland, Somerset County  
Republican Ballot

Instructions

Making Selections



Fill in the oval to the left of the name of your choice. You must blacken the oval completely, and do not make any marks outside of the oval. You do not have to vote in every race.



Do not cross out or erase, or your vote may not count. If you make a mistake or a stray mark, you may ask for a new ballot.

Governor / Lt. Governor  
Vote for 1

- Larry Hogan and Boyd K. Rutherford  
Unopposed

Comptroller  
Vote for 1

- Anjali Reed Phukan  
Unopposed

Attorney General  
Vote for 1

- Craig Wolf  
Unopposed

U.S. Senator  
Vote for 1

- Tony Campbell
- Chris Chaffee
- Evan M. Cronhardt
- Nnabu Eze
- John R. Graziani
- Christina J. Grigorian
- Albert Binyahmin Howard
- Bill Krehnbrink
- Gerald I. Smith, Jr.
- Blaine Taylor
- Brian Charles Vaeth

Representative in Congress  
District 1

Vote for 1

- Martin Elborn
- Andy Harris
- Lamont Taylor

State Senator  
District 38

Vote for 1

- Mary Beth Carozza  
Unopposed

House of Delegates  
District 38A

Vote for 1

- Charles James Otto  
Unopposed

County Commissioner  
District 3

Vote for 1

- Eldon Willing  
Unopposed

Vote Both Sides



**Judge of the Circuit Court  
Circuit 1**  
Vote for 1

**Daniel William Powell**  
Unopposed

**State's Attorney**  
Vote for 1

**Wess Garner**  
Unopposed

**Clerk of the Circuit Court**  
Vote for 1

**Charles T. Horner**

**Jordan Monk**

**Register of Wills**  
Vote for 1

**Keith B. Ward**  
Unopposed

**Judge of the Orphans' Court**  
Vote for up to 3

**Kathleen Crossan**  
Unopposed

**Libby Hall**  
Unopposed

**Bob McCready**  
Unopposed

**Republican Central  
Committee**  
Vote for up to 9

**Matt Adams**  
Unopposed

**Stephen G. Frey**  
Unopposed

**Bella Hambrick**  
Unopposed

**David B. Lloyd**  
Unopposed

**Matthew C. Powell**  
Unopposed

**Suzanne Tawes Smith**  
Unopposed

**Tammy Chaffey Truitt**  
Unopposed

**Nomination Vacant**

**Nomination Vacant**

**End of Ballot** 

Official Ballot  
2018 Gubernatorial Primary Election  
June 26, 2018

BS REP 8

State of Maryland, Somerset County  
Republican Ballot

Instructions

Making Selections



Fill in the oval to the left of the name of your choice. You must blacken the oval completely, and do not make any marks outside of the oval. You do not have to vote in every race.



Do not cross out or erase, or your vote may not count. If you make a mistake or a stray mark, you may ask for a new ballot.

Governor / Lt. Governor  
Vote for 1

- Larry Hogan and Boyd K. Rutherford  
Unopposed

Comptroller  
Vote for 1

- Anjali Reed Phukan  
Unopposed

Attorney General  
Vote for 1

- Craig Wolf  
Unopposed

U.S. Senator  
Vote for 1

- Tony Campbell
- Chris Chaffee
- Evan M. Cronhardt
- Nnabu Eze
- John R. Graziani
- Christina J. Grigorian
- Albert Binyahmin Howard
- Bill Krehnbrink
- Gerald I. Smith, Jr.
- Blaine Taylor
- Brian Charles Vaeth

Representative in Congress  
District 1

Vote for 1

- Martin Elborn
- Andy Harris
- Lamont Taylor

State Senator  
District 38

Vote for 1

- Mary Beth Carozza  
Unopposed

House of Delegates  
District 38A

Vote for 1

- Charles James Otto  
Unopposed

County Commissioner  
District 3

Vote for 1

- Eldon Willing  
Unopposed

Vote Both Sides



**Judge of the Circuit Court  
Circuit 1**  
Vote for 1

**Daniel William Powell**  
Unopposed

**State's Attorney**  
Vote for 1

**Wess Garner**  
Unopposed

**Clerk of the Circuit Court**  
Vote for 1

**Charles T. Horner**

**Jordan Monk**

**Register of Wills**  
Vote for 1

**Keith B. Ward**  
Unopposed

**Judge of the Orphans' Court**  
Vote for up to 3

**Kathleen Crossan**  
Unopposed

**Libby Hall**  
Unopposed

**Bob McCready**  
Unopposed

**Republican Central  
Committee**  
Vote for up to 9

**Matt Adams**  
Unopposed

**Stephen G. Frey**  
Unopposed

**Bella Hambrick**  
Unopposed

**David B. Lloyd**  
Unopposed


**Matthew C. Powell**  
Unopposed

**Suzanne Tawes Smith**  
Unopposed

**Tammy Chaffey Truitt**  
Unopposed

**Nomination Vacant**

**Nomination Vacant**

**End of Ballot** 



Official Ballot  
2018 Gubernatorial Primary Election  
June 26, 2018

BS REP 9

State of Maryland, Somerset County  
Republican Ballot

Instructions

Making Selections



Fill in the oval to the left of the name of your choice. You must blacken the oval completely, and do not make any marks outside of the oval. You do not have to vote in every race.



Do not cross out or erase, or your vote may not count. If you make a mistake or a stray mark, you may ask for a new ballot.

Governor / Lt. Governor  
Vote for 1

- Larry Hogan and Boyd K. Rutherford  
Unopposed

Comptroller  
Vote for 1

- Anjali Reed Phukan  
Unopposed

Attorney General  
Vote for 1

- Craig Wolf  
Unopposed

U.S. Senator  
Vote for 1

- Tony Campbell
- Chris Chaffee
- Evan M. Cronhardt
- Nnabu Eze
- John R. Graziani
- Christina J. Grigorian
- Albert Binyahmin Howard
- Bill Krehnbrink
- Gerald I. Smith, Jr.
- Blaine Taylor
- Brian Charles Vaeth

Representative in Congress  
District 1

Vote for 1

- Martin Elborn
- Andy Harris
- Lamont Taylor

State Senator  
District 38

Vote for 1

- Mary Beth Carozza  
Unopposed

House of Delegates  
District 38A

Vote for 1

- Charles James Otto  
Unopposed

County Commissioner  
District 4

Vote for 1

- Eddie Brimer
- Charles Laird

Vote Both Sides



**Judge of the Circuit Court  
Circuit 1**  
Vote for 1

**Daniel William Powell**  
Unopposed

**State's Attorney**  
Vote for 1

**Wess Garner**  
Unopposed

**Clerk of the Circuit Court**  
Vote for 1

**Charles T. Horner**

**Jordan Monk**

**Register of Wills**  
Vote for 1

**Keith B. Ward**  
Unopposed

**Judge of the Orphans' Court**  
Vote for up to 3

**Kathleen Crossan**  
Unopposed

**Libby Hall**  
Unopposed

**Bob McCready**  
Unopposed

**Republican Central  
Committee**  
Vote for up to 9

**Matt Adams**  
Unopposed

**Stephen G. Frey**  
Unopposed

**Bella Hambrick**  
Unopposed

**David B. Lloyd**  
Unopposed

**Matthew C. Powell**  
Unopposed

**Suzanne Tawes Smith**  
Unopposed

**Tammy Chaffey Truitt**  
Unopposed

**Nomination Vacant**

**Nomination Vacant**

**End of Ballot** 

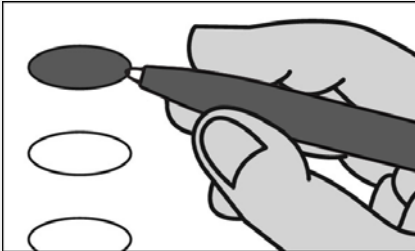
Official Ballot  
2018 Gubernatorial Primary Election  
June 26, 2018

BS DEM 1

State of Maryland, Somerset County  
Democratic Ballot

Instructions

Making Selections



Fill in the oval to the left of the name of your choice. You must blacken the oval completely, and do not make any marks outside of the oval. You do not have to vote in every race.



Do not cross out or erase, or your vote may not count. If you make a mistake or a stray mark, you may ask for a new ballot.

Governor / Lt. Governor  
Vote for 1

Rushern L. Baker, III  
and  
Elizabeth Embry

Ralph Jaffe  
and  
Freda Jaffe

Ben Jealous  
and  
Susan Turnbull

James Hugh Jones, II  
and  
Charles S. Waters

Kevin Kamenetz  
and  
Valerie Ervin

Rich Madaleno  
and  
Luwanda Jenkins

Alec Ross  
and  
Julie C. Verratti

Jim Shea  
and  
Brandon M. Scott

Krish O'Mara Vignarajah  
and  
Sharon Y. Blake

Comptroller  
Vote for 1

Peter Franchot  
Unopposed

Attorney General  
Vote for 1

Brian E. Frosh  
Unopposed

U.S. Senator  
Vote for 1

Ben Cardin

Erik Jetmir

Chelsea Manning

Marcia H. Morgan

Jerome "Jerry" Segal

Richard "Rikki" Vaughn

Debbie "Rica" Wilson

Lih Young

Vote Both Sides



<b>Representative in Congress District 1</b> <b>Vote for 1</b>
<input type="radio"/> <b>Michael Brown</b>
<input type="radio"/> <b>Jesse Colvin</b>
<input type="radio"/> <b>Allison Galbraith</b>
<input type="radio"/> <b>Erik Lane</b>
<input type="radio"/> <b>Michael Pullen</b>
<input type="radio"/> <b>Steve Worton</b>

<b>Clerk of the Circuit Court</b> <b>Vote for 1</b>
<input type="radio"/> <b>Lionel Frederick</b> Unopposed

<b>Sheriff</b> <b>Vote for 1</b>
<input type="radio"/> <b>Ronald Howard</b> Unopposed

<b>State Senator District 38</b> <b>Vote for 1</b>
<input type="radio"/> <b>Jim Mathias</b> Unopposed

<b>Democratic Central Committee Female</b> <b>Vote for up to 3</b>
<input type="radio"/> <b>Margo Green-Gale</b> Unopposed
<b>Nomination Vacant</b>
<b>Nomination Vacant</b>

<b>House of Delegates District 38A</b> <b>Vote for 1</b>
<input type="radio"/> <b>Kirkland J. Hall, Sr.</b> Unopposed

<b>Democratic Central Committee Male</b> <b>Vote for up to 3</b>
<input type="radio"/> <b>Ken Ballard</b> Unopposed
<b>Nomination Vacant</b>
<b>Nomination Vacant</b>

<b>County Commissioner District 2</b> <b>Vote for 1</b>
<input type="radio"/> <b>Rex Simpkins</b> Unopposed

<b>Judge of the Circuit Court Circuit 1</b> <b>Vote for 1</b>
<input type="radio"/> <b>Daniel William Powell</b> Unopposed

<b>End of Ballot</b> 
---

Official Ballot  
2018 Gubernatorial Primary Election  
June 26, 2018

BS DEM 2

State of Maryland, Somerset County  
Democratic Ballot

Instructions

Making Selections



Fill in the oval to the left of the name of your choice. You must blacken the oval completely, and do not make any marks outside of the oval. You do not have to vote in every race.



Do not cross out or erase, or your vote may not count. If you make a mistake or a stray mark, you may ask for a new ballot.

Governor / Lt. Governor  
Vote for 1

- Rushern L. Baker, III  
and  
Elizabeth Embry
- Ralph Jaffe  
and  
Freda Jaffe
- Ben Jealous  
and  
Susan Turnbull
- James Hugh Jones, II  
and  
Charles S. Waters
- Kevin Kamenetz  
and  
Valerie Ervin
- Rich Madaleno  
and  
Luwanda Jenkins
- Alec Ross  
and  
Julie C. Verratti
- Jim Shea  
and  
Brandon M. Scott
- Krish O'Mara Vignarajah  
and  
Sharon Y. Blake

Comptroller  
Vote for 1

- Peter Franchot  
Unopposed

Attorney General  
Vote for 1

- Brian E. Frosh  
Unopposed

U.S. Senator  
Vote for 1

- Ben Cardin
- Erik Jetmir
- Chelsea Manning
- Marcia H. Morgan
- Jerome "Jerry" Segal
- Richard "Rikki" Vaughn
- Debbie "Rica" Wilson
- Lih Young

Vote Both Sides



<b>Representative in Congress District 1</b> <b>Vote for 1</b>
<input type="radio"/> <b>Michael Brown</b>
<input type="radio"/> <b>Jesse Colvin</b>
<input type="radio"/> <b>Allison Galbraith</b>
<input type="radio"/> <b>Erik Lane</b>
<input type="radio"/> <b>Michael Pullen</b>
<input type="radio"/> <b>Steve Worton</b>

<b>Clerk of the Circuit Court</b> <b>Vote for 1</b>
<input type="radio"/> <b>Lionel Frederick</b> Unopposed

<b>Sheriff</b> <b>Vote for 1</b>
<input type="radio"/> <b>Ronald Howard</b> Unopposed

<b>State Senator District 38</b> <b>Vote for 1</b>
<input type="radio"/> <b>Jim Mathias</b> Unopposed

<b>Democratic Central Committee Female</b> <b>Vote for up to 3</b>
<input type="radio"/> <b>Margo Green-Gale</b> Unopposed
<b>Nomination Vacant</b>
<b>Nomination Vacant</b>

<b>House of Delegates District 38A</b> <b>Vote for 1</b>
<input type="radio"/> <b>Kirkland J. Hall, Sr.</b> Unopposed

<b>Democratic Central Committee Male</b> <b>Vote for up to 3</b>
<input type="radio"/> <b>Ken Ballard</b> Unopposed
<b>Nomination Vacant</b>
<b>Nomination Vacant</b>

<b>County Commissioner District 3</b> <b>Vote for 1</b>
<input type="radio"/> <b>Deborah Ann Nissley</b> Unopposed

<b>Judge of the Circuit Court Circuit 1</b> <b>Vote for 1</b>
<input type="radio"/> <b>Daniel William Powell</b> Unopposed

<b>End of Ballot</b> 
---

Official Ballot  
2018 Gubernatorial Primary Election  
June 26, 2018

BS DEM 3

State of Maryland, Somerset County  
Democratic Ballot

Instructions

Making Selections



Fill in the oval to the left of the name of your choice. You must blacken the oval completely, and do not make any marks outside of the oval. You do not have to vote in every race.



Do not cross out or erase, or your vote may not count. If you make a mistake or a stray mark, you may ask for a new ballot.

Governor / Lt. Governor  
Vote for 1

- Rushern L. Baker, III  
and  
Elizabeth Embry
- Ralph Jaffe  
and  
Freda Jaffe
- Ben Jealous  
and  
Susan Turnbull
- James Hugh Jones, II  
and  
Charles S. Waters
- Kevin Kamenetz  
and  
Valerie Ervin
- Rich Madaleno  
and  
Luwanda Jenkins
- Alec Ross  
and  
Julie C. Verratti
- Jim Shea  
and  
Brandon M. Scott
- Krish O'Mara Vignarajah  
and  
Sharon Y. Blake

Comptroller  
Vote for 1

- Peter Franchot  
Unopposed

Attorney General  
Vote for 1

- Brian E. Frosh  
Unopposed

U.S. Senator  
Vote for 1

- Ben Cardin
- Erik Jetmir
- Chelsea Manning
- Marcia H. Morgan
- Jerome "Jerry" Segal
- Richard "Rikki" Vaughn
- Debbie "Rica" Wilson
- Lih Young

Vote Both Sides



<b>Representative in Congress District 1</b> <b>Vote for 1</b>
<input type="radio"/> <b>Michael Brown</b>
<input type="radio"/> <b>Jesse Colvin</b>
<input type="radio"/> <b>Allison Galbraith</b>
<input type="radio"/> <b>Erik Lane</b>
<input type="radio"/> <b>Michael Pullen</b>
<input type="radio"/> <b>Steve Worton</b>

<b>Clerk of the Circuit Court</b> <b>Vote for 1</b>
<input type="radio"/> <b>Lionel Frederick</b> Unopposed

<b>Sheriff</b> <b>Vote for 1</b>
<input type="radio"/> <b>Ronald Howard</b> Unopposed

<b>State Senator District 38</b> <b>Vote for 1</b>
<input type="radio"/> <b>Jim Mathias</b> Unopposed

<b>Democratic Central Committee Female</b> <b>Vote for up to 3</b>
<input type="radio"/> <b>Margo Green-Gale</b> Unopposed
<b>Nomination Vacant</b>
<b>Nomination Vacant</b>

<b>House of Delegates District 38A</b> <b>Vote for 1</b>
<input type="radio"/> <b>Kirkland J. Hall, Sr.</b> Unopposed

<b>Democratic Central Committee Male</b> <b>Vote for up to 3</b>
<input type="radio"/> <b>Ken Ballard</b> Unopposed
<b>Nomination Vacant</b>
<b>Nomination Vacant</b>

<b>County Commissioner District 1</b> <b>Vote for 1</b>
<input type="radio"/> <b>Craig N. Mathies</b> Unopposed

<b>Judge of the Circuit Court Circuit 1</b> <b>Vote for 1</b>
<input type="radio"/> <b>Daniel William Powell</b> Unopposed

<b>End of Ballot</b> 
---



Official Ballot  
2018 Gubernatorial Primary Election  
June 26, 2018

BS DEM 4

State of Maryland, Somerset County  
Democratic Ballot

**Instructions**

**Making Selections**



Fill in the oval to the left of the name of your choice. You must blacken the oval completely, and do not make any marks outside of the oval. You do not have to vote in every race.



Do not cross out or erase, or your vote may not count. If you make a mistake or a stray mark, you may ask for a new ballot.

**Governor / Lt. Governor  
Vote for 1**

- Rushern L. Baker, III  
and  
Elizabeth Embry**
- Ralph Jaffe  
and  
Freda Jaffe**
- Ben Jealous  
and  
Susan Turnbull**
- James Hugh Jones, II  
and  
Charles S. Waters**
- Kevin Kamenetz  
and  
Valerie Ervin**
- Rich Madaleno  
and  
Luwanda Jenkins**
- Alec Ross  
and  
Julie C. Verratti**
- Jim Shea  
and  
Brandon M. Scott**
- Krish O'Mara Vignarajah  
and  
Sharon Y. Blake**

**Comptroller  
Vote for 1**

- Peter Franchot  
Unopposed**

**Attorney General  
Vote for 1**

- Brian E. Frosh  
Unopposed**

**U.S. Senator  
Vote for 1**

- Ben Cardin**
- Erik Jetmir**
- Chelsea Manning**
- Marcia H. Morgan**
- Jerome "Jerry" Segal**
- Richard "Rikki" Vaughn**
- Debbie "Rica" Wilson**
- Lih Young**

**Vote Both Sides**



<b>Representative in Congress District 1</b> Vote for 1
<input type="radio"/> <b>Michael Brown</b>
<input type="radio"/> <b>Jesse Colvin</b>
<input type="radio"/> <b>Allison Galbraith</b>
<input type="radio"/> <b>Erik Lane</b>
<input type="radio"/> <b>Michael Pullen</b>
<input type="radio"/> <b>Steve Worton</b>

<b>Clerk of the Circuit Court</b> Vote for 1
<input type="radio"/> <b>Lionel Frederick</b> Unopposed

<b>Sheriff</b> Vote for 1
<input type="radio"/> <b>Ronald Howard</b> Unopposed

<b>State Senator District 38</b> Vote for 1
<input type="radio"/> <b>Jim Mathias</b> Unopposed

<b>Democratic Central Committee Female</b> Vote for up to 3
<input type="radio"/> <b>Margo Green-Gale</b> Unopposed
<b>Nomination Vacant</b>
<b>Nomination Vacant</b>

<b>House of Delegates District 38A</b> Vote for 1
<input type="radio"/> <b>Kirkland J. Hall, Sr.</b> Unopposed

<b>Democratic Central Committee Male</b> Vote for up to 3
<input type="radio"/> <b>Ken Ballard</b> Unopposed
<b>Nomination Vacant</b>
<b>Nomination Vacant</b>

<b>County Commissioner District 4</b> Vote for 1
<input type="radio"/> <b>Ken Ballard</b> Unopposed

<b>Judge of the Circuit Court Circuit 1</b> Vote for 1
<input type="radio"/> <b>Daniel William Powell</b> Unopposed

<b>End of Ballot</b> 
---

Official Ballot  
2018 Gubernatorial Primary Election  
June 26, 2018

BS DEM 5

State of Maryland, Somerset County  
Democratic Ballot

Instructions

Making Selections



Fill in the oval to the left of the name of your choice. You must blacken the oval completely, and do not make any marks outside of the oval. You do not have to vote in every race.



Do not cross out or erase, or your vote may not count. If you make a mistake or a stray mark, you may ask for a new ballot.

Governor / Lt. Governor  
Vote for 1

- Rushern L. Baker, III  
and  
Elizabeth Embry
- Ralph Jaffe  
and  
Freda Jaffe
- Ben Jealous  
and  
Susan Turnbull
- James Hugh Jones, II  
and  
Charles S. Waters
- Kevin Kamenetz  
and  
Valerie Ervin
- Rich Madaleno  
and  
Luwanda Jenkins
- Alec Ross  
and  
Julie C. Verratti
- Jim Shea  
and  
Brandon M. Scott
- Krish O'Mara Vignarajah  
and  
Sharon Y. Blake

Comptroller  
Vote for 1

- Peter Franchot  
Unopposed

Attorney General  
Vote for 1

- Brian E. Frosh  
Unopposed

U.S. Senator  
Vote for 1

- Ben Cardin
- Erik Jetmir
- Chelsea Manning
- Marcia H. Morgan
- Jerome "Jerry" Segal
- Richard "Rikki" Vaughn
- Debbie "Rica" Wilson
- Lih Young

Vote Both Sides



<b>Representative in Congress District 1</b> <b>Vote for 1</b>
<input type="radio"/> <b>Michael Brown</b>
<input type="radio"/> <b>Jesse Colvin</b>
<input type="radio"/> <b>Allison Galbraith</b>
<input type="radio"/> <b>Erik Lane</b>
<input type="radio"/> <b>Michael Pullen</b>
<input type="radio"/> <b>Steve Worton</b>

<b>Clerk of the Circuit Court</b> <b>Vote for 1</b>
<input type="radio"/> <b>Lionel Frederick</b> Unopposed

<b>Sheriff</b> <b>Vote for 1</b>
<input type="radio"/> <b>Ronald Howard</b> Unopposed

<b>State Senator District 38</b> <b>Vote for 1</b>
<input type="radio"/> <b>Jim Mathias</b> Unopposed

<b>Democratic Central Committee Female</b> <b>Vote for up to 3</b>
<input type="radio"/> <b>Margo Green-Gale</b> Unopposed
<b>Nomination Vacant</b>
<b>Nomination Vacant</b>

<b>House of Delegates District 38A</b> <b>Vote for 1</b>
<input type="radio"/> <b>Kirkland J. Hall, Sr.</b> Unopposed

<b>Democratic Central Committee Male</b> <b>Vote for up to 3</b>
<input type="radio"/> <b>Ken Ballard</b> Unopposed
<b>Nomination Vacant</b>
<b>Nomination Vacant</b>

<b>County Commissioner District 5</b> <b>Vote for 1</b>
<input type="radio"/> <b>Randy Laird</b> Unopposed

<b>Judge of the Circuit Court Circuit 1</b> <b>Vote for 1</b>
<input type="radio"/> <b>Daniel William Powell</b> Unopposed

<b>End of Ballot</b> 
---

Official Ballot  
2018 Gubernatorial Primary Election  
June 26, 2018

BS DEM 6

State of Maryland, Somerset County  
Democratic Ballot

**Instructions**

**Making Selections**



Fill in the oval to the left of the name of your choice. You must blacken the oval completely, and do not make any marks outside of the oval. You do not have to vote in every race.



Do not cross out or erase, or your vote may not count. If you make a mistake or a stray mark, you may ask for a new ballot.

**Governor / Lt. Governor  
Vote for 1**

**Rushern L. Baker, III  
and  
Elizabeth Embry**

**Ralph Jaffe  
and  
Freda Jaffe**

**Ben Jealous  
and  
Susan Turnbull**

**James Hugh Jones, II  
and  
Charles S. Waters**

**Kevin Kamenetz  
and  
Valerie Ervin**

**Rich Madaleno  
and  
Luwanda Jenkins**

**Alec Ross  
and  
Julie C. Verratti**

**Jim Shea  
and  
Brandon M. Scott**

**Krish O'Mara Vignarajah  
and  
Sharon Y. Blake**

**Comptroller  
Vote for 1**

**Peter Franchot  
Unopposed**

**Attorney General  
Vote for 1**

**Brian E. Frosh  
Unopposed**

**U.S. Senator  
Vote for 1**

**Ben Cardin**

**Erik Jetmir**

**Chelsea Manning**

**Marcia H. Morgan**

**Jerome "Jerry" Segal**

**Richard "Rikki" Vaughn**

**Debbie "Rica" Wilson**

**Lih Young**

**Vote Both Sides**



<b>Representative in Congress District 1</b> <b>Vote for 1</b>
<input type="radio"/> <b>Michael Brown</b>
<input type="radio"/> <b>Jesse Colvin</b>
<input type="radio"/> <b>Allison Galbraith</b>
<input type="radio"/> <b>Erik Lane</b>
<input type="radio"/> <b>Michael Pullen</b>
<input type="radio"/> <b>Steve Worton</b>

<b>Clerk of the Circuit Court</b> <b>Vote for 1</b>
<input type="radio"/> <b>Lionel Frederick</b> Unopposed

<b>Sheriff</b> <b>Vote for 1</b>
<input type="radio"/> <b>Ronald Howard</b> Unopposed

<b>State Senator District 38</b> <b>Vote for 1</b>
<input type="radio"/> <b>Jim Mathias</b> Unopposed

<b>Democratic Central Committee Female</b> <b>Vote for up to 3</b>
<input type="radio"/> <b>Margo Green-Gale</b> Unopposed
<b>Nomination Vacant</b>
<b>Nomination Vacant</b>

<b>House of Delegates District 38A</b> <b>Vote for 1</b>
<input type="radio"/> <b>Kirkland J. Hall, Sr.</b> Unopposed

<b>Democratic Central Committee Male</b> <b>Vote for up to 3</b>
<input type="radio"/> <b>Ken Ballard</b> Unopposed
<b>Nomination Vacant</b>
<b>Nomination Vacant</b>

<b>County Commissioner District 5</b> <b>Vote for 1</b>
<input type="radio"/> <b>Randy Laird</b> Unopposed

<b>Judge of the Circuit Court Circuit 1</b> <b>Vote for 1</b>
<input type="radio"/> <b>Daniel William Powell</b> Unopposed

<b>End of Ballot</b> 
---

Official Ballot  
2018 Gubernatorial Primary Election  
June 26, 2018

BS DEM 7

State of Maryland, Somerset County  
Democratic Ballot

Instructions

Making Selections



Fill in the oval to the left of the name of your choice. You must blacken the oval completely, and do not make any marks outside of the oval. You do not have to vote in every race.



Do not cross out or erase, or your vote may not count. If you make a mistake or a stray mark, you may ask for a new ballot.

Governor / Lt. Governor  
Vote for 1

- Rushern L. Baker, III  
and  
Elizabeth Embry
- Ralph Jaffe  
and  
Freda Jaffe
- Ben Jealous  
and  
Susan Turnbull
- James Hugh Jones, II  
and  
Charles S. Waters
- Kevin Kamenetz  
and  
Valerie Ervin
- Rich Madaleno  
and  
Luwanda Jenkins
- Alec Ross  
and  
Julie C. Verratti
- Jim Shea  
and  
Brandon M. Scott
- Krish O'Mara Vignarajah  
and  
Sharon Y. Blake

Comptroller  
Vote for 1

- Peter Franchot  
Unopposed

Attorney General  
Vote for 1

- Brian E. Frosh  
Unopposed

U.S. Senator  
Vote for 1

- Ben Cardin
- Erik Jetmir
- Chelsea Manning
- Marcia H. Morgan
- Jerome "Jerry" Segal
- Richard "Rikki" Vaughn
- Debbie "Rica" Wilson
- Lih Young

Vote Both Sides



<b>Representative in Congress District 1</b> <b>Vote for 1</b>
<input type="radio"/> <b>Michael Brown</b>
<input type="radio"/> <b>Jesse Colvin</b>
<input type="radio"/> <b>Allison Galbraith</b>
<input type="radio"/> <b>Erik Lane</b>
<input type="radio"/> <b>Michael Pullen</b>
<input type="radio"/> <b>Steve Worton</b>

<b>Clerk of the Circuit Court</b> <b>Vote for 1</b>
<input type="radio"/> <b>Lionel Frederick</b> Unopposed

<b>Sheriff</b> <b>Vote for 1</b>
<input type="radio"/> <b>Ronald Howard</b> Unopposed

<b>State Senator District 38</b> <b>Vote for 1</b>
<input type="radio"/> <b>Jim Mathias</b> Unopposed

<b>Democratic Central Committee Female</b> <b>Vote for up to 3</b>
<input type="radio"/> <b>Margo Green-Gale</b> Unopposed
<b>Nomination Vacant</b>
<b>Nomination Vacant</b>

<b>House of Delegates District 38A</b> <b>Vote for 1</b>
<input type="radio"/> <b>Kirkland J. Hall, Sr.</b> Unopposed

<b>Democratic Central Committee Male</b> <b>Vote for up to 3</b>
<input type="radio"/> <b>Ken Ballard</b> Unopposed
<b>Nomination Vacant</b>
<b>Nomination Vacant</b>

<b>County Commissioner District 3</b> <b>Vote for 1</b>
<input type="radio"/> <b>Deborah Ann Nissley</b> Unopposed

<b>Judge of the Circuit Court Circuit 1</b> <b>Vote for 1</b>
<input type="radio"/> <b>Daniel William Powell</b> Unopposed

<b>End of Ballot</b> 
---



Official Ballot  
2018 Gubernatorial Primary Election  
June 26, 2018

BS DEM 8

State of Maryland, Somerset County  
Democratic Ballot

**Instructions**

**Making Selections**



Fill in the oval to the left of the name of your choice. You must blacken the oval completely, and do not make any marks outside of the oval. You do not have to vote in every race.



Do not cross out or erase, or your vote may not count. If you make a mistake or a stray mark, you may ask for a new ballot.

**Governor / Lt. Governor  
Vote for 1**

- Rushern L. Baker, III  
and  
Elizabeth Embry**
- Ralph Jaffe  
and  
Freda Jaffe**
- Ben Jealous  
and  
Susan Turnbull**
- James Hugh Jones, II  
and  
Charles S. Waters**
- Kevin Kamenetz  
and  
Valerie Ervin**
- Rich Madaleno  
and  
Luwanda Jenkins**
- Alec Ross  
and  
Julie C. Verratti**
- Jim Shea  
and  
Brandon M. Scott**
- Krish O'Mara Vignarajah  
and  
Sharon Y. Blake**

**Comptroller  
Vote for 1**

- Peter Franchot  
Unopposed**

**Attorney General  
Vote for 1**

- Brian E. Frosh  
Unopposed**

**U.S. Senator  
Vote for 1**

- Ben Cardin**
- Erik Jetmir**
- Chelsea Manning**
- Marcia H. Morgan**
- Jerome "Jerry" Segal**
- Richard "Rikki" Vaughn**
- Debbie "Rica" Wilson**
- Lih Young**

**Vote Both Sides**



<b>Representative in Congress District 1</b> <b>Vote for 1</b>
<input type="radio"/> <b>Michael Brown</b>
<input type="radio"/> <b>Jesse Colvin</b>
<input type="radio"/> <b>Allison Galbraith</b>
<input type="radio"/> <b>Erik Lane</b>
<input type="radio"/> <b>Michael Pullen</b>
<input type="radio"/> <b>Steve Worton</b>

<b>Clerk of the Circuit Court</b> <b>Vote for 1</b>
<input type="radio"/> <b>Lionel Frederick</b> Unopposed

<b>Sheriff</b> <b>Vote for 1</b>
<input type="radio"/> <b>Ronald Howard</b> Unopposed

<b>State Senator District 38</b> <b>Vote for 1</b>
<input type="radio"/> <b>Jim Mathias</b> Unopposed

<b>Democratic Central Committee Female</b> <b>Vote for up to 3</b>
<input type="radio"/> <b>Margo Green-Gale</b> Unopposed
<b>Nomination Vacant</b>
<b>Nomination Vacant</b>

<b>House of Delegates District 38A</b> <b>Vote for 1</b>
<input type="radio"/> <b>Kirkland J. Hall, Sr.</b> Unopposed

<b>Democratic Central Committee Male</b> <b>Vote for up to 3</b>
<input type="radio"/> <b>Ken Ballard</b> Unopposed
<b>Nomination Vacant</b>
<b>Nomination Vacant</b>

<b>County Commissioner District 3</b> <b>Vote for 1</b>
<input type="radio"/> <b>Deborah Ann Nissley</b> Unopposed

<b>Judge of the Circuit Court Circuit 1</b> <b>Vote for 1</b>
<input type="radio"/> <b>Daniel William Powell</b> Unopposed

<b>End of Ballot</b> 
---

Official Ballot  
2018 Gubernatorial Primary Election  
June 26, 2018

BS DEM 9

State of Maryland, Somerset County  
Democratic Ballot

Instructions

Making Selections



Fill in the oval to the left of the name of your choice. You must blacken the oval completely, and do not make any marks outside of the oval. You do not have to vote in every race.



Do not cross out or erase, or your vote may not count. If you make a mistake or a stray mark, you may ask for a new ballot.

Governor / Lt. Governor  
Vote for 1

- Rushern L. Baker, III  
and  
Elizabeth Embry
- Ralph Jaffe  
and  
Freda Jaffe
- Ben Jealous  
and  
Susan Turnbull
- James Hugh Jones, II  
and  
Charles S. Waters
- Kevin Kamenetz  
and  
Valerie Ervin
- Rich Madaleno  
and  
Luwanda Jenkins
- Alec Ross  
and  
Julie C. Verratti
- Jim Shea  
and  
Brandon M. Scott
- Krish O'Mara Vignarajah  
and  
Sharon Y. Blake

Comptroller  
Vote for 1

- Peter Franchot  
Unopposed

Attorney General  
Vote for 1

- Brian E. Frosh  
Unopposed

U.S. Senator  
Vote for 1

- Ben Cardin
- Erik Jetmir
- Chelsea Manning
- Marcia H. Morgan
- Jerome "Jerry" Segal
- Richard "Rikki" Vaughn
- Debbie "Rica" Wilson
- Lih Young

Vote Both Sides



<b>Representative in Congress District 1</b> <b>Vote for 1</b>
<input type="radio"/> <b>Michael Brown</b>
<input type="radio"/> <b>Jesse Colvin</b>
<input type="radio"/> <b>Allison Galbraith</b>
<input type="radio"/> <b>Erik Lane</b>
<input type="radio"/> <b>Michael Pullen</b>
<input type="radio"/> <b>Steve Worton</b>

<b>Clerk of the Circuit Court</b> <b>Vote for 1</b>
<input type="radio"/> <b>Lionel Frederick</b> Unopposed

<b>Sheriff</b> <b>Vote for 1</b>
<input type="radio"/> <b>Ronald Howard</b> Unopposed

<b>State Senator District 38</b> <b>Vote for 1</b>
<input type="radio"/> <b>Jim Mathias</b> Unopposed

<b>Democratic Central Committee Female</b> <b>Vote for up to 3</b>
<input type="radio"/> <b>Margo Green-Gale</b> Unopposed
<b>Nomination Vacant</b>
<b>Nomination Vacant</b>

<b>House of Delegates District 38A</b> <b>Vote for 1</b>
<input type="radio"/> <b>Kirkland J. Hall, Sr.</b> Unopposed

<b>Democratic Central Committee Male</b> <b>Vote for up to 3</b>
<input type="radio"/> <b>Ken Ballard</b> Unopposed
<b>Nomination Vacant</b>
<b>Nomination Vacant</b>

<b>County Commissioner District 4</b> <b>Vote for 1</b>
<input type="radio"/> <b>Ken Ballard</b> Unopposed

<b>Judge of the Circuit Court Circuit 1</b> <b>Vote for 1</b>
<input type="radio"/> <b>Daniel William Powell</b> Unopposed

<b>End of Ballot</b> 
---