

Official Ballot  
2018 Gubernatorial Primary Election  
June 26, 2018

BS REP 1

State of Maryland, Wicomico County  
Republican Ballot

Instructions

Making Selections



Fill in the oval to the left of the name of your choice. You must blacken the oval completely, and do not make any marks outside of the oval. You do not have to vote in every race.



Do not cross out or erase, or your vote may not count. If you make a mistake or a stray mark, you may ask for a new ballot.

Governor / Lt. Governor  
Vote for 1

- Larry Hogan and Boyd K. Rutherford Unopposed

Comptroller  
Vote for 1

- Anjali Reed Phukan Unopposed

Attorney General  
Vote for 1

- Craig Wolf Unopposed

U.S. Senator  
Vote for 1

- Tony Campbell
- Chris Chaffee
- Evan M. Cronhardt
- Nnabu Eze
- John R. Graziani
- Christina J. Grigorian
- Albert Binyahmin Howard
- Bill Krehnbrink
- Gerald I. Smith, Jr.
- Blaine Taylor
- Brian Charles Vaeth

Representative in Congress  
District 1

Vote for 1

- Martin Elborn
- Andy Harris
- Lamont Taylor

State Senator  
District 37

Vote for 1

- Adelaide "Addie" Eckardt Unopposed

House of Delegates  
District 37A

Vote for 1

- Frank E. Cooke Unopposed

County Executive

Vote for 1

- Bob Culver Unopposed

Vote Both Sides





<b>County Council At Large</b> <b>Vote for up to 2</b>
<input type="radio"/> <b>Julie D. Brewington</b> Unopposed
<input type="radio"/> <b>John T. Cannon</b> Unopposed

<b>Judge of the Circuit Court</b> <b>Circuit 1</b> <b>Vote for up to 2</b>
<input type="radio"/> <b>Kathleen L. Beckstead</b> Unopposed
<input type="radio"/> <b>Matthew A. Maciarelo</b> Unopposed

<b>State's Attorney</b> <b>Vote for 1</b>
<input type="radio"/> <b>Jamie Dykes</b> Unopposed


<b>Clerk of the Circuit Court</b> <b>Vote for 1</b>
<input type="radio"/> <b>Shawn A. Bradley</b>
<input type="radio"/> <b>Christopher S. Welch</b>

<b>Judge of the Orphans' Court</b> <b>Vote for up to 3</b>
<input type="radio"/> <b>Grover Green Cantwell, Jr.</b> Unopposed
<b>Nomination Vacant</b>
<b>Nomination Vacant</b>

<b>Sheriff</b> <b>Vote for 1</b>
<input type="radio"/> <b>Mike Lewis</b> Unopposed

<b>Republican Central</b> <b>Committee</b> <b>Vote for up to 9</b>
<input type="radio"/> <b>Wendy Anspacher</b>
<input type="radio"/> <b>Muir Boda</b>
<input type="radio"/> <b>Shawn A. Bradley</b>
<input type="radio"/> <b>Julie D. Brewington</b>
<input type="radio"/> <b>Larry W. Dodd</b>
<input type="radio"/> <b>Joan Frances Gentile</b>
<input type="radio"/> <b>David L. Goslee, Sr.</b>
<input type="radio"/> <b>Jim Jester</b>
<input type="radio"/> <b>Linda Raye Luffman</b>
<input type="radio"/> <b>Mark G. McIver</b>
<input type="radio"/> <b>John Palmer</b>
<input type="radio"/> <b>Nate Sansom</b>
<input type="radio"/> <b>David Louis Snyder</b>

<b>Board of Education</b> <b>District 1</b> <b>Vote for 1</b>
<input type="radio"/> <b>Ruth Angelot</b>
<input type="radio"/> <b>Michelle Bradley</b>
<input type="radio"/> <b>Allen C. Brown</b>

<b>End of Ballot</b> 
---



Official Ballot  
2018 Gubernatorial Primary Election  
June 26, 2018

BS REP 2

State of Maryland, Wicomico County  
Republican Ballot

Instructions

Making Selections



Fill in the oval to the left of the name of your choice. You must blacken the oval completely, and do not make any marks outside of the oval. You do not have to vote in every race.



Do not cross out or erase, or your vote may not count. If you make a mistake or a stray mark, you may ask for a new ballot.

Governor / Lt. Governor  
Vote for 1

- Larry Hogan and Boyd K. Rutherford Unopposed

Comptroller  
Vote for 1

- Anjali Reed Phukan Unopposed

Attorney General  
Vote for 1

- Craig Wolf Unopposed

U.S. Senator  
Vote for 1

- Tony Campbell
- Chris Chaffee
- Evan M. Cronhardt
- Nnabu Eze
- John R. Graziani
- Christina J. Grigorian
- Albert Binyahmin Howard
- Bill Krehnbrink
- Gerald I. Smith, Jr.
- Blaine Taylor
- Brian Charles Vaeth

Representative in Congress  
District 1

Vote for 1

- Martin Elborn
- Andy Harris
- Lamont Taylor

State Senator  
District 37

Vote for 1

- Adelaide "Addie" Eckardt Unopposed

House of Delegates  
District 37A

Vote for 1

- Frank E. Cooke Unopposed

County Executive

Vote for 1

- Bob Culver Unopposed

Vote Both Sides





<b>County Council At Large</b> <b>Vote for up to 2</b>
<input type="radio"/> <b>Julie D. Brewington</b> Unopposed
<input type="radio"/> <b>John T. Cannon</b> Unopposed

<b>Sheriff</b> <b>Vote for 1</b>
<input type="radio"/> <b>Mike Lewis</b> Unopposed

<b>County Council District 2</b> <b>Vote for 1</b>
<input type="radio"/> <b>Marc Kilmer</b> Unopposed

<b>Republican Central Committee</b> <b>Vote for up to 9</b>
<input type="radio"/> <b>Wendy Anspacher</b>
<input type="radio"/> <b>Muir Boda</b>
<input type="radio"/> <b>Shawn A. Bradley</b>
<input type="radio"/> <b>Julie D. Brewington</b>
<input type="radio"/> <b>Larry W. Dodd</b>
<input type="radio"/> <b>Joan Frances Gentile</b>
<input type="radio"/> <b>David L. Goslee, Sr.</b>
<input type="radio"/> <b>Jim Jester</b>
<input type="radio"/> <b>Linda Raye Luffman</b>
<input type="radio"/> <b>Mark G. McIver</b>
<input type="radio"/> <b>John Palmer</b>
<input type="radio"/> <b>Nate Sansom</b>
<input type="radio"/> <b>David Louis Snyder</b>

<b>Judge of the Circuit Court Circuit 1</b> <b>Vote for up to 2</b>
<input type="radio"/> <b>Kathleen L. Beckstead</b> Unopposed
<input type="radio"/> <b>Matthew A. Maciarelo</b> Unopposed

<b>State's Attorney</b> <b>Vote for 1</b>
<input type="radio"/> <b>Jamie Dykes</b> Unopposed

<b>Clerk of the Circuit Court</b> <b>Vote for 1</b>
<input type="radio"/> <b>Shawn A. Bradley</b>
<input type="radio"/> <b>Christopher S. Welch</b>

<b>Judge of the Orphans' Court</b> <b>Vote for up to 3</b>
<input type="radio"/> <b>Grover Green Cantwell, Jr.</b> Unopposed
<b>Nomination Vacant</b>
<b>Nomination Vacant</b>

<b>End of Ballot</b> 
---



Official Ballot  
2018 Gubernatorial Primary Election  
June 26, 2018

BS REP 3

State of Maryland, Wicomico County  
Republican Ballot

Instructions

Making Selections



Fill in the oval to the left of the name of your choice. You must blacken the oval completely, and do not make any marks outside of the oval. You do not have to vote in every race.



Do not cross out or erase, or your vote may not count. If you make a mistake or a stray mark, you may ask for a new ballot.

Governor / Lt. Governor  
Vote for 1

- Larry Hogan and Boyd K. Rutherford Unopposed

Comptroller  
Vote for 1

- Anjali Reed Phukan Unopposed

Attorney General  
Vote for 1

- Craig Wolf Unopposed

U.S. Senator  
Vote for 1

- Tony Campbell
- Chris Chaffee
- Evan M. Cronhardt
- Nnabu Eze
- John R. Graziani
- Christina J. Grigorian
- Albert Binyahmin Howard
- Bill Krehnbrink
- Gerald I. Smith, Jr.
- Blaine Taylor
- Brian Charles Vaeth

Representative in Congress  
District 1

Vote for 1

- Martin Elborn
- Andy Harris
- Lamont Taylor

State Senator  
District 37

Vote for 1

- Adelaide "Addie" Eckardt Unopposed

House of Delegates  
District 37B

Vote for up to 2

- Christopher T. Adams
- Mimi Gedamu
- Keith Graffius
- Johnny Mautz

County Executive  
Vote for 1

- Bob Culver Unopposed

Vote Both Sides





<b>County Council At Large</b> <b>Vote for up to 2</b>
<input type="radio"/> <b>Julie D. Brewington</b> Unopposed
<input type="radio"/> <b>John T. Cannon</b> Unopposed

<b>Sheriff</b> <b>Vote for 1</b>
<input type="radio"/> <b>Mike Lewis</b> Unopposed

<b>County Council District 2</b> <b>Vote for 1</b>
<input type="radio"/> <b>Marc Kilmer</b> Unopposed

<b>Republican Central Committee</b> <b>Vote for up to 9</b>
<input type="radio"/> <b>Wendy Anspacher</b>
<input type="radio"/> <b>Muir Boda</b>
<input type="radio"/> <b>Shawn A. Bradley</b>
<input type="radio"/> <b>Julie D. Brewington</b>
<input type="radio"/> <b>Larry W. Dodd</b>
<input type="radio"/> <b>Joan Frances Gentile</b>
<input type="radio"/> <b>David L. Goslee, Sr.</b>
<input type="radio"/> <b>Jim Jester</b>
<input type="radio"/> <b>Linda Raye Luffman</b>
<input type="radio"/> <b>Mark G. McIver</b>
<input type="radio"/> <b>John Palmer</b>
<input type="radio"/> <b>Nate Sansom</b>
<input type="radio"/> <b>David Louis Snyder</b>

<b>Judge of the Circuit Court Circuit 1</b> <b>Vote for up to 2</b>
<input type="radio"/> <b>Kathleen L. Beckstead</b> Unopposed
<input type="radio"/> <b>Matthew A. Maciarelo</b> Unopposed

<b>State's Attorney</b> <b>Vote for 1</b>
<input type="radio"/> <b>Jamie Dykes</b> Unopposed

<b>Clerk of the Circuit Court</b> <b>Vote for 1</b>
<input type="radio"/> <b>Shawn A. Bradley</b>
<input type="radio"/> <b>Christopher S. Welch</b>

<b>Judge of the Orphans' Court</b> <b>Vote for up to 3</b>
<input type="radio"/> <b>Grover Green Cantwell, Jr.</b> Unopposed
<b>Nomination Vacant</b>
<b>Nomination Vacant</b>

<b>End of Ballot</b> 
---



Official Ballot  
2018 Gubernatorial Primary Election  
June 26, 2018

BS REP 4

State of Maryland, Wicomico County  
Republican Ballot

Instructions

Making Selections



Fill in the oval to the left of the name of your choice. You must blacken the oval completely, and do not make any marks outside of the oval. You do not have to vote in every race.



Do not cross out or erase, or your vote may not count. If you make a mistake or a stray mark, you may ask for a new ballot.

Governor / Lt. Governor  
Vote for 1

- Larry Hogan and Boyd K. Rutherford Unopposed

Comptroller  
Vote for 1

- Anjali Reed Phukan Unopposed

Attorney General  
Vote for 1

- Craig Wolf Unopposed

U.S. Senator  
Vote for 1

- Tony Campbell
- Chris Chaffee
- Evan M. Cronhardt
- Nnabu Eze
- John R. Graziani
- Christina J. Grigorian
- Albert Binyahmin Howard
- Bill Krehnbrink
- Gerald I. Smith, Jr.
- Blaine Taylor
- Brian Charles Vaeth

Representative in Congress  
District 1

Vote for 1

- Martin Elborn
- Andy Harris
- Lamont Taylor

State Senator  
District 38

Vote for 1

- Mary Beth Carozza Unopposed

House of Delegates  
District 38C

Vote for 1

- Wayne A. Hartman
- Joe Schanno
- Jim Shaffer
- Ed Tinus

County Executive  
Vote for 1

- Bob Culver Unopposed

Vote Both Sides





<b>County Council At Large</b> <b>Vote for up to 2</b>
<input type="radio"/> <b>Julie D. Brewington</b> Unopposed
<input type="radio"/> <b>John T. Cannon</b> Unopposed

<b>Sheriff</b> <b>Vote for 1</b>
<input type="radio"/> <b>Mike Lewis</b> Unopposed

<b>County Council District 3</b> <b>Vote for 1</b>
<input type="radio"/> <b>Larry W. Dodd</b> Unopposed

<b>Republican Central Committee</b> <b>Vote for up to 9</b>
<input type="radio"/> <b>Wendy Anspacher</b>
<input type="radio"/> <b>Muir Boda</b>
<input type="radio"/> <b>Shawn A. Bradley</b>
<input type="radio"/> <b>Julie D. Brewington</b>
<input type="radio"/> <b>Larry W. Dodd</b>
<input type="radio"/> <b>Joan Frances Gentile</b>
<input type="radio"/> <b>David L. Goslee, Sr.</b>
<input type="radio"/> <b>Jim Jester</b>
<input type="radio"/> <b>Linda Raye Luffman</b>
<input type="radio"/> <b>Mark G. McIver</b>
<input type="radio"/> <b>John Palmer</b>
<input type="radio"/> <b>Nate Sansom</b>
<input type="radio"/> <b>David Louis Snyder</b>

<b>Judge of the Circuit Court Circuit 1</b> <b>Vote for up to 2</b>
<input type="radio"/> <b>Kathleen L. Beckstead</b> Unopposed
<input type="radio"/> <b>Matthew A. Maciarelo</b> Unopposed

<b>State's Attorney</b> <b>Vote for 1</b>
<input type="radio"/> <b>Jamie Dykes</b> Unopposed

<b>Clerk of the Circuit Court</b> <b>Vote for 1</b>
<input type="radio"/> <b>Shawn A. Bradley</b>
<input type="radio"/> <b>Christopher S. Welch</b>

<b>Judge of the Orphans' Court</b> <b>Vote for up to 3</b>
<input type="radio"/> <b>Grover Green Cantwell, Jr.</b> Unopposed
<b>Nomination Vacant</b>
<b>Nomination Vacant</b>

<b>End of Ballot</b> 
---





Official Ballot  
2018 Gubernatorial Primary Election  
June 26, 2018

BS REP 5

State of Maryland, Wicomico County  
Republican Ballot

Instructions

Making Selections



Fill in the oval to the left of the name of your choice. You must blacken the oval completely, and do not make any marks outside of the oval. You do not have to vote in every race.



Do not cross out or erase, or your vote may not count. If you make a mistake or a stray mark, you may ask for a new ballot.

Governor / Lt. Governor  
Vote for 1

- Larry Hogan and Boyd K. Rutherford Unopposed

Comptroller  
Vote for 1

- Anjali Reed Phukan Unopposed

Attorney General  
Vote for 1

- Craig Wolf Unopposed

U.S. Senator  
Vote for 1

- Tony Campbell
- Chris Chaffee
- Evan M. Cronhardt
- Nnabu Eze
- John R. Graziani
- Christina J. Grigorian
- Albert Binyahmin Howard
- Bill Krehnbrink
- Gerald I. Smith, Jr.
- Blaine Taylor
- Brian Charles Vaeth

Representative in Congress  
District 1

Vote for 1

- Martin Elborn
- Andy Harris
- Lamont Taylor

State Senator  
District 38

Vote for 1

- Mary Beth Carozza Unopposed

House of Delegates  
District 38C

Vote for 1

- Wayne A. Hartman
- Joe Schanno
- Jim Shaffer
- Ed Tinus

County Executive  
Vote for 1

- Bob Culver Unopposed

Vote Both Sides





<b>County Council At Large</b> <b>Vote for up to 2</b>
<input type="radio"/> <b>Julie D. Brewington</b> Unopposed
<input type="radio"/> <b>John T. Cannon</b> Unopposed

<b>Sheriff</b> <b>Vote for 1</b>
<input type="radio"/> <b>Mike Lewis</b> Unopposed

<b>County Council District 5</b> <b>Vote for 1</b>
<input type="radio"/> <b>Joe Holloway</b> Unopposed

<b>Republican Central Committee</b> <b>Vote for up to 9</b>
<input type="radio"/> <b>Wendy Anspacher</b>
<input type="radio"/> <b>Muir Boda</b>
<input type="radio"/> <b>Shawn A. Bradley</b>
<input type="radio"/> <b>Julie D. Brewington</b>
<input type="radio"/> <b>Larry W. Dodd</b>
<input type="radio"/> <b>Joan Frances Gentile</b>
<input type="radio"/> <b>David L. Goslee, Sr.</b>
<input type="radio"/> <b>Jim Jester</b>
<input type="radio"/> <b>Linda Raye Luffman</b>
<input type="radio"/> <b>Mark G. McIver</b>
<input type="radio"/> <b>John Palmer</b>
<input type="radio"/> <b>Nate Sansom</b>
<input type="radio"/> <b>David Louis Snyder</b>

<b>Judge of the Circuit Court Circuit 1</b> <b>Vote for up to 2</b>
<input type="radio"/> <b>Kathleen L. Beckstead</b> Unopposed
<input type="radio"/> <b>Matthew A. Maciarelo</b> Unopposed

<b>State's Attorney</b> <b>Vote for 1</b>
<input type="radio"/> <b>Jamie Dykes</b> Unopposed

<b>Clerk of the Circuit Court</b> <b>Vote for 1</b>
<input type="radio"/> <b>Shawn A. Bradley</b>
<input type="radio"/> <b>Christopher S. Welch</b>

<b>Judge of the Orphans' Court</b> <b>Vote for up to 3</b>
<input type="radio"/> <b>Grover Green Cantwell, Jr.</b> Unopposed
<b>Nomination Vacant</b>
<b>Nomination Vacant</b>

<b>End of Ballot</b> 
---



Official Ballot  
2018 Gubernatorial Primary Election  
June 26, 2018

BS REP 6

State of Maryland, Wicomico County  
Republican Ballot

Instructions

Making Selections



Fill in the oval to the left of the name of your choice. You must blacken the oval completely, and do not make any marks outside of the oval. You do not have to vote in every race.



Do not cross out or erase, or your vote may not count. If you make a mistake or a stray mark, you may ask for a new ballot.

Governor / Lt. Governor  
Vote for 1

- Larry Hogan and Boyd K. Rutherford Unopposed

Comptroller  
Vote for 1

- Anjali Reed Phukan Unopposed

Attorney General  
Vote for 1

- Craig Wolf Unopposed

U.S. Senator  
Vote for 1

- Tony Campbell
- Chris Chaffee
- Evan M. Cronhardt
- Nnabu Eze
- John R. Graziani
- Christina J. Grigorian
- Albert Binyahmin Howard
- Bill Krehnbrink
- Gerald I. Smith, Jr.
- Blaine Taylor
- Brian Charles Vaeth

Representative in Congress  
District 1

Vote for 1

- Martin Elborn
- Andy Harris
- Lamont Taylor

State Senator  
District 37

Vote for 1

- Adelaide "Addie" Eckardt Unopposed

House of Delegates  
District 37A

Vote for 1

- Frank E. Cooke Unopposed

County Executive

Vote for 1

- Bob Culver Unopposed

Vote Both Sides





<b>County Council At Large</b> <b>Vote for up to 2</b>
<input type="radio"/> <b>Julie D. Brewington</b> Unopposed
<input type="radio"/> <b>John T. Cannon</b> Unopposed

<b>Sheriff</b> <b>Vote for 1</b>
<input type="radio"/> <b>Mike Lewis</b> Unopposed

<b>County Council District 3</b> <b>Vote for 1</b>
<input type="radio"/> <b>Larry W. Dodd</b> Unopposed

<b>Republican Central Committee</b> <b>Vote for up to 9</b>
<input type="radio"/> <b>Wendy Anspacher</b>
<input type="radio"/> <b>Muir Boda</b>
<input type="radio"/> <b>Shawn A. Bradley</b>
<input type="radio"/> <b>Julie D. Brewington</b>
<input type="radio"/> <b>Larry W. Dodd</b>
<input type="radio"/> <b>Joan Frances Gentile</b>
<input type="radio"/> <b>David L. Goslee, Sr.</b>
<input type="radio"/> <b>Jim Jester</b>
<input type="radio"/> <b>Linda Raye Luffman</b>
<input type="radio"/> <b>Mark G. McIver</b>
<input type="radio"/> <b>John Palmer</b>
<input type="radio"/> <b>Nate Sansom</b>
<input type="radio"/> <b>David Louis Snyder</b>

<b>Judge of the Circuit Court Circuit 1</b> <b>Vote for up to 2</b>
<input type="radio"/> <b>Kathleen L. Beckstead</b> Unopposed
<input type="radio"/> <b>Matthew A. Maciarelo</b> Unopposed

<b>State's Attorney</b> <b>Vote for 1</b>
<input type="radio"/> <b>Jamie Dykes</b> Unopposed

<b>Clerk of the Circuit Court</b> <b>Vote for 1</b>
<input type="radio"/> <b>Shawn A. Bradley</b>
<input type="radio"/> <b>Christopher S. Welch</b>

<b>Judge of the Orphans' Court</b> <b>Vote for up to 3</b>
<input type="radio"/> <b>Grover Green Cantwell, Jr.</b> Unopposed
<b>Nomination Vacant</b>
<b>Nomination Vacant</b>

<b>End of Ballot</b> 
---



Official Ballot  
2018 Gubernatorial Primary Election  
June 26, 2018

BS REP 7

State of Maryland, Wicomico County  
Republican Ballot

Instructions

Making Selections



Fill in the oval to the left of the name of your choice. You must blacken the oval completely, and do not make any marks outside of the oval. You do not have to vote in every race.



Do not cross out or erase, or your vote may not count. If you make a mistake or a stray mark, you may ask for a new ballot.

Governor / Lt. Governor  
Vote for 1

- Larry Hogan and Boyd K. Rutherford Unopposed

Comptroller  
Vote for 1

- Anjali Reed Phukan Unopposed

Attorney General  
Vote for 1

- Craig Wolf Unopposed

U.S. Senator  
Vote for 1

- Tony Campbell
- Chris Chaffee
- Evan M. Cronhardt
- Nnabu Eze
- John R. Graziani
- Christina J. Grigorian
- Albert Binyahmin Howard
- Bill Krehnbrink
- Gerald I. Smith, Jr.
- Blaine Taylor
- Brian Charles Vaeth

Representative in Congress  
District 1

Vote for 1

- Martin Elborn
- Andy Harris
- Lamont Taylor

State Senator  
District 38

Vote for 1

- Mary Beth Carozza Unopposed

House of Delegates  
District 38B

Vote for 1

- Carl Anderton, Jr. Unopposed

County Executive

Vote for 1

- Bob Culver Unopposed

Vote Both Sides





<b>County Council At Large</b> <b>Vote for up to 2</b>
<input type="radio"/> <b>Julie D. Brewington</b> Unopposed
<input type="radio"/> <b>John T. Cannon</b> Unopposed

<b>Sheriff</b> <b>Vote for 1</b>
<input type="radio"/> <b>Mike Lewis</b> Unopposed

<b>County Council District 3</b> <b>Vote for 1</b>
<input type="radio"/> <b>Larry W. Dodd</b> Unopposed

<b>Republican Central Committee</b> <b>Vote for up to 9</b>
<input type="radio"/> <b>Wendy Anspacher</b>
<input type="radio"/> <b>Muir Boda</b>
<input type="radio"/> <b>Shawn A. Bradley</b>
<input type="radio"/> <b>Julie D. Brewington</b>
<input type="radio"/> <b>Larry W. Dodd</b>
<input type="radio"/> <b>Joan Frances Gentile</b>
<input type="radio"/> <b>David L. Goslee, Sr.</b>
<input type="radio"/> <b>Jim Jester</b>
<input type="radio"/> <b>Linda Raye Luffman</b>
<input type="radio"/> <b>Mark G. McIver</b>
<input type="radio"/> <b>John Palmer</b>
<input type="radio"/> <b>Nate Sansom</b>
<input type="radio"/> <b>David Louis Snyder</b>

<b>Judge of the Circuit Court Circuit 1</b> <b>Vote for up to 2</b>
<input type="radio"/> <b>Kathleen L. Beckstead</b> Unopposed
<input type="radio"/> <b>Matthew A. Maciarelo</b> Unopposed

<b>State's Attorney</b> <b>Vote for 1</b>
<input type="radio"/> <b>Jamie Dykes</b> Unopposed

<b>Clerk of the Circuit Court</b> <b>Vote for 1</b>
<input type="radio"/> <b>Shawn A. Bradley</b>
<input type="radio"/> <b>Christopher S. Welch</b>

<b>Judge of the Orphans' Court</b> <b>Vote for up to 3</b>
<input type="radio"/> <b>Grover Green Cantwell, Jr.</b> Unopposed
<b>Nomination Vacant</b>
<b>Nomination Vacant</b>

<b>End of Ballot</b> 
---



Official Ballot  
2018 Gubernatorial Primary Election  
June 26, 2018

BS REP 8

State of Maryland, Wicomico County  
Republican Ballot

Instructions

Making Selections



Fill in the oval to the left of the name of your choice. You must blacken the oval completely, and do not make any marks outside of the oval. You do not have to vote in every race.



Do not cross out or erase, or your vote may not count. If you make a mistake or a stray mark, you may ask for a new ballot.

Governor / Lt. Governor  
Vote for 1

- Larry Hogan and Boyd K. Rutherford Unopposed

Comptroller  
Vote for 1

- Anjali Reed Phukan Unopposed

Attorney General  
Vote for 1

- Craig Wolf Unopposed

U.S. Senator  
Vote for 1

- Tony Campbell
- Chris Chaffee
- Evan M. Cronhardt
- Nnabu Eze
- John R. Graziani
- Christina J. Grigorian
- Albert Binyahmin Howard
- Bill Krehnbrink
- Gerald I. Smith, Jr.
- Blaine Taylor
- Brian Charles Vaeth

Representative in Congress  
District 1

Vote for 1

- Martin Elborn
- Andy Harris
- Lamont Taylor

State Senator  
District 38

Vote for 1

- Mary Beth Carozza Unopposed

House of Delegates  
District 38B

Vote for 1

- Carl Anderton, Jr. Unopposed

County Executive

Vote for 1

- Bob Culver Unopposed

Vote Both Sides





<b>County Council At Large</b> <b>Vote for up to 2</b>
<input type="radio"/> <b>Julie D. Brewington</b> Unopposed
<input type="radio"/> <b>John T. Cannon</b> Unopposed

<b>Sheriff</b> <b>Vote for 1</b>
<input type="radio"/> <b>Mike Lewis</b> Unopposed

<b>County Council District 5</b> <b>Vote for 1</b>
<input type="radio"/> <b>Joe Holloway</b> Unopposed

<b>Republican Central Committee</b> <b>Vote for up to 9</b>
<input type="radio"/> <b>Wendy Anspacher</b>
<input type="radio"/> <b>Muir Boda</b>
<input type="radio"/> <b>Shawn A. Bradley</b>
<input type="radio"/> <b>Julie D. Brewington</b>
<input type="radio"/> <b>Larry W. Dodd</b>
<input type="radio"/> <b>Joan Frances Gentile</b>
<input type="radio"/> <b>David L. Goslee, Sr.</b>
<input type="radio"/> <b>Jim Jester</b>
<input type="radio"/> <b>Linda Raye Luffman</b>
<input type="radio"/> <b>Mark G. McIver</b>
<input type="radio"/> <b>John Palmer</b>
<input type="radio"/> <b>Nate Sansom</b>
<input type="radio"/> <b>David Louis Snyder</b>

<b>Judge of the Circuit Court Circuit 1</b> <b>Vote for up to 2</b>
<input type="radio"/> <b>Kathleen L. Beckstead</b> Unopposed
<input type="radio"/> <b>Matthew A. Maciarelo</b> Unopposed

<b>State's Attorney</b> <b>Vote for 1</b>
<input type="radio"/> <b>Jamie Dykes</b> Unopposed

<b>Clerk of the Circuit Court</b> <b>Vote for 1</b>
<input type="radio"/> <b>Shawn A. Bradley</b>
<input type="radio"/> <b>Christopher S. Welch</b>

<b>Judge of the Orphans' Court</b> <b>Vote for up to 3</b>
<input type="radio"/> <b>Grover Green Cantwell, Jr.</b> Unopposed
<b>Nomination Vacant</b>
<b>Nomination Vacant</b>

<b>End of Ballot</b> 
---





Official Ballot  
2018 Gubernatorial Primary Election  
June 26, 2018

BS REP 9

State of Maryland, Wicomico County  
Republican Ballot

Instructions

Making Selections



Fill in the oval to the left of the name of your choice. You must blacken the oval completely, and do not make any marks outside of the oval. You do not have to vote in every race.



Do not cross out or erase, or your vote may not count. If you make a mistake or a stray mark, you may ask for a new ballot.

Governor / Lt. Governor  
Vote for 1

- Larry Hogan and Boyd K. Rutherford Unopposed

Comptroller  
Vote for 1

- Anjali Reed Phukan Unopposed

Attorney General  
Vote for 1

- Craig Wolf Unopposed

U.S. Senator  
Vote for 1

- Tony Campbell
- Chris Chaffee
- Evan M. Cronhardt
- Nnabu Eze
- John R. Graziani
- Christina J. Grigorian
- Albert Binyahmin Howard
- Bill Krehnbrink
- Gerald I. Smith, Jr.
- Blaine Taylor
- Brian Charles Vaeth

Representative in Congress  
District 1

Vote for 1

- Martin Elborn
- Andy Harris
- Lamont Taylor

State Senator  
District 38

Vote for 1

- Mary Beth Carozza Unopposed

House of Delegates  
District 38C

Vote for 1

- Wayne A. Hartman
- Joe Schanno
- Jim Shaffer
- Ed Tinus

County Executive  
Vote for 1

- Bob Culver Unopposed

Vote Both Sides





<b>County Council At Large</b> <b>Vote for up to 2</b>
<input type="radio"/> <b>Julie D. Brewington</b> Unopposed
<input type="radio"/> <b>John T. Cannon</b> Unopposed

<b>Sheriff</b> <b>Vote for 1</b>
<input type="radio"/> <b>Mike Lewis</b> Unopposed

<b>County Council District 5</b> <b>Vote for 1</b>
<input type="radio"/> <b>Joe Holloway</b> Unopposed

<b>Republican Central Committee</b> <b>Vote for up to 9</b>
<input type="radio"/> <b>Wendy Anspacher</b>
<input type="radio"/> <b>Muir Boda</b>
<input type="radio"/> <b>Shawn A. Bradley</b>
<input type="radio"/> <b>Julie D. Brewington</b>
<input type="radio"/> <b>Larry W. Dodd</b>
<input type="radio"/> <b>Joan Frances Gentile</b>
<input type="radio"/> <b>David L. Goslee, Sr.</b>
<input type="radio"/> <b>Jim Jester</b>
<input type="radio"/> <b>Linda Raye Luffman</b>
<input type="radio"/> <b>Mark G. McIver</b>
<input type="radio"/> <b>John Palmer</b>
<input type="radio"/> <b>Nate Sansom</b>
<input type="radio"/> <b>David Louis Snyder</b>

<b>Judge of the Circuit Court Circuit 1</b> <b>Vote for up to 2</b>
<input type="radio"/> <b>Kathleen L. Beckstead</b> Unopposed
<input type="radio"/> <b>Matthew A. Maciarelo</b> Unopposed

<b>State's Attorney</b> <b>Vote for 1</b>
<input type="radio"/> <b>Jamie Dykes</b> Unopposed

<b>Clerk of the Circuit Court</b> <b>Vote for 1</b>
<input type="radio"/> <b>Shawn A. Bradley</b>
<input type="radio"/> <b>Christopher S. Welch</b>

<b>Judge of the Orphans' Court</b> <b>Vote for up to 3</b>
<input type="radio"/> <b>Grover Green Cantwell, Jr.</b> Unopposed
<b>Nomination Vacant</b>
<b>Nomination Vacant</b>

<b>End of Ballot</b> 
---



Official Ballot  
2018 Gubernatorial Primary Election  
June 26, 2018

**BS REP 10**

State of Maryland, Wicomico County  
Republican Ballot

**Instructions**

**Making Selections**



Fill in the oval to the left of the name of your choice. You must blacken the oval completely, and do not make any marks outside of the oval. You do not have to vote in every race.



Do not cross out or erase, or your vote may not count. If you make a mistake or a stray mark, you may ask for a new ballot.

**Governor / Lt. Governor**  
Vote for 1

- Larry Hogan and Boyd K. Rutherford  
Unopposed

**Comptroller**  
Vote for 1

- Anjali Reed Phukan  
Unopposed

**Attorney General**  
Vote for 1

- Craig Wolf  
Unopposed

**U.S. Senator**  
Vote for 1

- Tony Campbell
- Chris Chaffee
- Evan M. Cronhardt
- Nnabu Eze
- John R. Graziani
- Christina J. Grigorian
- Albert Binyahmin Howard
- Bill Krehnbrink
- Gerald I. Smith, Jr.
- Blaine Taylor
- Brian Charles Vaeth

**Representative in Congress**  
District 1

Vote for 1

- Martin Elborn
- Andy Harris
- Lamont Taylor

**State Senator**  
District 37

Vote for 1

- Adelaide "Addie" Eckardt  
Unopposed

**House of Delegates**  
District 37B

Vote for up to 2

- Christopher T. Adams
- Mimi Gedamu
- Keith Graffius
- Johnny Mautz

**County Executive**  
Vote for 1

- Bob Culver  
Unopposed

Vote Both Sides





<b>County Council At Large</b> <b>Vote for up to 2</b>
<input type="radio"/> <b>Julie D. Brewington</b> Unopposed
<input type="radio"/> <b>John T. Cannon</b> Unopposed

<b>Sheriff</b> <b>Vote for 1</b>
<input type="radio"/> <b>Mike Lewis</b> Unopposed

<b>County Council District 3</b> <b>Vote for 1</b>
<input type="radio"/> <b>Larry W. Dodd</b> Unopposed

<b>Republican Central Committee</b> <b>Vote for up to 9</b>
<input type="radio"/> <b>Wendy Anspacher</b>
<input type="radio"/> <b>Muir Boda</b>
<input type="radio"/> <b>Shawn A. Bradley</b>
<input type="radio"/> <b>Julie D. Brewington</b>
<input type="radio"/> <b>Larry W. Dodd</b>
<input type="radio"/> <b>Joan Frances Gentile</b>
<input type="radio"/> <b>David L. Goslee, Sr.</b>
<input type="radio"/> <b>Jim Jester</b>
<input type="radio"/> <b>Linda Raye Luffman</b>
<input type="radio"/> <b>Mark G. McIver</b>
<input type="radio"/> <b>John Palmer</b>
<input type="radio"/> <b>Nate Sansom</b>
<input type="radio"/> <b>David Louis Snyder</b>

<b>Judge of the Circuit Court Circuit 1</b> <b>Vote for up to 2</b>
<input type="radio"/> <b>Kathleen L. Beckstead</b> Unopposed
<input type="radio"/> <b>Matthew A. Maciarelo</b> Unopposed

<b>State's Attorney</b> <b>Vote for 1</b>
<input type="radio"/> <b>Jamie Dykes</b> Unopposed

<b>Clerk of the Circuit Court</b> <b>Vote for 1</b>
<input type="radio"/> <b>Shawn A. Bradley</b>
<input type="radio"/> <b>Christopher S. Welch</b>

<b>Judge of the Orphans' Court</b> <b>Vote for up to 3</b>
<input type="radio"/> <b>Grover Green Cantwell, Jr.</b> Unopposed
<b>Nomination Vacant</b>
<b>Nomination Vacant</b>

<b>End of Ballot</b> 
---



Official Ballot  
2018 Gubernatorial Primary Election  
June 26, 2018

**BS REP 11**

State of Maryland, Wicomico County  
Republican Ballot

**Instructions**

**Making Selections**



Fill in the oval to the left of the name of your choice. You must blacken the oval completely, and do not make any marks outside of the oval. You do not have to vote in every race.



Do not cross out or erase, or your vote may not count. If you make a mistake or a stray mark, you may ask for a new ballot.

**Governor / Lt. Governor**  
Vote for 1

- Larry Hogan**  
and  
**Boyd K. Rutherford**  
Unopposed

**Comptroller**  
Vote for 1

- Anjali Reed Phukan**  
Unopposed

**Attorney General**  
Vote for 1

- Craig Wolf**  
Unopposed

**U.S. Senator**  
Vote for 1

- Tony Campbell**
- Chris Chaffee**
- Evan M. Cronhardt**
- Nnabu Eze**
- John R. Graziani**
- Christina J. Grigorian**
- Albert Binyahmin Howard**
- Bill Krehnbrink**
- Gerald I. Smith, Jr.**
- Blaine Taylor**
- Brian Charles Vaeth**

**Representative in Congress**  
District 1

Vote for 1

- Martin Elborn**
- Andy Harris**
- Lamont Taylor**

**State Senator**  
District 37

Vote for 1

- Adelaide "Addie" Eckardt**  
Unopposed

**House of Delegates**  
District 37B

Vote for up to 2

- Christopher T. Adams**
- Mimi Gedamu**
- Keith Graffius**
- Johnny Mautz**

**County Executive**  
Vote for 1

- Bob Culver**  
Unopposed

Vote Both Sides





<b>County Council At Large</b> <b>Vote for up to 2</b>
<input type="radio"/> <b>Julie D. Brewington</b> Unopposed
<input type="radio"/> <b>John T. Cannon</b> Unopposed

<b>Sheriff</b> <b>Vote for 1</b>
<input type="radio"/> <b>Mike Lewis</b> Unopposed

<b>County Council District 4</b> <b>Vote for 1</b>
<input type="radio"/> <b>Suzannah Cain</b> Unopposed

<b>Republican Central Committee</b> <b>Vote for up to 9</b>
<input type="radio"/> <b>Wendy Anspacher</b>
<input type="radio"/> <b>Muir Boda</b>
<input type="radio"/> <b>Shawn A. Bradley</b>
<input type="radio"/> <b>Julie D. Brewington</b>
<input type="radio"/> <b>Larry W. Dodd</b>
<input type="radio"/> <b>Joan Frances Gentile</b>
<input type="radio"/> <b>David L. Goslee, Sr.</b>
<input type="radio"/> <b>Jim Jester</b>
<input type="radio"/> <b>Linda Raye Luffman</b>
<input type="radio"/> <b>Mark G. McIver</b>
<input type="radio"/> <b>John Palmer</b>
<input type="radio"/> <b>Nate Sansom</b>
<input type="radio"/> <b>David Louis Snyder</b>

<b>Judge of the Circuit Court Circuit 1</b> <b>Vote for up to 2</b>
<input type="radio"/> <b>Kathleen L. Beckstead</b> Unopposed
<input type="radio"/> <b>Matthew A. Maciarelo</b> Unopposed

<b>State's Attorney</b> <b>Vote for 1</b>
<input type="radio"/> <b>Jamie Dykes</b> Unopposed

<b>Board of Education District 4</b> <b>Vote for 1</b>
<input type="radio"/> <b>Seamus Benn</b>
<input type="radio"/> <b>David Plotts</b>
<input type="radio"/> <b>Ann Brittingham Suthowski</b>

<b>Clerk of the Circuit Court</b> <b>Vote for 1</b>
<input type="radio"/> <b>Shawn A. Bradley</b>
<input type="radio"/> <b>Christopher S. Welch</b>

<b>Judge of the Orphans' Court</b> <b>Vote for up to 3</b>
<input type="radio"/> <b>Grover Green Cantwell, Jr.</b> Unopposed
<b>Nomination Vacant</b>
<b>Nomination Vacant</b>

<b>End of Ballot</b> 
---



Official Ballot  
2018 Gubernatorial Primary Election  
June 26, 2018

BS REP 12

State of Maryland, Wicomico County  
Republican Ballot

Instructions

Making Selections



Fill in the oval to the left of the name of your choice. You must blacken the oval completely, and do not make any marks outside of the oval. You do not have to vote in every race.



Do not cross out or erase, or your vote may not count. If you make a mistake or a stray mark, you may ask for a new ballot.

Governor / Lt. Governor  
Vote for 1

- Larry Hogan and Boyd K. Rutherford  
Unopposed

Comptroller  
Vote for 1

- Anjali Reed Phukan  
Unopposed

Attorney General  
Vote for 1

- Craig Wolf  
Unopposed

U.S. Senator  
Vote for 1

- Tony Campbell
- Chris Chaffee
- Evan M. Cronhardt
- Nnabu Eze
- John R. Graziani
- Christina J. Grigorian
- Albert Binyahmin Howard
- Bill Krehnbrink
- Gerald I. Smith, Jr.
- Blaine Taylor
- Brian Charles Vaeth

Representative in Congress  
District 1

Vote for 1

- Martin Elborn
- Andy Harris
- Lamont Taylor

State Senator  
District 38

Vote for 1

- Mary Beth Carozza  
Unopposed

House of Delegates  
District 38B

Vote for 1

- Carl Anderton, Jr.  
Unopposed

County Executive

Vote for 1

- Bob Culver  
Unopposed

Vote Both Sides





<b>County Council At Large</b> <b>Vote for up to 2</b>
<input type="radio"/> <b>Julie D. Brewington</b> Unopposed
<input type="radio"/> <b>John T. Cannon</b> Unopposed

<b>Sheriff</b> <b>Vote for 1</b>
<input type="radio"/> <b>Mike Lewis</b> Unopposed

<b>County Council District 4</b> <b>Vote for 1</b>
<input type="radio"/> <b>Suzannah Cain</b> Unopposed

<b>Republican Central Committee</b> <b>Vote for up to 9</b>
<input type="radio"/> <b>Wendy Anspacher</b>
<input type="radio"/> <b>Muir Boda</b>
<input type="radio"/> <b>Shawn A. Bradley</b>
<input type="radio"/> <b>Julie D. Brewington</b>
<input type="radio"/> <b>Larry W. Dodd</b>
<input type="radio"/> <b>Joan Frances Gentile</b>
<input type="radio"/> <b>David L. Goslee, Sr.</b>
<input type="radio"/> <b>Jim Jester</b>
<input type="radio"/> <b>Linda Raye Luffman</b>
<input type="radio"/> <b>Mark G. McIver</b>
<input type="radio"/> <b>John Palmer</b>
<input type="radio"/> <b>Nate Sansom</b>
<input type="radio"/> <b>David Louis Snyder</b>

<b>Judge of the Circuit Court Circuit 1</b> <b>Vote for up to 2</b>
<input type="radio"/> <b>Kathleen L. Beckstead</b> Unopposed
<input type="radio"/> <b>Matthew A. Maciarelo</b> Unopposed

<b>State's Attorney</b> <b>Vote for 1</b>
<input type="radio"/> <b>Jamie Dykes</b> Unopposed

<b>Board of Education District 4</b> <b>Vote for 1</b>
<input type="radio"/> <b>Seamus Benn</b>
<input type="radio"/> <b>David Plotts</b>
<input type="radio"/> <b>Ann Brittingham Suthowski</b>

<b>Clerk of the Circuit Court</b> <b>Vote for 1</b>
<input type="radio"/> <b>Shawn A. Bradley</b>
<input type="radio"/> <b>Christopher S. Welch</b>

<b>Judge of the Orphans' Court</b> <b>Vote for up to 3</b>
<input type="radio"/> <b>Grover Green Cantwell, Jr.</b> Unopposed
<b>Nomination Vacant</b>
<b>Nomination Vacant</b>

<b>End of Ballot</b> 
---





Official Ballot  
2018 Gubernatorial Primary Election  
June 26, 2018

BS REP 13

State of Maryland, Wicomico County  
Republican Ballot

Instructions

Making Selections



Fill in the oval to the left of the name of your choice. You must blacken the oval completely, and do not make any marks outside of the oval. You do not have to vote in every race.



Do not cross out or erase, or your vote may not count. If you make a mistake or a stray mark, you may ask for a new ballot.

Governor / Lt. Governor  
Vote for 1

- Larry Hogan and Boyd K. Rutherford Unopposed

Comptroller  
Vote for 1

- Anjali Reed Phukan Unopposed

Attorney General  
Vote for 1

- Craig Wolf Unopposed

U.S. Senator  
Vote for 1

- Tony Campbell
- Chris Chaffee
- Evan M. Cronhardt
- Nnabu Eze
- John R. Graziani
- Christina J. Grigorian
- Albert Binyahmin Howard
- Bill Krehnbrink
- Gerald I. Smith, Jr.
- Blaine Taylor
- Brian Charles Vaeth

Representative in Congress  
District 1

Vote for 1

- Martin Elborn
- Andy Harris
- Lamont Taylor

State Senator  
District 38

Vote for 1

- Mary Beth Carozza Unopposed

House of Delegates  
District 38B

Vote for 1

- Carl Anderton, Jr. Unopposed

County Executive

Vote for 1

- Bob Culver Unopposed

Vote Both Sides





<b>County Council At Large</b> <b>Vote for up to 2</b>
<input type="radio"/> <b>Julie D. Brewington</b> Unopposed
<input type="radio"/> <b>John T. Cannon</b> Unopposed

<b>Judge of the Circuit Court</b> <b>Circuit 1</b> <b>Vote for up to 2</b>
<input type="radio"/> <b>Kathleen L. Beckstead</b> Unopposed
<input type="radio"/> <b>Matthew A. Maciarelo</b> Unopposed

<b>State's Attorney</b> <b>Vote for 1</b>
<input type="radio"/> <b>Jamie Dykes</b> Unopposed


<b>Clerk of the Circuit Court</b> <b>Vote for 1</b>
<input type="radio"/> <b>Shawn A. Bradley</b>
<input type="radio"/> <b>Christopher S. Welch</b>

<b>Judge of the Orphans' Court</b> <b>Vote for up to 3</b>
<input type="radio"/> <b>Grover Green Cantwell, Jr.</b> Unopposed
<b>Nomination Vacant</b>
<b>Nomination Vacant</b>

<b>Sheriff</b> <b>Vote for 1</b>
<input type="radio"/> <b>Mike Lewis</b> Unopposed

<b>Republican Central</b> <b>Committee</b> <b>Vote for up to 9</b>
<input type="radio"/> <b>Wendy Anspacher</b>
<input type="radio"/> <b>Muir Boda</b>
<input type="radio"/> <b>Shawn A. Bradley</b>
<input type="radio"/> <b>Julie D. Brewington</b>
<input type="radio"/> <b>Larry W. Dodd</b>
<input type="radio"/> <b>Joan Frances Gentile</b>
<input type="radio"/> <b>David L. Goslee, Sr.</b>
<input type="radio"/> <b>Jim Jester</b>
<input type="radio"/> <b>Linda Raye Luffman</b>
<input type="radio"/> <b>Mark G. McIver</b>
<input type="radio"/> <b>John Palmer</b>
<input type="radio"/> <b>Nate Sansom</b>
<input type="radio"/> <b>David Louis Snyder</b>

<b>Board of Education</b> <b>District 1</b> <b>Vote for 1</b>
<input type="radio"/> <b>Ruth Angelot</b>
<input type="radio"/> <b>Michelle Bradley</b>
<input type="radio"/> <b>Allen C. Brown</b>

<b>End of Ballot</b> 
---



Official Ballot  
2018 Gubernatorial Primary Election  
June 26, 2018

**BS REP 14**

State of Maryland, Wicomico County  
Republican Ballot

**Instructions**

**Making Selections**



Fill in the oval to the left of the name of your choice. You must blacken the oval completely, and do not make any marks outside of the oval. You do not have to vote in every race.



Do not cross out or erase, or your vote may not count. If you make a mistake or a stray mark, you may ask for a new ballot.

**Governor / Lt. Governor**  
Vote for 1

- Larry Hogan**  
and  
**Boyd K. Rutherford**  
Unopposed

**Comptroller**  
Vote for 1

- Anjali Reed Phukan**  
Unopposed

**Attorney General**  
Vote for 1

- Craig Wolf**  
Unopposed

**U.S. Senator**  
Vote for 1

- Tony Campbell**
- Chris Chaffee**
- Evan M. Cronhardt**
- Nnabu Eze**
- John R. Graziani**
- Christina J. Grigorian**
- Albert Binyahmin Howard**
- Bill Krehnbrink**
- Gerald I. Smith, Jr.**
- Blaine Taylor**
- Brian Charles Vaeth**

**Representative in Congress**  
District 1

Vote for 1

- Martin Elborn**
- Andy Harris**
- Lamont Taylor**

**State Senator**  
District 38

Vote for 1

- Mary Beth Carozza**  
Unopposed

**House of Delegates**  
District 38B

Vote for 1

- Carl Anderton, Jr.**  
Unopposed

**County Executive**

Vote for 1

- Bob Culver**  
Unopposed

Vote Both Sides





<b>County Council At Large</b> <b>Vote for up to 2</b>
<input type="radio"/> <b>Julie D. Brewington</b> Unopposed
<input type="radio"/> <b>John T. Cannon</b> Unopposed

<b>Sheriff</b> <b>Vote for 1</b>
<input type="radio"/> <b>Mike Lewis</b> Unopposed

<b>County Council District 2</b> <b>Vote for 1</b>
<input type="radio"/> <b>Marc Kilmer</b> Unopposed

<b>Republican Central Committee</b> <b>Vote for up to 9</b>
<input type="radio"/> <b>Wendy Anspacher</b>
<input type="radio"/> <b>Muir Boda</b>
<input type="radio"/> <b>Shawn A. Bradley</b>
<input type="radio"/> <b>Julie D. Brewington</b>
<input type="radio"/> <b>Larry W. Dodd</b>
<input type="radio"/> <b>Joan Frances Gentile</b>
<input type="radio"/> <b>David L. Goslee, Sr.</b>
<input type="radio"/> <b>Jim Jester</b>
<input type="radio"/> <b>Linda Raye Luffman</b>
<input type="radio"/> <b>Mark G. McIver</b>
<input type="radio"/> <b>John Palmer</b>
<input type="radio"/> <b>Nate Sansom</b>
<input type="radio"/> <b>David Louis Snyder</b>

<b>Judge of the Circuit Court Circuit 1</b> <b>Vote for up to 2</b>
<input type="radio"/> <b>Kathleen L. Beckstead</b> Unopposed
<input type="radio"/> <b>Matthew A. Maciarelo</b> Unopposed

<b>State's Attorney</b> <b>Vote for 1</b>
<input type="radio"/> <b>Jamie Dykes</b> Unopposed

<b>Clerk of the Circuit Court</b> <b>Vote for 1</b>
<input type="radio"/> <b>Shawn A. Bradley</b>
<input type="radio"/> <b>Christopher S. Welch</b>

<b>Judge of the Orphans' Court</b> <b>Vote for up to 3</b>
<input type="radio"/> <b>Grover Green Cantwell, Jr.</b> Unopposed
<b>Nomination Vacant</b>
<b>Nomination Vacant</b>

<b>End of Ballot</b> 
---



Official Ballot  
2018 Gubernatorial Primary Election  
June 26, 2018

BS REP 15

State of Maryland, Wicomico County  
Republican Ballot

Instructions

Making Selections



Fill in the oval to the left of the name of your choice. You must blacken the oval completely, and do not make any marks outside of the oval. You do not have to vote in every race.



Do not cross out or erase, or your vote may not count. If you make a mistake or a stray mark, you may ask for a new ballot.

Governor / Lt. Governor  
Vote for 1

- Larry Hogan and Boyd K. Rutherford Unopposed

Comptroller  
Vote for 1

- Anjali Reed Phukan Unopposed

Attorney General  
Vote for 1

- Craig Wolf Unopposed

U.S. Senator  
Vote for 1

- Tony Campbell
- Chris Chaffee
- Evan M. Cronhardt
- Nnabu Eze
- John R. Graziani
- Christina J. Grigorian
- Albert Binyahmin Howard
- Bill Krehnbrink
- Gerald I. Smith, Jr.
- Blaine Taylor
- Brian Charles Vaeth

Representative in Congress  
District 1

Vote for 1

- Martin Elborn
- Andy Harris
- Lamont Taylor

State Senator  
District 37

Vote for 1

- Adelaide "Addie" Eckardt Unopposed

House of Delegates  
District 37A

Vote for 1

- Frank E. Cooke Unopposed

County Executive

Vote for 1

- Bob Culver Unopposed

Vote Both Sides





<b>County Council At Large</b> <b>Vote for up to 2</b>
<input type="radio"/> <b>Julie D. Brewington</b> Unopposed
<input type="radio"/> <b>John T. Cannon</b> Unopposed

<b>Judge of the Circuit Court</b> <b>Circuit 1</b> <b>Vote for up to 2</b>
<input type="radio"/> <b>Kathleen L. Beckstead</b> Unopposed
<input type="radio"/> <b>Matthew A. Maciarelo</b> Unopposed

<b>State's Attorney</b> <b>Vote for 1</b>
<input type="radio"/> <b>Jamie Dykes</b> Unopposed

<b>Clerk of the Circuit Court</b> <b>Vote for 1</b>
<input type="radio"/> <b>Shawn A. Bradley</b>
<input type="radio"/> <b>Christopher S. Welch</b>

<b>Judge of the Orphans' Court</b> <b>Vote for up to 3</b>
<input type="radio"/> <b>Grover Green Cantwell, Jr.</b> Unopposed
<b>Nomination Vacant</b>
<b>Nomination Vacant</b>

<b>Sheriff</b> <b>Vote for 1</b>
<input type="radio"/> <b>Mike Lewis</b> Unopposed

<b>Republican Central</b> <b>Committee</b> <b>Vote for up to 9</b>
<input type="radio"/> <b>Wendy Anspacher</b>
<input type="radio"/> <b>Muir Boda</b>
<input type="radio"/> <b>Shawn A. Bradley</b>
<input type="radio"/> <b>Julie D. Brewington</b>
<input type="radio"/> <b>Larry W. Dodd</b>
<input type="radio"/> <b>Joan Frances Gentile</b>
<input type="radio"/> <b>David L. Goslee, Sr.</b>
<input type="radio"/> <b>Jim Jester</b>
<input type="radio"/> <b>Linda Raye Luffman</b>
<input type="radio"/> <b>Mark G. McIver</b>
<input type="radio"/> <b>John Palmer</b>
<input type="radio"/> <b>Nate Sansom</b>
<input type="radio"/> <b>David Louis Snyder</b>

<b>Board of Education</b> <b>District 1</b> <b>Vote for 1</b>
<input type="radio"/> <b>Ruth Angelot</b>
<input type="radio"/> <b>Michelle Bradley</b>
<input type="radio"/> <b>Allen C. Brown</b>

<b>End of Ballot</b> 
---



Official Ballot  
2018 Gubernatorial Primary Election  
June 26, 2018

BS REP 16

State of Maryland, Wicomico County  
Republican Ballot

Instructions

Making Selections



Fill in the oval to the left of the name of your choice. You must blacken the oval completely, and do not make any marks outside of the oval. You do not have to vote in every race.



Do not cross out or erase, or your vote may not count. If you make a mistake or a stray mark, you may ask for a new ballot.

Governor / Lt. Governor  
Vote for 1

- Larry Hogan and Boyd K. Rutherford Unopposed

Comptroller  
Vote for 1

- Anjali Reed Phukan Unopposed

Attorney General  
Vote for 1

- Craig Wolf Unopposed

U.S. Senator  
Vote for 1

- Tony Campbell
- Chris Chaffee
- Evan M. Cronhardt
- Nnabu Eze
- John R. Graziani
- Christina J. Grigorian
- Albert Binyahmin Howard
- Bill Krehnbrink
- Gerald I. Smith, Jr.
- Blaine Taylor
- Brian Charles Vaeth

Representative in Congress  
District 1

Vote for 1

- Martin Elborn
- Andy Harris
- Lamont Taylor

State Senator  
District 37

Vote for 1

- Adelaide "Addie" Eckardt Unopposed

House of Delegates  
District 37A

Vote for 1

- Frank E. Cooke Unopposed

County Executive

Vote for 1

- Bob Culver Unopposed

Vote Both Sides





<b>County Council At Large</b> <b>Vote for up to 2</b>
<input type="radio"/> <b>Julie D. Brewington</b> Unopposed
<input type="radio"/> <b>John T. Cannon</b> Unopposed

<b>Sheriff</b> <b>Vote for 1</b>
<input type="radio"/> <b>Mike Lewis</b> Unopposed

<b>County Council District 5</b> <b>Vote for 1</b>
<input type="radio"/> <b>Joe Holloway</b> Unopposed

<b>Republican Central Committee</b> <b>Vote for up to 9</b>
<input type="radio"/> <b>Wendy Anspacher</b>
<input type="radio"/> <b>Muir Boda</b>
<input type="radio"/> <b>Shawn A. Bradley</b>
<input type="radio"/> <b>Julie D. Brewington</b>
<input type="radio"/> <b>Larry W. Dodd</b>
<input type="radio"/> <b>Joan Frances Gentile</b>
<input type="radio"/> <b>David L. Goslee, Sr.</b>
<input type="radio"/> <b>Jim Jester</b>
<input type="radio"/> <b>Linda Raye Luffman</b>
<input type="radio"/> <b>Mark G. McIver</b>
<input type="radio"/> <b>John Palmer</b>
<input type="radio"/> <b>Nate Sansom</b>
<input type="radio"/> <b>David Louis Snyder</b>

<b>Judge of the Circuit Court Circuit 1</b> <b>Vote for up to 2</b>
<input type="radio"/> <b>Kathleen L. Beckstead</b> Unopposed
<input type="radio"/> <b>Matthew A. Maciarelo</b> Unopposed

<b>State's Attorney</b> <b>Vote for 1</b>
<input type="radio"/> <b>Jamie Dykes</b> Unopposed

<b>Clerk of the Circuit Court</b> <b>Vote for 1</b>
<input type="radio"/> <b>Shawn A. Bradley</b>
<input type="radio"/> <b>Christopher S. Welch</b>

<b>Judge of the Orphans' Court</b> <b>Vote for up to 3</b>
<input type="radio"/> <b>Grover Green Cantwell, Jr.</b> Unopposed
<b>Nomination Vacant</b>
<b>Nomination Vacant</b>

<b>End of Ballot</b> 
---





Official Ballot  
2018 Gubernatorial Primary Election  
June 26, 2018

BS REP 17

State of Maryland, Wicomico County  
Republican Ballot

Instructions

Making Selections



Fill in the oval to the left of the name of your choice. You must blacken the oval completely, and do not make any marks outside of the oval. You do not have to vote in every race.



Do not cross out or erase, or your vote may not count. If you make a mistake or a stray mark, you may ask for a new ballot.

Governor / Lt. Governor  
Vote for 1

- Larry Hogan and Boyd K. Rutherford Unopposed

Comptroller  
Vote for 1

- Anjali Reed Phukan Unopposed

Attorney General  
Vote for 1

- Craig Wolf Unopposed

U.S. Senator  
Vote for 1

- Tony Campbell
- Chris Chaffee
- Evan M. Cronhardt
- Nnabu Eze
- John R. Graziani
- Christina J. Grigorian
- Albert Binyahmin Howard
- Bill Krehnbrink
- Gerald I. Smith, Jr.
- Blaine Taylor
- Brian Charles Vaeth

Representative in Congress  
District 1

Vote for 1

- Martin Elborn
- Andy Harris
- Lamont Taylor

State Senator  
District 37

Vote for 1

- Adelaide "Addie" Eckardt Unopposed

House of Delegates  
District 37A

Vote for 1

- Frank E. Cooke Unopposed

County Executive

Vote for 1

- Bob Culver Unopposed

Vote Both Sides





<b>County Council At Large</b> <b>Vote for up to 2</b>
<input type="radio"/> <b>Julie D. Brewington</b> Unopposed
<input type="radio"/> <b>John T. Cannon</b> Unopposed

<b>Sheriff</b> <b>Vote for 1</b>
<input type="radio"/> <b>Mike Lewis</b> Unopposed

<b>County Council District 4</b> <b>Vote for 1</b>
<input type="radio"/> <b>Suzannah Cain</b> Unopposed

<b>Republican Central Committee</b> <b>Vote for up to 9</b>
<input type="radio"/> <b>Wendy Anspacher</b>
<input type="radio"/> <b>Muir Boda</b>
<input type="radio"/> <b>Shawn A. Bradley</b>
<input type="radio"/> <b>Julie D. Brewington</b>
<input type="radio"/> <b>Larry W. Dodd</b>
<input type="radio"/> <b>Joan Frances Gentile</b>
<input type="radio"/> <b>David L. Goslee, Sr.</b>
<input type="radio"/> <b>Jim Jester</b>
<input type="radio"/> <b>Linda Raye Luffman</b>
<input type="radio"/> <b>Mark G. McIver</b>
<input type="radio"/> <b>John Palmer</b>
<input type="radio"/> <b>Nate Sansom</b>
<input type="radio"/> <b>David Louis Snyder</b>

<b>Judge of the Circuit Court Circuit 1</b> <b>Vote for up to 2</b>
<input type="radio"/> <b>Kathleen L. Beckstead</b> Unopposed
<input type="radio"/> <b>Matthew A. Maciarelo</b> Unopposed

<b>State's Attorney</b> <b>Vote for 1</b>
<input type="radio"/> <b>Jamie Dykes</b> Unopposed

<b>Board of Education District 4</b> <b>Vote for 1</b>
<input type="radio"/> <b>Seamus Benn</b>
<input type="radio"/> <b>David Plotts</b>
<input type="radio"/> <b>Ann Brittingham Suthowski</b>

<b>Clerk of the Circuit Court</b> <b>Vote for 1</b>
<input type="radio"/> <b>Shawn A. Bradley</b>
<input type="radio"/> <b>Christopher S. Welch</b>

<b>Judge of the Orphans' Court</b> <b>Vote for up to 3</b>
<input type="radio"/> <b>Grover Green Cantwell, Jr.</b> Unopposed
<b>Nomination Vacant</b>
<b>Nomination Vacant</b>

<b>End of Ballot</b> 
---



Official Ballot  
2018 Gubernatorial Primary Election  
June 26, 2018

BS DEM 1

State of Maryland, Wicomico County  
Democratic Ballot

**Instructions**

**Making Selections**



Fill in the oval to the left of the name of your choice. You must blacken the oval completely, and do not make any marks outside of the oval. You do not have to vote in every race.



Do not cross out or erase, or your vote may not count. If you make a mistake or a stray mark, you may ask for a new ballot.

**Governor / Lt. Governor  
Vote for 1**

**Rushern L. Baker, III  
and  
Elizabeth Embry**

**Ralph Jaffe  
and  
Freda Jaffe**

**Ben Jealous  
and  
Susan Turnbull**

**James Hugh Jones, II  
and  
Charles S. Waters**

**Kevin Kamenetz  
and  
Valerie Ervin**

**Rich Madaleno  
and  
Luwanda Jenkins**

**Alec Ross  
and  
Julie C. Verratti**

**Jim Shea  
and  
Brandon M. Scott**

**Krish O'Mara Vignarajah  
and  
Sharon Y. Blake**

**Comptroller  
Vote for 1**

**Peter Franchot  
Unopposed**

**Attorney General  
Vote for 1**

**Brian E. Frosh  
Unopposed**

**U.S. Senator  
Vote for 1**

**Ben Cardin**

**Erik Jetmir**

**Chelsea Manning**

**Marcia H. Morgan**

**Jerome "Jerry" Segal**

**Richard "Rikki" Vaughn**

**Debbie "Rica" Wilson**

**Lih Young**

**Vote Both Sides**



**Representative in Congress  
District 1**  
Vote for 1

- Michael Brown
- Jesse Colvin
- Allison Galbraith
- Erik Lane
- Michael Pullen
- Steve Worton

**State Senator  
District 37**  
Vote for 1

- Holly Wright  
Unopposed

**House of Delegates  
District 37A**  
Vote for 1

- Charles Cephas, Sr.
- Sheree Sample-Hughes

**County Executive**  
Vote for 1

- John William Hamilton  
Unopposed

**County Council At Large**  
Vote for up to 2

- Jamaad Gould  
Unopposed
- William R. McCain  
Unopposed

**County Council  
District 1**  
Vote for 1

- Marvin Ames
- Ernest Davis
- Eugenie Pinkett Shields

**Judge of the Circuit Court  
Circuit 1**  
Vote for up to 2

- Kathleen L. Beckstead  
Unopposed
- Matthew A. Maciarelo  
Unopposed

**State's Attorney**  
Vote for 1

- W. Seth Mitchell  
Unopposed

**Clerk of the Circuit Court**  
Vote for 1

- James "Bo" McAllister  
Unopposed

**Register of Wills**  
Vote for 1

- Karen A. Lemon  
Unopposed

**Judge of the Orphans' Court**  
Vote for up to 3

- Mark S. Bowen
- Melissa Pollitt Bright
- Dean Jones Evans
- Peter D. "Pete" Evans

**Democratic Central  
Committee Female**  
Vote for up to 4

- Carissa Antonis
- Michele Gregory
- Amanda L. Jackson
- Crystal Jones
- Sarah Meyers

**Democratic Central  
Committee Male**  
Vote for up to 4

- Jake Burdett
- Matthew Davidson
- Mike Folkoff
- Earle Hatton
- Gains Hawkins
- Jared Schablein
- Ivory P. Smith, Sr.
- J. D. Wilkins

**Board of Education  
District 1**  
Vote for 1

- Ruth Angelot
- Michelle Bradley
- Allen C. Brown

**End of Ballot** 

Official Ballot  
2018 Gubernatorial Primary Election  
June 26, 2018

BS DEM 2

State of Maryland, Wicomico County  
Democratic Ballot

**Instructions**

**Making Selections**



Fill in the oval to the left of the name of your choice. You must blacken the oval completely, and do not make any marks outside of the oval. You do not have to vote in every race.



Do not cross out or erase, or your vote may not count. If you make a mistake or a stray mark, you may ask for a new ballot.

**Governor / Lt. Governor  
Vote for 1**

**Rushern L. Baker, III  
and  
Elizabeth Embry**

**Ralph Jaffe  
and  
Freda Jaffe**

**Ben Jealous  
and  
Susan Turnbull**

**James Hugh Jones, II  
and  
Charles S. Waters**

**Kevin Kamenetz  
and  
Valerie Ervin**

**Rich Madaleno  
and  
Luwanda Jenkins**

**Alec Ross  
and  
Julie C. Verratti**

**Jim Shea  
and  
Brandon M. Scott**

**Krish O'Mara Vignarajah  
and  
Sharon Y. Blake**

**Comptroller  
Vote for 1**

**Peter Franchot  
Unopposed**

**Attorney General  
Vote for 1**

**Brian E. Frosh  
Unopposed**

**U.S. Senator  
Vote for 1**

**Ben Cardin**

**Erik Jetmir**

**Chelsea Manning**

**Marcia H. Morgan**

**Jerome "Jerry" Segal**

**Richard "Rikki" Vaughn**

**Debbie "Rica" Wilson**

**Lih Young**

**Vote Both Sides**



<b>Representative in Congress District 1</b> Vote for 1
<input type="radio"/> Michael Brown
<input type="radio"/> Jesse Colvin
<input type="radio"/> Allison Galbraith
<input type="radio"/> Erik Lane
<input type="radio"/> Michael Pullen
<input type="radio"/> Steve Worton

<b>State Senator District 37</b> Vote for 1
<input type="radio"/> Holly Wright Unopposed

<b>House of Delegates District 37A</b> Vote for 1
<input type="radio"/> Charles Cephas, Sr.
<input type="radio"/> Sheree Sample-Hughes

<b>County Executive</b> Vote for 1
<input type="radio"/> John William Hamilton Unopposed

<b>County Council At Large</b> Vote for up to 2
<input type="radio"/> Jamaad Gould Unopposed
<input type="radio"/> William R. McCain Unopposed

<b>County Council District 2</b> Vote for 1
<input type="radio"/> Alexander W. Scott Unopposed

<b>Judge of the Circuit Court Circuit 1</b> Vote for up to 2
<input type="radio"/> Kathleen L. Beckstead Unopposed
<input type="radio"/> Matthew A. Maciarelo Unopposed

<b>State's Attorney</b> Vote for 1
<input type="radio"/> W. Seth Mitchell Unopposed

<b>Clerk of the Circuit Court</b> Vote for 1
<input type="radio"/> James "Bo" McAllister Unopposed

<b>Register of Wills</b> Vote for 1
<input type="radio"/> Karen A. Lemon Unopposed

<b>Judge of the Orphans' Court</b> Vote for up to 3
<input type="radio"/> Mark S. Bowen
<input type="radio"/> Melissa Pollitt Bright
<input type="radio"/> Dean Jones Evans
<input type="radio"/> Peter D. "Pete" Evans

<b>Democratic Central Committee Female</b> Vote for up to 4
<input type="radio"/> Carissa Antonis
<input type="radio"/> Michele Gregory
<input type="radio"/> Amanda L. Jackson
<input type="radio"/> Crystal Jones
<input type="radio"/> Sarah Meyers

<b>Democratic Central Committee Male</b> Vote for up to 4
<input type="radio"/> Jake Burdett
<input type="radio"/> Matthew Davidson
<input type="radio"/> Mike Folkoff
<input type="radio"/> Earle Hatton
<input type="radio"/> Gains Hawkins
<input type="radio"/> Jared Schablein
<input type="radio"/> Ivory P. Smith, Sr.
<input type="radio"/> J. D. Wilkins

**End of Ballot** 

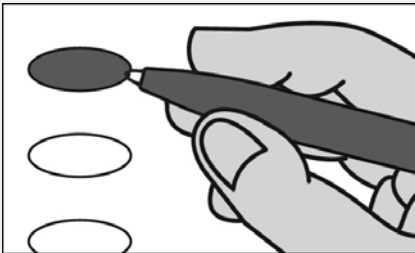
Official Ballot  
2018 Gubernatorial Primary Election  
June 26, 2018

BS DEM 3

State of Maryland, Wicomico County  
Democratic Ballot

**Instructions**

**Making Selections**



Fill in the oval to the left of the name of your choice. You must blacken the oval completely, and do not make any marks outside of the oval. You do not have to vote in every race.



Do not cross out or erase, or your vote may not count. If you make a mistake or a stray mark, you may ask for a new ballot.

**Governor / Lt. Governor  
Vote for 1**

**Rushern L. Baker, III  
and  
Elizabeth Embry**

**Ralph Jaffe  
and  
Freda Jaffe**

**Ben Jealous  
and  
Susan Turnbull**

**James Hugh Jones, II  
and  
Charles S. Waters**

**Kevin Kamenetz  
and  
Valerie Ervin**

**Rich Madaleno  
and  
Luwanda Jenkins**

**Alec Ross  
and  
Julie C. Verratti**

**Jim Shea  
and  
Brandon M. Scott**

**Krish O'Mara Vignarajah  
and  
Sharon Y. Blake**

**Comptroller  
Vote for 1**

**Peter Franchot  
Unopposed**

**Attorney General  
Vote for 1**

**Brian E. Frosh  
Unopposed**

**U.S. Senator  
Vote for 1**

**Ben Cardin**

**Erik Jetmir**

**Chelsea Manning**

**Marcia H. Morgan**

**Jerome "Jerry" Segal**

**Richard "Rikki" Vaughn**

**Debbie "Rica" Wilson**

**Lih Young**

**Vote Both Sides**



<b>Representative in Congress District 1</b> Vote for 1
<input type="radio"/> <b>Michael Brown</b>
<input type="radio"/> <b>Jesse Colvin</b>
<input type="radio"/> <b>Allison Galbraith</b>
<input type="radio"/> <b>Erik Lane</b>
<input type="radio"/> <b>Michael Pullen</b>
<input type="radio"/> <b>Steve Worton</b>

<b>State Senator District 37</b> Vote for 1
<input type="radio"/> <b>Holly Wright</b> Unopposed

<b>House of Delegates District 37B</b> Vote for up to 2
<input type="radio"/> <b>Dan O'Hare</b> Unopposed
<b>Nomination Vacant</b>

<b>County Executive</b> Vote for 1
<input type="radio"/> <b>John William Hamilton</b> Unopposed

<b>County Council At Large</b> Vote for up to 2
<input type="radio"/> <b>Jamaad Gould</b> Unopposed
<input type="radio"/> <b>William R. McCain</b> Unopposed

<b>County Council District 2</b> Vote for 1
<input type="radio"/> <b>Alexander W. Scott</b> Unopposed

<b>Judge of the Circuit Court Circuit 1</b> Vote for up to 2
<input type="radio"/> <b>Kathleen L. Beckstead</b> Unopposed
<input type="radio"/> <b>Matthew A. Maciarelo</b> Unopposed

<b>State's Attorney</b> Vote for 1
<input type="radio"/> <b>W. Seth Mitchell</b> Unopposed

<b>Clerk of the Circuit Court</b> Vote for 1
<input type="radio"/> <b>James "Bo" McAllister</b> Unopposed

<b>Register of Wills</b> Vote for 1
<input type="radio"/> <b>Karen A. Lemon</b> Unopposed

<b>Judge of the Orphans' Court</b> Vote for up to 3
<input type="radio"/> <b>Mark S. Bowen</b>
<input type="radio"/> <b>Melissa Pollitt Bright</b>
<input type="radio"/> <b>Dean Jones Evans</b>
<input type="radio"/> <b>Peter D. "Pete" Evans</b>

<b>Democratic Central Committee Female</b> Vote for up to 4
<input type="radio"/> <b>Carissa Antonis</b>
<input type="radio"/> <b>Michele Gregory</b>
<input type="radio"/> <b>Amanda L. Jackson</b>
<input type="radio"/> <b>Crystal Jones</b>
<input type="radio"/> <b>Sarah Meyers</b>

<b>Democratic Central Committee Male</b> Vote for up to 4
<input type="radio"/> <b>Jake Burdett</b>
<input type="radio"/> <b>Matthew Davidson</b>
<input type="radio"/> <b>Mike Folkoff</b>
<input type="radio"/> <b>Earle Hatton</b>
<input type="radio"/> <b>Gains Hawkins</b>
<input type="radio"/> <b>Jared Schablein</b>
<input type="radio"/> <b>Ivory P. Smith, Sr.</b>
<input type="radio"/> <b>J. D. Wilkins</b>

**End of Ballot** 



Official Ballot  
2018 Gubernatorial Primary Election  
June 26, 2018

BS DEM 4

State of Maryland, Wicomico County  
Democratic Ballot

Instructions

Making Selections



Fill in the oval to the left of the name of your choice. You must blacken the oval completely, and do not make any marks outside of the oval. You do not have to vote in every race.



Do not cross out or erase, or your vote may not count. If you make a mistake or a stray mark, you may ask for a new ballot.

Governor / Lt. Governor  
Vote for 1

- Rushern L. Baker, III  
and  
Elizabeth Embry
- Ralph Jaffe  
and  
Freda Jaffe
- Ben Jealous  
and  
Susan Turnbull
- James Hugh Jones, II  
and  
Charles S. Waters
- Kevin Kamenetz  
and  
Valerie Ervin
- Rich Madaleno  
and  
Luwanda Jenkins
- Alec Ross  
and  
Julie C. Verratti
- Jim Shea  
and  
Brandon M. Scott
- Krish O'Mara Vignarajah  
and  
Sharon Y. Blake

Comptroller  
Vote for 1

- Peter Franchot  
Unopposed

Attorney General  
Vote for 1

- Brian E. Frosh  
Unopposed

U.S. Senator  
Vote for 1

- Ben Cardin
- Erik Jetmir
- Chelsea Manning
- Marcia H. Morgan
- Jerome "Jerry" Segal
- Richard "Rikki" Vaughn
- Debbie "Rica" Wilson
- Lih Young

Vote Both Sides



**Representative in Congress  
District 1**  
Vote for 1

- Michael Brown
- Jesse Colvin
- Allison Galbraith
- Erik Lane
- Michael Pullen
- Steve Worton

**State Senator  
District 38**  
Vote for 1

- Jim Mathias  
Unopposed

**County Executive**  
Vote for 1

- John William Hamilton  
Unopposed

**County Council At Large**  
Vote for up to 2

- Jamaad Gould  
Unopposed
- William R. McCain  
Unopposed

**County Council  
District 3**  
Vote for 1

- Michele Gregory  
Unopposed

**Judge of the Circuit Court  
Circuit 1**  
Vote for up to 2

- Kathleen L. Beckstead  
Unopposed
- Matthew A. Maciarelo  
Unopposed

**State's Attorney**  
Vote for 1

- W. Seth Mitchell  
Unopposed

**Clerk of the Circuit Court**  
Vote for 1

- James "Bo" McAllister  
Unopposed

**Register of Wills**  
Vote for 1

- Karen A. Lemon  
Unopposed

**Judge of the Orphans' Court**  
Vote for up to 3

- Mark S. Bowen
- Melissa Pollitt Bright
- Dean Jones Evans
- Peter D. "Pete" Evans

**Democratic Central  
Committee Female**  
Vote for up to 4

- Carissa Antonis
- Michele Gregory
- Amanda L. Jackson
- Crystal Jones
- Sarah Meyers

**Democratic Central  
Committee Male**  
Vote for up to 4

- Jake Burdett
- Matthew Davidson
- Mike Folkoff
- Earle Hatton
- Gains Hawkins
- Jared Schablein
- Ivory P. Smith, Sr.
- J. D. Wilkins

**End of Ballot** 

Official Ballot  
2018 Gubernatorial Primary Election  
June 26, 2018

BS DEM 5

State of Maryland, Wicomico County  
Democratic Ballot

Instructions

Making Selections



Fill in the oval to the left of the name of your choice. You must blacken the oval completely, and do not make any marks outside of the oval. You do not have to vote in every race.



Do not cross out or erase, or your vote may not count. If you make a mistake or a stray mark, you may ask for a new ballot.

Governor / Lt. Governor  
Vote for 1

- Rushern L. Baker, III  
and  
Elizabeth Embry
- Ralph Jaffe  
and  
Freda Jaffe
- Ben Jealous  
and  
Susan Turnbull
- James Hugh Jones, II  
and  
Charles S. Waters
- Kevin Kamenetz  
and  
Valerie Ervin
- Rich Madaleno  
and  
Luwanda Jenkins
- Alec Ross  
and  
Julie C. Verratti
- Jim Shea  
and  
Brandon M. Scott
- Krish O'Mara Vignarajah  
and  
Sharon Y. Blake

Comptroller  
Vote for 1

- Peter Franchot  
Unopposed

Attorney General  
Vote for 1

- Brian E. Frosh  
Unopposed

U.S. Senator  
Vote for 1

- Ben Cardin
- Erik Jetmir
- Chelsea Manning
- Marcia H. Morgan
- Jerome "Jerry" Segal
- Richard "Rikki" Vaughn
- Debbie "Rica" Wilson
- Lih Young

Vote Both Sides



<b>Representative in Congress District 1</b> Vote for 1
<input type="radio"/> Michael Brown
<input type="radio"/> Jesse Colvin
<input type="radio"/> Allison Galbraith
<input type="radio"/> Erik Lane
<input type="radio"/> Michael Pullen
<input type="radio"/> Steve Worton

<b>State's Attorney</b> Vote for 1
<input type="radio"/> W. Seth Mitchell Unopposed

<b>Democratic Central Committee Male</b> Vote for up to 4
<input type="radio"/> Jake Burdett
<input type="radio"/> Matthew Davidson
<input type="radio"/> Mike Folkoff
<input type="radio"/> Earle Hatton
<input type="radio"/> Gains Hawkins
<input type="radio"/> Jared Schablein
<input type="radio"/> Ivory P. Smith, Sr.
<input type="radio"/> J. D. Wilkins

<b>State Senator District 38</b> Vote for 1
<input type="radio"/> Jim Mathias Unopposed

<b>Register of Wills</b> Vote for 1
<input type="radio"/> Karen A. Lemon Unopposed

<b>County Executive</b> Vote for 1
<input type="radio"/> John William Hamilton Unopposed

<b>Judge of the Orphans' Court</b> Vote for up to 3
<input type="radio"/> Mark S. Bowen
<input type="radio"/> Melissa Pollitt Bright
<input type="radio"/> Dean Jones Evans
<input type="radio"/> Peter D. "Pete" Evans

<b>County Council At Large</b> Vote for up to 2
<input type="radio"/> Jamaad Gould Unopposed
<input type="radio"/> William R. McCain Unopposed

<b>Democratic Central Committee Female</b> Vote for up to 4
<input type="radio"/> Carissa Antonis
<input type="radio"/> Michele Gregory
<input type="radio"/> Amanda L. Jackson
<input type="radio"/> Crystal Jones
<input type="radio"/> Sarah Meyers

<b>Judge of the Circuit Court Circuit 1</b> Vote for up to 2
<input type="radio"/> Kathleen L. Beckstead Unopposed
<input type="radio"/> Matthew A. Maciarelo Unopposed

**End of Ballot** 

Official Ballot  
2018 Gubernatorial Primary Election  
June 26, 2018

BS DEM 6

State of Maryland, Wicomico County  
Democratic Ballot

Instructions

Making Selections



Fill in the oval to the left of the name of your choice. You must blacken the oval completely, and do not make any marks outside of the oval. You do not have to vote in every race.



Do not cross out or erase, or your vote may not count. If you make a mistake or a stray mark, you may ask for a new ballot.

Governor / Lt. Governor  
Vote for 1

- Rushern L. Baker, III  
and  
Elizabeth Embry
- Ralph Jaffe  
and  
Freda Jaffe
- Ben Jealous  
and  
Susan Turnbull
- James Hugh Jones, II  
and  
Charles S. Waters
- Kevin Kamenetz  
and  
Valerie Ervin
- Rich Madaleno  
and  
Luwanda Jenkins
- Alec Ross  
and  
Julie C. Verratti
- Jim Shea  
and  
Brandon M. Scott
- Krish O'Mara Vignarajah  
and  
Sharon Y. Blake

Comptroller  
Vote for 1

- Peter Franchot  
Unopposed

Attorney General  
Vote for 1

- Brian E. Frosh  
Unopposed

U.S. Senator  
Vote for 1

- Ben Cardin
- Erik Jetmir
- Chelsea Manning
- Marcia H. Morgan
- Jerome "Jerry" Segal
- Richard "Rikki" Vaughn
- Debbie "Rica" Wilson
- Lih Young

Vote Both Sides



<b>Representative in Congress District 1</b> Vote for 1
<input type="radio"/> Michael Brown
<input type="radio"/> Jesse Colvin
<input type="radio"/> Allison Galbraith
<input type="radio"/> Erik Lane
<input type="radio"/> Michael Pullen
<input type="radio"/> Steve Worton

<b>State Senator District 37</b> Vote for 1
<input type="radio"/> Holly Wright Unopposed

<b>House of Delegates District 37A</b> Vote for 1
<input type="radio"/> Charles Cephas, Sr.
<input type="radio"/> Sheree Sample-Hughes

<b>County Executive</b> Vote for 1
<input type="radio"/> John William Hamilton Unopposed

<b>County Council At Large</b> Vote for up to 2
<input type="radio"/> Jamaad Gould Unopposed
<input type="radio"/> William R. McCain Unopposed

<b>County Council District 3</b> Vote for 1
<input type="radio"/> Michele Gregory Unopposed

<b>Judge of the Circuit Court Circuit 1</b> Vote for up to 2
<input type="radio"/> Kathleen L. Beckstead Unopposed
<input type="radio"/> Matthew A. Maciarelo Unopposed

<b>State's Attorney</b> Vote for 1
<input type="radio"/> W. Seth Mitchell Unopposed

<b>Clerk of the Circuit Court</b> Vote for 1
<input type="radio"/> James "Bo" McAllister Unopposed

<b>Register of Wills</b> Vote for 1
<input type="radio"/> Karen A. Lemon Unopposed

<b>Judge of the Orphans' Court</b> Vote for up to 3
<input type="radio"/> Mark S. Bowen
<input type="radio"/> Melissa Pollitt Bright
<input type="radio"/> Dean Jones Evans
<input type="radio"/> Peter D. "Pete" Evans

<b>Democratic Central Committee Female</b> Vote for up to 4
<input type="radio"/> Carissa Antonis
<input type="radio"/> Michele Gregory
<input type="radio"/> Amanda L. Jackson
<input type="radio"/> Crystal Jones
<input type="radio"/> Sarah Meyers

<b>Democratic Central Committee Male</b> Vote for up to 4
<input type="radio"/> Jake Burdett
<input type="radio"/> Matthew Davidson
<input type="radio"/> Mike Folkoff
<input type="radio"/> Earle Hatton
<input type="radio"/> Gains Hawkins
<input type="radio"/> Jared Schablein
<input type="radio"/> Ivory P. Smith, Sr.
<input type="radio"/> J. D. Wilkins

**End of Ballot** 

Official Ballot  
2018 Gubernatorial Primary Election  
June 26, 2018

BS DEM 7

State of Maryland, Wicomico County  
Democratic Ballot

**Instructions**

**Making Selections**



Fill in the oval to the left of the name of your choice. You must blacken the oval completely, and do not make any marks outside of the oval. You do not have to vote in every race.



Do not cross out or erase, or your vote may not count. If you make a mistake or a stray mark, you may ask for a new ballot.

**Governor / Lt. Governor  
Vote for 1**

**Rushern L. Baker, III  
and  
Elizabeth Embry**

**Ralph Jaffe  
and  
Freda Jaffe**

**Ben Jealous  
and  
Susan Turnbull**

**James Hugh Jones, II  
and  
Charles S. Waters**

**Kevin Kamenetz  
and  
Valerie Ervin**

**Rich Madaleno  
and  
Luwanda Jenkins**

**Alec Ross  
and  
Julie C. Verratti**

**Jim Shea  
and  
Brandon M. Scott**

**Krish O'Mara Vignarajah  
and  
Sharon Y. Blake**

**Comptroller  
Vote for 1**

**Peter Franchot  
Unopposed**

**Attorney General  
Vote for 1**

**Brian E. Frosh  
Unopposed**

**U.S. Senator  
Vote for 1**

**Ben Cardin**

**Erik Jetmir**

**Chelsea Manning**

**Marcia H. Morgan**

**Jerome "Jerry" Segal**

**Richard "Rikki" Vaughn**

**Debbie "Rica" Wilson**

**Lih Young**

**Vote Both Sides**



<b>Representative in Congress District 1</b> Vote for 1
<input type="radio"/> Michael Brown
<input type="radio"/> Jesse Colvin
<input type="radio"/> Allison Galbraith
<input type="radio"/> Erik Lane
<input type="radio"/> Michael Pullen
<input type="radio"/> Steve Worton

<b>State's Attorney</b> Vote for 1
<input type="radio"/> W. Seth Mitchell Unopposed

<b>Democratic Central Committee Male</b> Vote for up to 4
<input type="radio"/> Jake Burdett
<input type="radio"/> Matthew Davidson
<input type="radio"/> Mike Folkoff
<input type="radio"/> Earle Hatton
<input type="radio"/> Gains Hawkins
<input type="radio"/> Jared Schablein
<input type="radio"/> Ivory P. Smith, Sr.
<input type="radio"/> J. D. Wilkins

<b>State Senator District 38</b> Vote for 1
<input type="radio"/> Jim Mathias Unopposed

<b>Register of Wills</b> Vote for 1
<input type="radio"/> Karen A. Lemon Unopposed

<b>County Executive</b> Vote for 1
<input type="radio"/> John William Hamilton Unopposed

<b>Judge of the Orphans' Court</b> Vote for up to 3
<input type="radio"/> Mark S. Bowen
<input type="radio"/> Melissa Pollitt Bright
<input type="radio"/> Dean Jones Evans
<input type="radio"/> Peter D. "Pete" Evans

<b>County Council At Large</b> Vote for up to 2
<input type="radio"/> Jamaad Gould Unopposed
<input type="radio"/> William R. McCain Unopposed

<b>Democratic Central Committee Female</b> Vote for up to 4
<input type="radio"/> Carissa Antonis
<input type="radio"/> Michele Gregory
<input type="radio"/> Amanda L. Jackson
<input type="radio"/> Crystal Jones
<input type="radio"/> Sarah Meyers

<b>Judge of the Circuit Court Circuit 1</b> Vote for up to 2
<input type="radio"/> Kathleen L. Beckstead Unopposed
<input type="radio"/> Matthew A. Maciarelo Unopposed

**End of Ballot** 



Official Ballot  
2018 Gubernatorial Primary Election  
June 26, 2018

BS DEM 8

State of Maryland, Wicomico County  
Democratic Ballot

**Instructions**

**Making Selections**



Fill in the oval to the left of the name of your choice. You must blacken the oval completely, and do not make any marks outside of the oval. You do not have to vote in every race.



Do not cross out or erase, or your vote may not count. If you make a mistake or a stray mark, you may ask for a new ballot.

**Governor / Lt. Governor  
Vote for 1**

- Rushern L. Baker, III  
and  
Elizabeth Embry**
- Ralph Jaffe  
and  
Freda Jaffe**
- Ben Jealous  
and  
Susan Turnbull**
- James Hugh Jones, II  
and  
Charles S. Waters**
- Kevin Kamenetz  
and  
Valerie Ervin**
- Rich Madaleno  
and  
Luwanda Jenkins**
- Alec Ross  
and  
Julie C. Verratti**
- Jim Shea  
and  
Brandon M. Scott**
- Krish O'Mara Vignarajah  
and  
Sharon Y. Blake**

**Comptroller  
Vote for 1**

- Peter Franchot  
Unopposed**

**Attorney General  
Vote for 1**

- Brian E. Frosh  
Unopposed**

**U.S. Senator  
Vote for 1**

- Ben Cardin**
- Erik Jetmir**
- Chelsea Manning**
- Marcia H. Morgan**
- Jerome "Jerry" Segal**
- Richard "Rikki" Vaughn**
- Debbie "Rica" Wilson**
- Lih Young**

**Vote Both Sides**



<b>Representative in Congress District 1</b> Vote for 1
<input type="radio"/> Michael Brown
<input type="radio"/> Jesse Colvin
<input type="radio"/> Allison Galbraith
<input type="radio"/> Erik Lane
<input type="radio"/> Michael Pullen
<input type="radio"/> Steve Worton

<b>State Senator District 37</b> Vote for 1
<input type="radio"/> Holly Wright Unopposed

<b>House of Delegates District 37B</b> Vote for up to 2
<input type="radio"/> Dan O'Hare Unopposed
<b>Nomination Vacant</b>

<b>County Executive</b> Vote for 1
<input type="radio"/> John William Hamilton Unopposed

<b>County Council At Large</b> Vote for up to 2
<input type="radio"/> Jamaad Gould Unopposed
<input type="radio"/> William R. McCain Unopposed

<b>County Council District 3</b> Vote for 1
<input type="radio"/> Michele Gregory Unopposed

<b>Judge of the Circuit Court Circuit 1</b> Vote for up to 2
<input type="radio"/> Kathleen L. Beckstead Unopposed
<input type="radio"/> Matthew A. Maciarelo Unopposed

<b>State's Attorney</b> Vote for 1
<input type="radio"/> W. Seth Mitchell Unopposed


<b>Clerk of the Circuit Court</b> Vote for 1
<input type="radio"/> James "Bo" McAllister Unopposed

<b>Register of Wills</b> Vote for 1
<input type="radio"/> Karen A. Lemon Unopposed

<b>Judge of the Orphans' Court</b> Vote for up to 3
<input type="radio"/> Mark S. Bowen
<input type="radio"/> Melissa Pollitt Bright
<input type="radio"/> Dean Jones Evans
<input type="radio"/> Peter D. "Pete" Evans

<b>Democratic Central Committee Female</b> Vote for up to 4
<input type="radio"/> Carissa Antonis
<input type="radio"/> Michele Gregory
<input type="radio"/> Amanda L. Jackson
<input type="radio"/> Crystal Jones
<input type="radio"/> Sarah Meyers

<b>Democratic Central Committee Male</b> Vote for up to 4
<input type="radio"/> Jake Burdett
<input type="radio"/> Matthew Davidson
<input type="radio"/> Mike Folkoff
<input type="radio"/> Earle Hatton
<input type="radio"/> Gains Hawkins
<input type="radio"/> Jared Schablein
<input type="radio"/> Ivory P. Smith, Sr.
<input type="radio"/> J. D. Wilkins

**End of Ballot** 

Official Ballot  
2018 Gubernatorial Primary Election  
June 26, 2018

BS DEM 9

State of Maryland, Wicomico County  
Democratic Ballot

Instructions

Making Selections



Fill in the oval to the left of the name of your choice. You must blacken the oval completely, and do not make any marks outside of the oval. You do not have to vote in every race.



Do not cross out or erase, or your vote may not count. If you make a mistake or a stray mark, you may ask for a new ballot.

Governor / Lt. Governor  
Vote for 1

Rushern L. Baker, III  
and  
Elizabeth Embry

Ralph Jaffe  
and  
Freda Jaffe

Ben Jealous  
and  
Susan Turnbull

James Hugh Jones, II  
and  
Charles S. Waters

Kevin Kamenetz  
and  
Valerie Ervin

Rich Madaleno  
and  
Luwanda Jenkins

Alec Ross  
and  
Julie C. Verratti

Jim Shea  
and  
Brandon M. Scott

Krish O'Mara Vignarajah  
and  
Sharon Y. Blake

Comptroller  
Vote for 1

Peter Franchot  
Unopposed

Attorney General  
Vote for 1

Brian E. Frosh  
Unopposed

U.S. Senator  
Vote for 1

Ben Cardin

Erik Jetmir

Chelsea Manning

Marcia H. Morgan

Jerome "Jerry" Segal

Richard "Rikki" Vaughn

Debbie "Rica" Wilson

Lih Young

Vote Both Sides



<b>Representative in Congress District 1</b> Vote for 1
<input type="radio"/> Michael Brown
<input type="radio"/> Jesse Colvin
<input type="radio"/> Allison Galbraith
<input type="radio"/> Erik Lane
<input type="radio"/> Michael Pullen
<input type="radio"/> Steve Worton

<b>State Senator District 37</b> Vote for 1
<input type="radio"/> Holly Wright Unopposed

<b>House of Delegates District 37B</b> Vote for up to 2
<input type="radio"/> Dan O'Hare Unopposed
<b>Nomination Vacant</b>

<b>County Executive</b> Vote for 1
<input type="radio"/> John William Hamilton Unopposed

<b>County Council At Large</b> Vote for up to 2
<input type="radio"/> Jamaad Gould Unopposed
<input type="radio"/> William R. McCain Unopposed

<b>County Council District 4</b> Vote for 1
<input type="radio"/> Josh Hastings Unopposed

<b>Judge of the Circuit Court Circuit 1</b> Vote for up to 2
<input type="radio"/> Kathleen L. Beckstead Unopposed
<input type="radio"/> Matthew A. Maciarelo Unopposed

<b>State's Attorney</b> Vote for 1
<input type="radio"/> W. Seth Mitchell Unopposed

<b>Clerk of the Circuit Court</b> Vote for 1
<input type="radio"/> James "Bo" McAllister Unopposed


<b>Register of Wills</b> Vote for 1
<input type="radio"/> Karen A. Lemon Unopposed

<b>Judge of the Orphans' Court</b> Vote for up to 3
<input type="radio"/> Mark S. Bowen
<input type="radio"/> Melissa Pollitt Bright
<input type="radio"/> Dean Jones Evans
<input type="radio"/> Peter D. "Pete" Evans

<b>Democratic Central Committee Female</b> Vote for up to 4
<input type="radio"/> Carissa Antonis
<input type="radio"/> Michele Gregory
<input type="radio"/> Amanda L. Jackson
<input type="radio"/> Crystal Jones
<input type="radio"/> Sarah Meyers

<b>Democratic Central Committee Male</b> Vote for up to 4
<input type="radio"/> Jake Burdett
<input type="radio"/> Matthew Davidson
<input type="radio"/> Mike Folkoff
<input type="radio"/> Earle Hatton
<input type="radio"/> Gains Hawkins
<input type="radio"/> Jared Schablein
<input type="radio"/> Ivory P. Smith, Sr.
<input type="radio"/> J. D. Wilkins

<b>Board of Education District 4</b> Vote for 1
<input type="radio"/> Seamus Benn
<input type="radio"/> David Plotts
<input type="radio"/> Ann Brittingham Suthowski

<b>End of Ballot</b> 
--

Official Ballot  
2018 Gubernatorial Primary Election  
June 26, 2018

BS DEM 10

State of Maryland, Wicomico County  
Democratic Ballot

Instructions

Making Selections



Fill in the oval to the left of the name of your choice. You must blacken the oval completely, and do not make any marks outside of the oval. You do not have to vote in every race.



Do not cross out or erase, or your vote may not count. If you make a mistake or a stray mark, you may ask for a new ballot.

Governor / Lt. Governor  
Vote for 1

- Rushern L. Baker, III  
and  
Elizabeth Embry
- Ralph Jaffe  
and  
Freda Jaffe
- Ben Jealous  
and  
Susan Turnbull
- James Hugh Jones, II  
and  
Charles S. Waters
- Kevin Kamenetz  
and  
Valerie Ervin
- Rich Madaleno  
and  
Luwanda Jenkins
- Alec Ross  
and  
Julie C. Verratti
- Jim Shea  
and  
Brandon M. Scott
- Krish O'Mara Vignarajah  
and  
Sharon Y. Blake

Comptroller  
Vote for 1

- Peter Franchot  
Unopposed

Attorney General  
Vote for 1

- Brian E. Frosh  
Unopposed

U.S. Senator  
Vote for 1

- Ben Cardin
- Erik Jetmir
- Chelsea Manning
- Marcia H. Morgan
- Jerome "Jerry" Segal
- Richard "Rikki" Vaughn
- Debbie "Rica" Wilson
- Lih Young

Vote Both Sides



**Representative in Congress  
District 1**  
Vote for 1

- Michael Brown
- Jesse Colvin
- Allison Galbraith
- Erik Lane
- Michael Pullen
- Steve Worton

**State Senator  
District 38**  
Vote for 1

- Jim Mathias  
Unopposed

**County Executive**  
Vote for 1

- John William Hamilton  
Unopposed

**County Council At Large**  
Vote for up to 2

- Jamaad Gould  
Unopposed
- William R. McCain  
Unopposed

**County Council  
District 4**  
Vote for 1

- Josh Hastings  
Unopposed

**Judge of the Circuit Court  
Circuit 1**  
Vote for up to 2

- Kathleen L. Beckstead  
Unopposed
- Matthew A. Maciarelo  
Unopposed

**State's Attorney**  
Vote for 1

- W. Seth Mitchell  
Unopposed

**Clerk of the Circuit Court**  
Vote for 1

- James "Bo" McAllister  
Unopposed

**Register of Wills**  
Vote for 1

- Karen A. Lemon  
Unopposed

**Judge of the Orphans' Court**  
Vote for up to 3

- Mark S. Bowen
- Melissa Pollitt Bright
- Dean Jones Evans
- Peter D. "Pete" Evans

**Democratic Central  
Committee Female**  
Vote for up to 4

- Carissa Antonis
- Michele Gregory
- Amanda L. Jackson
- Crystal Jones
- Sarah Meyers

**Democratic Central  
Committee Male**  
Vote for up to 4

- Jake Burdett
- Matthew Davidson
- Mike Folkoff
- Earle Hatton
- Gains Hawkins
- Jared Schablein
- Ivory P. Smith, Sr.
- J. D. Wilkins

**Board of Education  
District 4**  
Vote for 1

- Seamus Benn
- David Plotts
- Ann Brittingham  
Suthowski

**End of Ballot** 

Official Ballot  
2018 Gubernatorial Primary Election  
June 26, 2018

BS DEM 11

State of Maryland, Wicomico County  
Democratic Ballot

**Instructions**

**Making Selections**



Fill in the oval to the left of the name of your choice. You must blacken the oval completely, and do not make any marks outside of the oval. You do not have to vote in every race.



Do not cross out or erase, or your vote may not count. If you make a mistake or a stray mark, you may ask for a new ballot.

**Governor / Lt. Governor  
Vote for 1**

**Rushern L. Baker, III  
and  
Elizabeth Embry**

**Ralph Jaffe  
and  
Freda Jaffe**

**Ben Jealous  
and  
Susan Turnbull**

**James Hugh Jones, II  
and  
Charles S. Waters**

**Kevin Kamenetz  
and  
Valerie Ervin**

**Rich Madaleno  
and  
Luwanda Jenkins**

**Alec Ross  
and  
Julie C. Verratti**

**Jim Shea  
and  
Brandon M. Scott**

**Krish O'Mara Vignarajah  
and  
Sharon Y. Blake**

**Comptroller  
Vote for 1**

**Peter Franchot  
Unopposed**

**Attorney General  
Vote for 1**

**Brian E. Frosh  
Unopposed**

**U.S. Senator  
Vote for 1**

**Ben Cardin**

**Erik Jetmir**

**Chelsea Manning**

**Marcia H. Morgan**

**Jerome "Jerry" Segal**

**Richard "Rikki" Vaughn**

**Debbie "Rica" Wilson**

**Lih Young**

**Vote Both Sides**



<b>Representative in Congress District 1</b> Vote for 1
<input type="radio"/> Michael Brown
<input type="radio"/> Jesse Colvin
<input type="radio"/> Allison Galbraith
<input type="radio"/> Erik Lane
<input type="radio"/> Michael Pullen
<input type="radio"/> Steve Worton

<b>State Senator District 38</b> Vote for 1
<input type="radio"/> Jim Mathias Unopposed

<b>County Executive</b> Vote for 1
<input type="radio"/> John William Hamilton Unopposed

<b>County Council At Large</b> Vote for up to 2
<input type="radio"/> Jamaad Gould Unopposed
<input type="radio"/> William R. McCain Unopposed

<b>County Council District 1</b> Vote for 1
<input type="radio"/> Marvin Ames
<input type="radio"/> Ernest Davis
<input type="radio"/> Eugenie Pinkett Shields

<b>Judge of the Circuit Court Circuit 1</b> Vote for up to 2
<input type="radio"/> Kathleen L. Beckstead Unopposed
<input type="radio"/> Matthew A. Maciarelo Unopposed

<b>State's Attorney</b> Vote for 1
<input type="radio"/> W. Seth Mitchell Unopposed

<b>Clerk of the Circuit Court</b> Vote for 1
<input type="radio"/> James "Bo" McAllister Unopposed

<b>Register of Wills</b> Vote for 1
<input type="radio"/> Karen A. Lemon Unopposed

<b>Judge of the Orphans' Court</b> Vote for up to 3
<input type="radio"/> Mark S. Bowen
<input type="radio"/> Melissa Pollitt Bright
<input type="radio"/> Dean Jones Evans
<input type="radio"/> Peter D. "Pete" Evans

<b>Democratic Central Committee Female</b> Vote for up to 4
<input type="radio"/> Carissa Antonis
<input type="radio"/> Michele Gregory
<input type="radio"/> Amanda L. Jackson
<input type="radio"/> Crystal Jones
<input type="radio"/> Sarah Meyers

<b>Democratic Central Committee Male</b> Vote for up to 4
<input type="radio"/> Jake Burdett
<input type="radio"/> Matthew Davidson
<input type="radio"/> Mike Folkoff
<input type="radio"/> Earle Hatton
<input type="radio"/> Gains Hawkins
<input type="radio"/> Jared Schablein
<input type="radio"/> Ivory P. Smith, Sr.
<input type="radio"/> J. D. Wilkins

<b>Board of Education District 1</b> Vote for 1
<input type="radio"/> Ruth Angelot
<input type="radio"/> Michelle Bradley
<input type="radio"/> Allen C. Brown

**End of Ballot** 



Official Ballot  
2018 Gubernatorial Primary Election  
June 26, 2018

BS DEM 12

State of Maryland, Wicomico County  
Democratic Ballot

Instructions

Making Selections



Fill in the oval to the left of the name of your choice. You must blacken the oval completely, and do not make any marks outside of the oval. You do not have to vote in every race.



Do not cross out or erase, or your vote may not count. If you make a mistake or a stray mark, you may ask for a new ballot.

Governor / Lt. Governor  
Vote for 1

Rushern L. Baker, III  
and  
Elizabeth Embry

Ralph Jaffe  
and  
Freda Jaffe

Ben Jealous  
and  
Susan Turnbull

James Hugh Jones, II  
and  
Charles S. Waters

Kevin Kamenetz  
and  
Valerie Ervin

Rich Madaleno  
and  
Luwanda Jenkins

Alec Ross  
and  
Julie C. Verratti

Jim Shea  
and  
Brandon M. Scott

Krish O'Mara Vignarajah  
and  
Sharon Y. Blake

Comptroller  
Vote for 1

Peter Franchot  
Unopposed

Attorney General  
Vote for 1

Brian E. Frosh  
Unopposed

U.S. Senator  
Vote for 1

Ben Cardin

Erik Jetmir

Chelsea Manning

Marcia H. Morgan

Jerome "Jerry" Segal

Richard "Rikki" Vaughn

Debbie "Rica" Wilson

Lih Young

Vote Both Sides



**Representative in Congress  
District 1**  
Vote for 1

- Michael Brown
- Jesse Colvin
- Allison Galbraith
- Erik Lane
- Michael Pullen
- Steve Worton

**State Senator  
District 38**  
Vote for 1

- Jim Mathias  
Unopposed

**County Executive**  
Vote for 1

- John William Hamilton  
Unopposed

**County Council At Large**  
Vote for up to 2

- Jamaad Gould  
Unopposed
- William R. McCain  
Unopposed

**County Council  
District 2**  
Vote for 1

- Alexander W. Scott  
Unopposed

**Judge of the Circuit Court  
Circuit 1**  
Vote for up to 2

- Kathleen L. Beckstead  
Unopposed
- Matthew A. Maciarelo  
Unopposed

**State's Attorney**  
Vote for 1

- W. Seth Mitchell  
Unopposed

**Clerk of the Circuit Court**  
Vote for 1

- James "Bo" McAllister  
Unopposed

**Register of Wills**  
Vote for 1

- Karen A. Lemon  
Unopposed

**Judge of the Orphans' Court**  
Vote for up to 3

- Mark S. Bowen
- Melissa Pollitt Bright
- Dean Jones Evans
- Peter D. "Pete" Evans

**Democratic Central  
Committee Female**  
Vote for up to 4

- Carissa Antonis
- Michele Gregory
- Amanda L. Jackson
- Crystal Jones
- Sarah Meyers

**Democratic Central  
Committee Male**  
Vote for up to 4

- Jake Burdett
- Matthew Davidson
- Mike Folkoff
- Earle Hatton
- Gains Hawkins
- Jared Schablein
- Ivory P. Smith, Sr.
- J. D. Wilkins

**End of Ballot** 

Official Ballot  
2018 Gubernatorial Primary Election  
June 26, 2018

BS DEM 13

State of Maryland, Wicomico County  
Democratic Ballot

**Instructions**

**Making Selections**



Fill in the oval to the left of the name of your choice. You must blacken the oval completely, and do not make any marks outside of the oval. You do not have to vote in every race.



Do not cross out or erase, or your vote may not count. If you make a mistake or a stray mark, you may ask for a new ballot.

**Governor / Lt. Governor  
Vote for 1**

**Rushern L. Baker, III  
and  
Elizabeth Embry**

**Ralph Jaffe  
and  
Freda Jaffe**

**Ben Jealous  
and  
Susan Turnbull**

**James Hugh Jones, II  
and  
Charles S. Waters**

**Kevin Kamenetz  
and  
Valerie Ervin**

**Rich Madaleno  
and  
Luwanda Jenkins**

**Alec Ross  
and  
Julie C. Verratti**

**Jim Shea  
and  
Brandon M. Scott**

**Krish O'Mara Vignarajah  
and  
Sharon Y. Blake**

**Comptroller  
Vote for 1**

**Peter Franchot  
Unopposed**

**Attorney General  
Vote for 1**

**Brian E. Frosh  
Unopposed**

**U.S. Senator  
Vote for 1**

**Ben Cardin**

**Erik Jetmir**

**Chelsea Manning**

**Marcia H. Morgan**

**Jerome "Jerry" Segal**

**Richard "Rikki" Vaughn**

**Debbie "Rica" Wilson**

**Lih Young**

**Vote Both Sides**



**Representative in Congress  
District 1**  
Vote for 1

- Michael Brown
- Jesse Colvin
- Allison Galbraith
- Erik Lane
- Michael Pullen
- Steve Worton

**State Senator  
District 37**  
Vote for 1

- Holly Wright  
Unopposed

**House of Delegates  
District 37A**  
Vote for 1

- Charles Cephas, Sr.
- Sheree Sample-Hughes

**County Executive**  
Vote for 1

- John William Hamilton  
Unopposed

**County Council At Large**  
Vote for up to 2

- Jamaad Gould  
Unopposed
- William R. McCain  
Unopposed

**County Council  
District 1**  
Vote for 1

- Marvin Ames
- Ernest Davis
- Eugenie Pinkett Shields

**Judge of the Circuit Court  
Circuit 1**  
Vote for up to 2

- Kathleen L. Beckstead  
Unopposed
- Matthew A. Maciarelo  
Unopposed

**State's Attorney**  
Vote for 1

- W. Seth Mitchell  
Unopposed

**Clerk of the Circuit Court**  
Vote for 1

- James "Bo" McAllister  
Unopposed

**Register of Wills**  
Vote for 1

- Karen A. Lemon  
Unopposed

**Judge of the Orphans' Court**  
Vote for up to 3

- Mark S. Bowen
- Melissa Pollitt Bright
- Dean Jones Evans
- Peter D. "Pete" Evans

**Democratic Central  
Committee Female**  
Vote for up to 4

- Carissa Antonis
- Michele Gregory
- Amanda L. Jackson
- Crystal Jones
- Sarah Meyers

**Democratic Central  
Committee Male**  
Vote for up to 4

- Jake Burdett
- Matthew Davidson
- Mike Folkoff
- Earle Hatton
- Gains Hawkins
- Jared Schablein
- Ivory P. Smith, Sr.
- J. D. Wilkins

**Board of Education  
District 1**  
Vote for 1

- Ruth Angelot
- Michelle Bradley
- Allen C. Brown

**End of Ballot** 

Official Ballot  
2018 Gubernatorial Primary Election  
June 26, 2018

BS DEM 14

State of Maryland, Wicomico County  
Democratic Ballot

Instructions

Making Selections



Fill in the oval to the left of the name of your choice. You must blacken the oval completely, and do not make any marks outside of the oval. You do not have to vote in every race.



Do not cross out or erase, or your vote may not count. If you make a mistake or a stray mark, you may ask for a new ballot.

Governor / Lt. Governor  
Vote for 1

Rushern L. Baker, III  
and  
Elizabeth Embry

Ralph Jaffe  
and  
Freda Jaffe

Ben Jealous  
and  
Susan Turnbull

James Hugh Jones, II  
and  
Charles S. Waters

Kevin Kamenetz  
and  
Valerie Ervin

Rich Madaleno  
and  
Luwanda Jenkins

Alec Ross  
and  
Julie C. Verratti

Jim Shea  
and  
Brandon M. Scott

Krish O'Mara Vignarajah  
and  
Sharon Y. Blake

Comptroller  
Vote for 1

Peter Franchot  
Unopposed

Attorney General  
Vote for 1

Brian E. Frosh  
Unopposed

U.S. Senator  
Vote for 1

Ben Cardin

Erik Jetmir

Chelsea Manning

Marcia H. Morgan

Jerome "Jerry" Segal

Richard "Rikki" Vaughn

Debbie "Rica" Wilson

Lih Young

Vote Both Sides



<b>Representative in Congress District 1</b> Vote for 1
<input type="radio"/> Michael Brown
<input type="radio"/> Jesse Colvin
<input type="radio"/> Allison Galbraith
<input type="radio"/> Erik Lane
<input type="radio"/> Michael Pullen
<input type="radio"/> Steve Worton

<b>State Senator District 37</b> Vote for 1
<input type="radio"/> Holly Wright Unopposed

<b>House of Delegates District 37A</b> Vote for 1
<input type="radio"/> Charles Cephas, Sr.
<input type="radio"/> Sheree Sample-Hughes

<b>County Executive</b> Vote for 1
<input type="radio"/> John William Hamilton Unopposed

<b>County Council At Large</b> Vote for up to 2
<input type="radio"/> Jamaad Gould Unopposed
<input type="radio"/> William R. McCain Unopposed

<b>Judge of the Circuit Court Circuit 1</b> Vote for up to 2
<input type="radio"/> Kathleen L. Beckstead Unopposed
<input type="radio"/> Matthew A. Maciarelo Unopposed

<b>State's Attorney</b> Vote for 1
<input type="radio"/> W. Seth Mitchell Unopposed

<b>Clerk of the Circuit Court</b> Vote for 1
<input type="radio"/> James "Bo" McAllister Unopposed

<b>Register of Wills</b> Vote for 1
<input type="radio"/> Karen A. Lemon Unopposed

<b>Judge of the Orphans' Court</b> Vote for up to 3
<input type="radio"/> Mark S. Bowen
<input type="radio"/> Melissa Pollitt Bright
<input type="radio"/> Dean Jones Evans
<input type="radio"/> Peter D. "Pete" Evans

<b>Democratic Central Committee Female</b> Vote for up to 4
<input type="radio"/> Carissa Antonis
<input type="radio"/> Michele Gregory
<input type="radio"/> Amanda L. Jackson
<input type="radio"/> Crystal Jones
<input type="radio"/> Sarah Meyers

<b>Democratic Central Committee Male</b> Vote for up to 4
<input type="radio"/> Jake Burdett
<input type="radio"/> Matthew Davidson
<input type="radio"/> Mike Folkoff
<input type="radio"/> Earle Hatton
<input type="radio"/> Gains Hawkins
<input type="radio"/> Jared Schablein
<input type="radio"/> Ivory P. Smith, Sr.
<input type="radio"/> J. D. Wilkins

**End of Ballot** 

Official Ballot  
2018 Gubernatorial Primary Election  
June 26, 2018

BS DEM 15

State of Maryland, Wicomico County  
Democratic Ballot

Instructions

Making Selections



Fill in the oval to the left of the name of your choice. You must blacken the oval completely, and do not make any marks outside of the oval. You do not have to vote in every race.



Do not cross out or erase, or your vote may not count. If you make a mistake or a stray mark, you may ask for a new ballot.

Governor / Lt. Governor  
Vote for 1

- Rushern L. Baker, III  
and  
Elizabeth Embry
- Ralph Jaffe  
and  
Freda Jaffe
- Ben Jealous  
and  
Susan Turnbull
- James Hugh Jones, II  
and  
Charles S. Waters
- Kevin Kamenetz  
and  
Valerie Ervin
- Rich Madaleno  
and  
Luwanda Jenkins
- Alec Ross  
and  
Julie C. Verratti
- Jim Shea  
and  
Brandon M. Scott
- Krish O'Mara Vignarajah  
and  
Sharon Y. Blake

Comptroller  
Vote for 1

- Peter Franchot  
Unopposed

Attorney General  
Vote for 1

- Brian E. Frosh  
Unopposed

U.S. Senator  
Vote for 1

- Ben Cardin
- Erik Jetmir
- Chelsea Manning
- Marcia H. Morgan
- Jerome "Jerry" Segal
- Richard "Rikki" Vaughn
- Debbie "Rica" Wilson
- Lih Young

Vote Both Sides



<b>Representative in Congress District 1</b> Vote for 1
<input type="radio"/> Michael Brown
<input type="radio"/> Jesse Colvin
<input type="radio"/> Allison Galbraith
<input type="radio"/> Erik Lane
<input type="radio"/> Michael Pullen
<input type="radio"/> Steve Worton

<b>State Senator District 37</b> Vote for 1
<input type="radio"/> Holly Wright Unopposed

<b>House of Delegates District 37A</b> Vote for 1
<input type="radio"/> Charles Cephas, Sr.
<input type="radio"/> Sheree Sample-Hughes

<b>County Executive</b> Vote for 1
<input type="radio"/> John William Hamilton Unopposed

<b>County Council At Large</b> Vote for up to 2
<input type="radio"/> Jamaad Gould Unopposed
<input type="radio"/> William R. McCain Unopposed

<b>County Council District 4</b> Vote for 1
<input type="radio"/> Josh Hastings Unopposed

<b>Judge of the Circuit Court Circuit 1</b> Vote for up to 2
<input type="radio"/> Kathleen L. Beckstead Unopposed
<input type="radio"/> Matthew A. Maciarelo Unopposed

<b>State's Attorney</b> Vote for 1
<input type="radio"/> W. Seth Mitchell Unopposed

<b>Clerk of the Circuit Court</b> Vote for 1
<input type="radio"/> James "Bo" McAllister Unopposed

<b>Register of Wills</b> Vote for 1
<input type="radio"/> Karen A. Lemon Unopposed

<b>Judge of the Orphans' Court</b> Vote for up to 3
<input type="radio"/> Mark S. Bowen
<input type="radio"/> Melissa Pollitt Bright
<input type="radio"/> Dean Jones Evans
<input type="radio"/> Peter D. "Pete" Evans

<b>Democratic Central Committee Female</b> Vote for up to 4
<input type="radio"/> Carissa Antonis
<input type="radio"/> Michele Gregory
<input type="radio"/> Amanda L. Jackson
<input type="radio"/> Crystal Jones
<input type="radio"/> Sarah Meyers

<b>Democratic Central Committee Male</b> Vote for up to 4
<input type="radio"/> Jake Burdett
<input type="radio"/> Matthew Davidson
<input type="radio"/> Mike Folkoff
<input type="radio"/> Earle Hatton
<input type="radio"/> Gains Hawkins
<input type="radio"/> Jared Schablein
<input type="radio"/> Ivory P. Smith, Sr.
<input type="radio"/> J. D. Wilkins

<b>Board of Education District 4</b> Vote for 1
<input type="radio"/> Seamus Benn
<input type="radio"/> David Plotts
<input type="radio"/> Ann Brittingham Suthowski

**End of Ballot** 



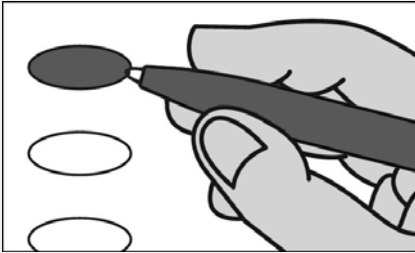
Official Ballot  
2018 Gubernatorial Primary Election  
June 26, 2018

BS NON 1

State of Maryland, Wicomico County  
Non-Partisan Ballot

**Instructions**

**Making Selections**



Fill in the oval to the left of the name of your choice. You must blacken the oval completely, and do not make any marks outside of the oval. You do not have to vote in every race.



Do not cross out or erase, or your vote may not count. If you make a mistake or a stray mark, you may ask for a new ballot.

Board of Education  
District 1

Vote for 1

- Ruth Angelot
- Michelle Bradley
- Allen C. Brown

End of Ballot



Proof

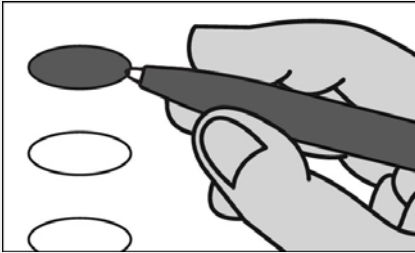
**Official Ballot  
2018 Gubernatorial Primary Election  
June 26, 2018**

**BS NON 2**

**State of Maryland, Wicomico County  
Non-Partisan Ballot**

**Instructions**

**Making Selections**



**Fill in the oval to the left of the name of your choice. You must blacken the oval completely, and do not make any marks outside of the oval. You do not have to vote in every race.**



**Do not cross out or erase, or your vote may not count. If you make a mistake or a stray mark, you may ask for a new ballot.**

**Board of Education  
District 4**

**Vote for 1**

- Seamus Benn**
- David Plotts**
- Ann Brittingham  
Suthowski**

**End of Ballot**



Proof

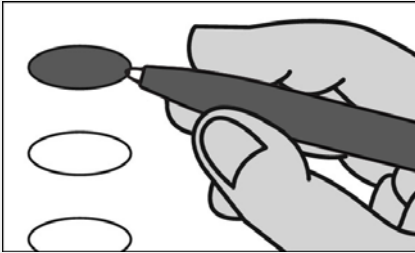
Official Ballot  
2018 Gubernatorial Primary Election  
June 26, 2018

BS NON 3

State of Maryland, Wicomico County  
Non-Partisan Ballot

**Instructions**

**Making Selections**



Fill in the oval to the left of the name of your choice. You must blacken the oval completely, and do not make any marks outside of the oval. You do not have to vote in every race.



Do not cross out or erase, or your vote may not count. If you make a mistake or a stray mark, you may ask for a new ballot.

Board of Education  
District 1

Vote for 1

- Ruth Angelot
- Michelle Bradley
- Allen C. Brown

End of Ballot



Proof