

Official Ballot
Gubernatorial Primary Election
June 23, 2026

BS DEM 1
001-001

State of Maryland, Kent County
Democratic Ballot

Instructions

Making Selections



Fill in the oval to the left of the name of your choice. You must blacken the oval completely, and do not make any marks outside of the oval. You do not have to vote in every race.



Do not cross out or erase, or your vote may not count. If you make a mistake or a stray mark, you may ask for a new ballot.

Governor / Lt. Governor
Vote for 1

- Eric S. Felber
and
LaTrece Hawkins Lytes
- Wes Moore
and
Aruna Miller

Comptroller
Vote for 1

- Brooke Elizabeth Lierman
Unopposed

Attorney General
Vote for 1

- Anthony G. Brown
Unopposed

Representative in Congress
District 1
Vote for 1

- Victor Allen Guidice
- Dan Schwartz
- George Walsh
- Randi White

State Senator
District 36
Vote for 1

- Nivek Johnson
- John Queen

House of Delegates
District 36
Caroline County
Vote for 1

- Nevin Crouse
Unopposed

House of Delegates
District 36
Cecil County
Vote for 1

- Michelle Ravert
Unopposed

House of Delegates
District 36
Queen Anne's County
Vote for 1

- Crystal Woodward
Unopposed

County Commissioner
Vote for up to 3

- Thad L. Bench
- John T. Carroll
- David Foster
- Sam Shoge

State's Attorney
Vote for 1

- Bryan DiGregory
Unopposed

Clerk of the Circuit Court
Vote for 1

- Sherise L. Kennard
Unopposed

Register of Wills
Vote for 1

- Kristi Osborn
Unopposed

Judge of the Orphans' Court
Vote for up to 3

- Elroy G. Boyer, Jr.
Unopposed
- Allan W. Schauber
Unopposed

Nomination Vacant

Vote Both Sides



**Democratic Central Committee
Vote for up to 10**

**No more than half of the members can be
elected from the same gender.**

Amanda C. Fry
Female

Edward Gallo
Male

Erik T. Gulbrandsen
Male

Piers Heriz-Smith
Male

Ashley A. Jensen
Female

Regina C. Oliver
Female

Melvin S. Rapelyea
Male

Pamela L. White
Female

Nomination Vacant

Nomination Vacant

End of Ballot



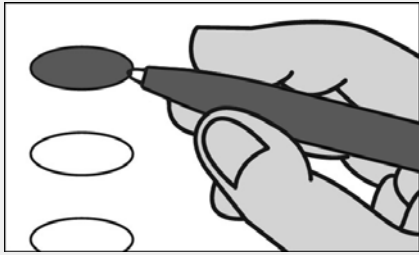
Official Ballot
Gubernatorial Primary Election
June 23, 2026

BS DEM 2
001-002

State of Maryland, Kent County
Democratic Ballot

Instructions

Making Selections



Fill in the oval to the left of the name of your choice. You must blacken the oval completely, and do not make any marks outside of the oval. You do not have to vote in every race.



Do not cross out or erase, or your vote may not count. If you make a mistake or a stray mark, you may ask for a new ballot.

Governor / Lt. Governor
Vote for 1

- Eric S. Felber and LaTrece Hawkins Lytes
- Wes Moore and Aruna Miller

Comptroller
Vote for 1

- Brooke Elizabeth Lierman Unopposed

Attorney General
Vote for 1

- Anthony G. Brown Unopposed

Representative in Congress
District 1
Vote for 1

- Victor Allen Guidice
- Dan Schwartz
- George Walish
- Randi White

State Senator
District 36
Vote for 1

- Nivek Johnson
- John Queen

House of Delegates
District 36
Caroline County
Vote for 1

- Nevin Crouse Unopposed

House of Delegates
District 36
Cecil County
Vote for 1

- Michelle Ravert Unopposed

House of Delegates
District 36
Queen Anne's County
Vote for 1

- Crystal Woodward Unopposed

County Commissioner
Vote for up to 3

- Thad L. Bench
- John T. Carroll
- David Foster
- Sam Shoge

State's Attorney
Vote for 1

- Bryan DiGregory Unopposed

Clerk of the Circuit Court
Vote for 1

- Sherise L. Kennard Unopposed

Register of Wills
Vote for 1

- Kristi Osborn Unopposed

Judge of the Orphans' Court
Vote for up to 3

- Elroy G. Boyer, Jr. Unopposed
- Allan W. Schauber Unopposed

Nomination Vacant

Vote Both Sides



**Democratic Central Committee
Vote for up to 10**

**No more than half of the members can be
elected from the same gender.**

Amanda C. Fry
Female

Edward Gallo
Male

Erik T. Gulbrandsen
Male

Piers Heriz-Smith
Male

Ashley A. Jensen
Female

Regina C. Oliver
Female

Melvin S. Rapelyea
Male

Pamela L. White
Female

Nomination Vacant

Nomination Vacant

End of Ballot



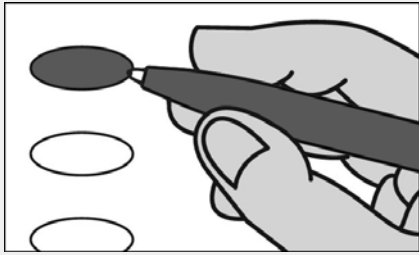
Official Ballot
Gubernatorial Primary Election
June 23, 2026

BS DEM 3
002-001

State of Maryland, Kent County
Democratic Ballot

Instructions

Making Selections



Fill in the oval to the left of the name of your choice. You must blacken the oval completely, and do not make any marks outside of the oval. You do not have to vote in every race.



Do not cross out or erase, or your vote may not count. If you make a mistake or a stray mark, you may ask for a new ballot.

Governor / Lt. Governor
Vote for 1

- Eric S. Felber and LaTrece Hawkins Lytes
- Wes Moore and Aruna Miller

Comptroller
Vote for 1

- Brooke Elizabeth Lierman Unopposed

Attorney General
Vote for 1

- Anthony G. Brown Unopposed

Representative in Congress
District 1
Vote for 1

- Victor Allen Guidice
- Dan Schwartz
- George Walsh
- Randi White

State Senator
District 36
Vote for 1

- Nivek Johnson
- John Queen

House of Delegates
District 36
Caroline County
Vote for 1

- Nevin Crouse Unopposed

House of Delegates
District 36
Cecil County
Vote for 1

- Michelle Ravert Unopposed

House of Delegates
District 36
Queen Anne's County
Vote for 1

- Crystal Woodward Unopposed

County Commissioner
Vote for up to 3

- Thad L. Bench
- John T. Carroll
- David Foster
- Sam Shoge

State's Attorney
Vote for 1

- Bryan DiGregory Unopposed

Clerk of the Circuit Court
Vote for 1

- Sherise L. Kennard Unopposed

Register of Wills
Vote for 1

- Kristi Osborn Unopposed

Judge of the Orphans' Court
Vote for up to 3

- Elroy G. Boyer, Jr. Unopposed
- Allan W. Schauber Unopposed

Nomination Vacant

Vote Both Sides



**Democratic Central Committee
Vote for up to 10**

**No more than half of the members can be
elected from the same gender.**

Amanda C. Fry
Female

Edward Gallo
Male

Erik T. Gulbrandsen
Male

Piers Heriz-Smith
Male

Ashley A. Jensen
Female

Regina C. Oliver
Female

Melvin S. Rapelyea
Male

Pamela L. White
Female

Nomination Vacant

Nomination Vacant

End of Ballot



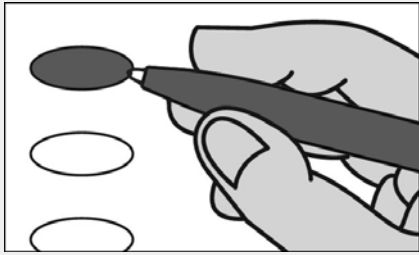
Official Ballot
Gubernatorial Primary Election
June 23, 2026

BS DEM 4
003-001

State of Maryland, Kent County
Democratic Ballot

Instructions

Making Selections



Fill in the oval to the left of the name of your choice. You must blacken the oval completely, and do not make any marks outside of the oval. You do not have to vote in every race.



Do not cross out or erase, or your vote may not count. If you make a mistake or a stray mark, you may ask for a new ballot.

Governor / Lt. Governor
Vote for 1

- Eric S. Felber
and
LaTrece Hawkins Lytes
- Wes Moore
and
Aruna Miller

Comptroller
Vote for 1

- Brooke Elizabeth Lierman
Unopposed

Attorney General
Vote for 1

- Anthony G. Brown
Unopposed

Representative in Congress
District 1
Vote for 1

- Victor Allen Guidice
- Dan Schwartz
- George Walish
- Randi White

State Senator
District 36
Vote for 1

- Nivek Johnson
- John Queen

House of Delegates
District 36
Caroline County
Vote for 1

- Nevin Crouse
Unopposed

House of Delegates
District 36
Cecil County
Vote for 1

- Michelle Ravert
Unopposed

House of Delegates
District 36
Queen Anne's County
Vote for 1

- Crystal Woodward
Unopposed

County Commissioner
Vote for up to 3

- Thad L. Bench
- John T. Carroll
- David Foster
- Sam Shoge

State's Attorney
Vote for 1

- Bryan DiGregory
Unopposed

Clerk of the Circuit Court
Vote for 1

- Sherise L. Kennard
Unopposed

Register of Wills
Vote for 1

- Kristi Osborn
Unopposed

Judge of the Orphans' Court
Vote for up to 3

- Elroy G. Boyer, Jr.
Unopposed
- Allan W. Schauber
Unopposed

Nomination Vacant

Vote Both Sides



**Democratic Central Committee
Vote for up to 10**

**No more than half of the members can be
elected from the same gender.**

Amanda C. Fry
Female

Edward Gallo
Male

Erik T. Gulbrandsen
Male

Piers Heriz-Smith
Male

Ashley A. Jensen
Female

Regina C. Oliver
Female

Melvin S. Rapelyea
Male

Pamela L. White
Female

Nomination Vacant

Nomination Vacant

End of Ballot



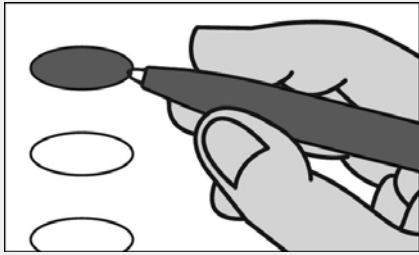
Official Ballot
Gubernatorial Primary Election
June 23, 2026

BS DEM 5
003-002

State of Maryland, Kent County
Democratic Ballot

Instructions

Making Selections



Fill in the oval to the left of the name of your choice. You must blacken the oval completely, and do not make any marks outside of the oval. You do not have to vote in every race.



Do not cross out or erase, or your vote may not count. If you make a mistake or a stray mark, you may ask for a new ballot.

Governor / Lt. Governor
Vote for 1

- Eric S. Felber and LaTrece Hawkins Lytes
- Wes Moore and Aruna Miller

Comptroller
Vote for 1

- Brooke Elizabeth Lierman Unopposed

Attorney General
Vote for 1

- Anthony G. Brown Unopposed

Representative in Congress
District 1
Vote for 1

- Victor Allen Guidice
- Dan Schwartz
- George Walsh
- Randi White

State Senator
District 36
Vote for 1

- Nivek Johnson
- John Queen

House of Delegates
District 36
Caroline County
Vote for 1

- Nevin Crouse Unopposed

House of Delegates
District 36
Cecil County
Vote for 1

- Michelle Ravert Unopposed

House of Delegates
District 36
Queen Anne's County
Vote for 1

- Crystal Woodward Unopposed

County Commissioner
Vote for up to 3

- Thad L. Bench
- John T. Carroll
- David Foster
- Sam Shoge

State's Attorney
Vote for 1

- Bryan DiGregory Unopposed

Clerk of the Circuit Court
Vote for 1

- Sherise L. Kennard Unopposed

Register of Wills
Vote for 1

- Kristi Osborn Unopposed

Judge of the Orphans' Court
Vote for up to 3

- Elroy G. Boyer, Jr. Unopposed
- Allan W. Schauber Unopposed

Nomination Vacant

Vote Both Sides



**Democratic Central Committee
Vote for up to 10**

**No more than half of the members can be
elected from the same gender.**

Amanda C. Fry
Female

Edward Gallo
Male

Erik T. Gulbrandsen
Male

Piers Heriz-Smith
Male

Ashley A. Jensen
Female

Regina C. Oliver
Female

Melvin S. Rapelyea
Male

Pamela L. White
Female

Nomination Vacant

Nomination Vacant

End of Ballot



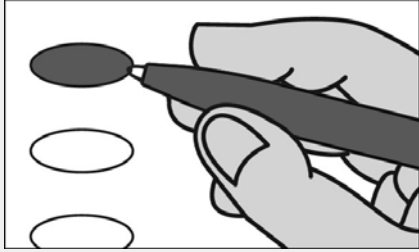
Official Ballot
Gubernatorial Primary Election
June 23, 2026

BS DEM 6
004-001

State of Maryland, Kent County
Democratic Ballot

Instructions

Making Selections



Fill in the oval to the left of the name of your choice. You must blacken the oval completely, and do not make any marks outside of the oval. You do not have to vote in every race.



Do not cross out or erase, or your vote may not count. If you make a mistake or a stray mark, you may ask for a new ballot.

Governor / Lt. Governor
Vote for 1

- Eric S. Felber and LaTrece Hawkins Lytes
- Wes Moore and Aruna Miller

Comptroller
Vote for 1

- Brooke Elizabeth Lierman Unopposed

Attorney General
Vote for 1

- Anthony G. Brown Unopposed

Representative in Congress
District 1
Vote for 1

- Victor Allen Guidice
- Dan Schwartz
- George Walsh
- Randi White

State Senator
District 36
Vote for 1

- Nivek Johnson
- John Queen

House of Delegates
District 36
Caroline County
Vote for 1

- Nevin Crouse Unopposed

House of Delegates
District 36
Cecil County
Vote for 1

- Michelle Ravert Unopposed

House of Delegates
District 36
Queen Anne's County
Vote for 1

- Crystal Woodward Unopposed

County Commissioner
Vote for up to 3

- Thad L. Bench
- John T. Carroll
- David Foster
- Sam Shoge

State's Attorney
Vote for 1

- Bryan DiGregory Unopposed

Clerk of the Circuit Court
Vote for 1

- Sherise L. Kennard Unopposed

Register of Wills
Vote for 1

- Kristi Osborn Unopposed

Judge of the Orphans' Court
Vote for up to 3

- Elroy G. Boyer, Jr. Unopposed
- Allan W. Schauber Unopposed

Nomination Vacant

Vote Both Sides



**Democratic Central Committee
Vote for up to 10**

**No more than half of the members can be
elected from the same gender.**

Amanda C. Fry
Female

Edward Gallo
Male

Erik T. Gulbrandsen
Male

Piers Heriz-Smith
Male

Ashley A. Jensen
Female

Regina C. Oliver
Female

Melvin S. Rapelyea
Male

Pamela L. White
Female

Nomination Vacant

Nomination Vacant

End of Ballot



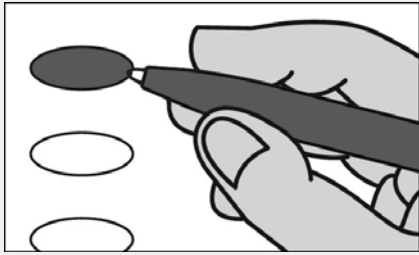
Official Ballot
Gubernatorial Primary Election
June 23, 2026

BS DEM 7
004-002

State of Maryland, Kent County
Democratic Ballot

Instructions

Making Selections



Fill in the oval to the left of the name of your choice. You must blacken the oval completely, and do not make any marks outside of the oval. You do not have to vote in every race.



Do not cross out or erase, or your vote may not count. If you make a mistake or a stray mark, you may ask for a new ballot.

Governor / Lt. Governor
Vote for 1

- Eric S. Felber and LaTrece Hawkins Lytes
- Wes Moore and Aruna Miller

Comptroller
Vote for 1

- Brooke Elizabeth Lierman Unopposed

Attorney General
Vote for 1

- Anthony G. Brown Unopposed

Representative in Congress
District 1
Vote for 1

- Victor Allen Guidice
- Dan Schwartz
- George Walish
- Randi White

State Senator
District 36
Vote for 1

- Nivek Johnson
- John Queen

House of Delegates
District 36
Caroline County
Vote for 1

- Nevin Crouse Unopposed

House of Delegates
District 36
Cecil County
Vote for 1

- Michelle Ravert Unopposed

House of Delegates
District 36
Queen Anne's County
Vote for 1

- Crystal Woodward Unopposed

County Commissioner
Vote for up to 3

- Thad L. Bench
- John T. Carroll
- David Foster
- Sam Shoge

State's Attorney
Vote for 1

- Bryan DiGregory Unopposed

Clerk of the Circuit Court
Vote for 1

- Sherise L. Kennard Unopposed

Register of Wills
Vote for 1

- Kristi Osborn Unopposed

Judge of the Orphans' Court
Vote for up to 3

- Elroy G. Boyer, Jr. Unopposed
- Allan W. Schauber Unopposed

Nomination Vacant

Vote Both Sides



**Democratic Central Committee
Vote for up to 10**

**No more than half of the members can be
elected from the same gender.**

Amanda C. Fry
Female

Edward Gallo
Male

Erik T. Gulbrandsen
Male

Piers Heriz-Smith
Male

Ashley A. Jensen
Female

Regina C. Oliver
Female

Melvin S. Rapelyea
Male

Pamela L. White
Female

Nomination Vacant

Nomination Vacant

End of Ballot



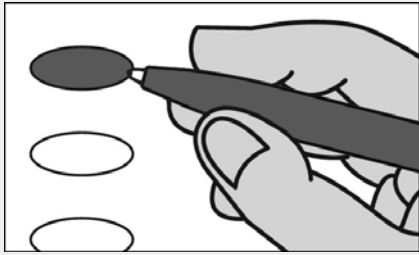
Official Ballot
Gubernatorial Primary Election
June 23, 2026

BS DEM 8
005-001

State of Maryland, Kent County
Democratic Ballot

Instructions

Making Selections



Fill in the oval to the left of the name of your choice. You must blacken the oval completely, and do not make any marks outside of the oval. You do not have to vote in every race.



Do not cross out or erase, or your vote may not count. If you make a mistake or a stray mark, you may ask for a new ballot.

Governor / Lt. Governor
Vote for 1

- Eric S. Felber
and
LaTrece Hawkins Lytes
- Wes Moore
and
Aruna Miller

Comptroller
Vote for 1

- Brooke Elizabeth Lierman
Unopposed

Attorney General
Vote for 1

- Anthony G. Brown
Unopposed

Representative in Congress
District 1
Vote for 1

- Victor Allen Guidice
- Dan Schwartz
- George Walsh
- Randi White

State Senator
District 36
Vote for 1

- Nivek Johnson
- John Queen

House of Delegates
District 36
Caroline County
Vote for 1

- Nevin Crouse
Unopposed

House of Delegates
District 36
Cecil County
Vote for 1

- Michelle Ravert
Unopposed

House of Delegates
District 36
Queen Anne's County
Vote for 1

- Crystal Woodward
Unopposed

County Commissioner
Vote for up to 3

- Thad L. Bench
- John T. Carroll
- David Foster
- Sam Shoge

State's Attorney
Vote for 1

- Bryan DiGregory
Unopposed

Clerk of the Circuit Court
Vote for 1

- Sherise L. Kennard
Unopposed

Register of Wills
Vote for 1

- Kristi Osborn
Unopposed

Judge of the Orphans' Court
Vote for up to 3

- Elroy G. Boyer, Jr.
Unopposed
- Allan W. Schauber
Unopposed

Nomination Vacant

Vote Both Sides



**Democratic Central Committee
Vote for up to 10**

**No more than half of the members can be
elected from the same gender.**

Amanda C. Fry
Female

Edward Gallo
Male

Erik T. Gulbrandsen
Male

Piers Heriz-Smith
Male

Ashley A. Jensen
Female

Regina C. Oliver
Female

Melvin S. Rapelyea
Male

Pamela L. White
Female

Nomination Vacant

Nomination Vacant

End of Ballot



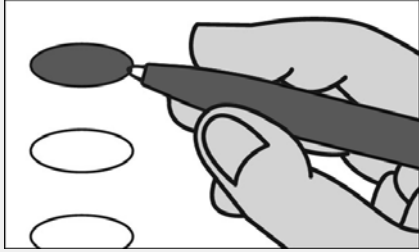
Official Ballot
Gubernatorial Primary Election
June 23, 2026

BS DEM 9
006-001

State of Maryland, Kent County
Democratic Ballot

Instructions

Making Selections



Fill in the oval to the left of the name of your choice. You must blacken the oval completely, and do not make any marks outside of the oval. You do not have to vote in every race.



Do not cross out or erase, or your vote may not count. If you make a mistake or a stray mark, you may ask for a new ballot.

Governor / Lt. Governor
Vote for 1

- Eric S. Felber and LaTrece Hawkins Lytes
- Wes Moore and Aruna Miller

Comptroller
Vote for 1

- Brooke Elizabeth Lierman Unopposed

Attorney General
Vote for 1

- Anthony G. Brown Unopposed

Representative in Congress
District 1
Vote for 1

- Victor Allen Guidice
- Dan Schwartz
- George Walsh
- Randi White

State Senator
District 36
Vote for 1

- Nivek Johnson
- John Queen

House of Delegates
District 36
Caroline County
Vote for 1

- Nevin Crouse Unopposed

House of Delegates
District 36
Cecil County
Vote for 1

- Michelle Ravert Unopposed

House of Delegates
District 36
Queen Anne's County
Vote for 1

- Crystal Woodward Unopposed

County Commissioner
Vote for up to 3

- Thad L. Bench
- John T. Carroll
- David Foster
- Sam Shoge

State's Attorney
Vote for 1

- Bryan DiGregory Unopposed

Clerk of the Circuit Court
Vote for 1

- Sherise L. Kennard Unopposed

Register of Wills
Vote for 1

- Kristi Osborn Unopposed

Judge of the Orphans' Court
Vote for up to 3

- Elroy G. Boyer, Jr. Unopposed
- Allan W. Schauber Unopposed

Nomination Vacant

Vote Both Sides



**Democratic Central Committee
Vote for up to 10**

**No more than half of the members can be
elected from the same gender.**

Amanda C. Fry
Female

Edward Gallo
Male

Erik T. Gulbrandsen
Male

Piers Heriz-Smith
Male

Ashley A. Jensen
Female

Regina C. Oliver
Female

Melvin S. Rapelyea
Male

Pamela L. White
Female

Nomination Vacant

Nomination Vacant

End of Ballot



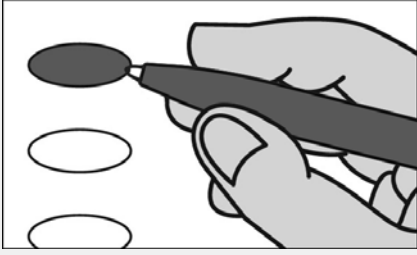
Official Ballot
Gubernatorial Primary Election
June 23, 2026

BS DEM 10
007-001

State of Maryland, Kent County
Democratic Ballot

Instructions

Making Selections



Fill in the oval to the left of the name of your choice. You must blacken the oval completely, and do not make any marks outside of the oval. You do not have to vote in every race.



Do not cross out or erase, or your vote may not count. If you make a mistake or a stray mark, you may ask for a new ballot.

Governor / Lt. Governor
Vote for 1

- Eric S. Felber and LaTrece Hawkins Lytes
- Wes Moore and Aruna Miller

Comptroller
Vote for 1

- Brooke Elizabeth Lierman Unopposed

Attorney General
Vote for 1

- Anthony G. Brown Unopposed

Representative in Congress
District 1
Vote for 1

- Victor Allen Guidice
- Dan Schwartz
- George Walsh
- Randi White

State Senator
District 36
Vote for 1

- Nivek Johnson
- John Queen

House of Delegates
District 36
Caroline County
Vote for 1

- Nevin Crouse Unopposed

House of Delegates
District 36
Cecil County
Vote for 1

- Michelle Ravert Unopposed

House of Delegates
District 36
Queen Anne's County
Vote for 1

- Crystal Woodward Unopposed

County Commissioner
Vote for up to 3

- Thad L. Bench
- John T. Carroll
- David Foster
- Sam Shoge

State's Attorney
Vote for 1

- Bryan DiGregory Unopposed

Clerk of the Circuit Court
Vote for 1

- Sherise L. Kennard Unopposed

Register of Wills
Vote for 1

- Kristi Osborn Unopposed

Judge of the Orphans' Court
Vote for up to 3

- Elroy G. Boyer, Jr. Unopposed
- Allan W. Schauber Unopposed

Nomination Vacant

Vote Both Sides



**Democratic Central Committee
Vote for up to 10**

**No more than half of the members can be
elected from the same gender.**

Amanda C. Fry
Female

Edward Gallo
Male

Erik T. Gulbrandsen
Male

Piers Heriz-Smith
Male

Ashley A. Jensen
Female

Regina C. Oliver
Female

Melvin S. Rapelyea
Male

Pamela L. White
Female

Nomination Vacant

Nomination Vacant

End of Ballot



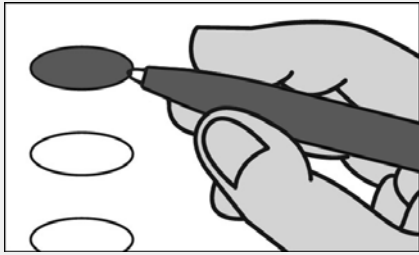
Official Ballot
Gubernatorial Primary Election
June 23, 2026

BS REP 1
001-001

State of Maryland, Kent County
Republican Ballot

Instructions

Making Selections



Fill in the oval to the left of the name of your choice. You must blacken the oval completely, and do not make any marks outside of the oval. You do not have to vote in every race.



Do not cross out or erase, or your vote may not count. If you make a mistake or a stray mark, you may ask for a new ballot.

Governor / Lt. Governor
Vote for 1

Carl A. Brunner, Jr.
and
Kevin L. Rhodes, Sr.

L. D. Burkindine
and
Jeremy M. Shifflett

Dan Cox
and
Rob Krop

Ed Hale
and
Tyrone Keys, Jr.

Douglas Larcomb
and
Martina D. Duncan

John A. Myrick
and
Brenda J. Thiam

Michael Oakes
and
Ronald W. Abend

Nancy Jane Taylor
and
Rachel Hannah "Mohawk"
Swift

Shannon Wright
and
Reba A. Hawkins

House of Delegates
District 36

Caroline County
Vote for 1

Jeff Ghrist
Unopposed

House of Delegates
District 36

Kent County
Vote for 1

Jay A. Jacobs
Unopposed

House of Delegates
District 36

Queen Anne's County
Vote for 1

Steve Arentz
Unopposed

County Commissioner
Vote for up to 3

Ron Fithian
Unopposed

Albert Nickerson
Unopposed

John F. Price
Unopposed

Comptroller
Vote for 1

Sonya Dunn
Unopposed

State's Attorney
Vote for 1

Matt Crouch
Unopposed

Attorney General
Vote for 1

James B. Rutledge, III
Unopposed

Judge of the Orphans' Court
Vote for up to 3

Joseph L. Holt
Unopposed

Nomination Vacant

Nomination Vacant

Representative in Congress
District 1
Vote for 1

Chris Bruneau

Andy Harris

State Senator
District 36
Vote for 1

Steve Hershey
Unopposed

Sheriff
Vote for 1

Dennis W. Hickman, Jr.
Unopposed

Vote Both Sides



Republican Central Committee

Vote for up to 7

Benjamin F. Ray
Unopposed

Mariam Azra Satchell
Unopposed

Dawn P. Sutton
Unopposed

Leonard A. Thompson
Unopposed

Nomination Vacant

Nomination Vacant

Nomination Vacant

End of Ballot



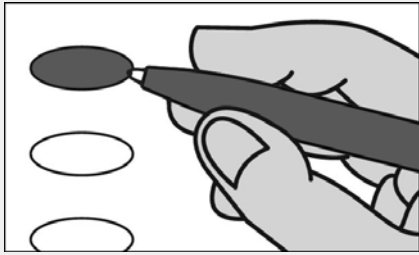
**Official Ballot
Gubernatorial Primary Election
June 23, 2026**

**BS REP 2
001-002**

**State of Maryland, Kent County
Republican Ballot**

Instructions

Making Selections



Fill in the oval to the left of the name of your choice. You must blacken the oval completely, and do not make any marks outside of the oval. You do not have to vote in every race.



Do not cross out or erase, or your vote may not count. If you make a mistake or a stray mark, you may ask for a new ballot.

**Governor / Lt. Governor
Vote for 1**

**Carl A. Brunner, Jr.
and
Kevin L. Rhodes, Sr.**

**L. D. Burkindine
and
Jeremy M. Shifflett**

**Dan Cox
and
Rob Krop**

**Ed Hale
and
Tyrone Keys, Jr.**

**Douglas Larcomb
and
Martina D. Duncan**

**John A. Myrick
and
Brenda J. Thiam**

**Michael Oakes
and
Ronald W. Abend**

**Nancy Jane Taylor
and
Rachel Hannah "Mohawk"
Swift**

**Shannon Wright
and
Reba A. Hawkins**

**House of Delegates
District 36**

**Caroline County
Vote for 1**

**Jeff Ghrist
Unopposed**

**House of Delegates
District 36**

**Kent County
Vote for 1**

**Jay A. Jacobs
Unopposed**

**House of Delegates
District 36**

**Queen Anne's County
Vote for 1**

**Steve Arentz
Unopposed**

**County Commissioner
Vote for up to 3**

**Ron Fithian
Unopposed**

**Albert Nickerson
Unopposed**

**John F. Price
Unopposed**

**Comptroller
Vote for 1**

**Sonya Dunn
Unopposed**

**State's Attorney
Vote for 1**

**Matt Crouch
Unopposed**

**Attorney General
Vote for 1**

**James B. Rutledge, III
Unopposed**

**Judge of the Orphans' Court
Vote for up to 3**

**Joseph L. Holt
Unopposed**

Nomination Vacant

Nomination Vacant

**Representative in Congress
District 1
Vote for 1**

Chris Bruneau

Andy Harris

**Sheriff
Vote for 1**

**Dennis W. Hickman, Jr.
Unopposed**

**State Senator
District 36
Vote for 1**

**Steve Hershey
Unopposed**

Vote Both Sides



Republican Central Committee

Vote for up to 7

Benjamin F. Ray
Unopposed

Mariam Azra Satchell
Unopposed

Dawn P. Sutton
Unopposed

Leonard A. Thompson
Unopposed

Nomination Vacant

Nomination Vacant

Nomination Vacant

End of Ballot



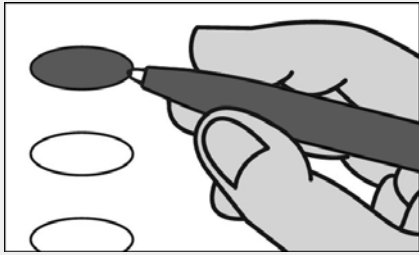
Official Ballot
Gubernatorial Primary Election
June 23, 2026

BS REP 3
002-001

State of Maryland, Kent County
Republican Ballot

Instructions

Making Selections



Fill in the oval to the left of the name of your choice. You must blacken the oval completely, and do not make any marks outside of the oval. You do not have to vote in every race.



Do not cross out or erase, or your vote may not count. If you make a mistake or a stray mark, you may ask for a new ballot.

Governor / Lt. Governor
Vote for 1

Carl A. Brunner, Jr.
and
Kevin L. Rhodes, Sr.

L. D. Burkindine
and
Jeremy M. Shifflett

Dan Cox
and
Rob Krop

Ed Hale
and
Tyrone Keys, Jr.

Douglas Larcomb
and
Martina D. Duncan

John A. Myrick
and
Brenda J. Thiam

Michael Oakes
and
Ronald W. Abend

Nancy Jane Taylor
and
Rachel Hannah "Mohawk"
Swift

Shannon Wright
and
Reba A. Hawkins

House of Delegates
District 36

Caroline County
Vote for 1

Jeff Ghrist
Unopposed

House of Delegates
District 36

Kent County
Vote for 1

Jay A. Jacobs
Unopposed

House of Delegates
District 36

Queen Anne's County
Vote for 1

Steve Arentz
Unopposed

County Commissioner
Vote for up to 3

Ron Fithian
Unopposed

Albert Nickerson
Unopposed

John F. Price
Unopposed

Comptroller
Vote for 1

Sonya Dunn
Unopposed

State's Attorney
Vote for 1

Matt Crouch
Unopposed

Attorney General
Vote for 1

James B. Rutledge, III
Unopposed

Judge of the Orphans' Court
Vote for up to 3

Joseph L. Holt
Unopposed

Nomination Vacant

Nomination Vacant

Representative in Congress
District 1
Vote for 1

Chris Bruneau
 Andy Harris

State Senator
District 36
Vote for 1

Steve Hershey
Unopposed

Sheriff
Vote for 1

Dennis W. Hickman, Jr.
Unopposed

Vote Both Sides



Republican Central Committee

Vote for up to 7

Benjamin F. Ray
Unopposed

Mariam Azra Satchell
Unopposed

Dawn P. Sutton
Unopposed

Leonard A. Thompson
Unopposed

Nomination Vacant

Nomination Vacant

Nomination Vacant

End of Ballot



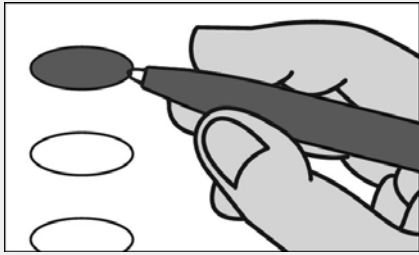
Official Ballot
Gubernatorial Primary Election
June 23, 2026

BS REP 4
003-001

State of Maryland, Kent County
Republican Ballot

Instructions

Making Selections



Fill in the oval to the left of the name of your choice. You must blacken the oval completely, and do not make any marks outside of the oval. You do not have to vote in every race.



Do not cross out or erase, or your vote may not count. If you make a mistake or a stray mark, you may ask for a new ballot.

Governor / Lt. Governor
Vote for 1

Carl A. Brunner, Jr.
and
Kevin L. Rhodes, Sr.

L. D. Burkindine
and
Jeremy M. Shifflett

Dan Cox
and
Rob Krop

Ed Hale
and
Tyrone Keys, Jr.

Douglas Larcomb
and
Martina D. Duncan

John A. Myrick
and
Brenda J. Thiam

Michael Oakes
and
Ronald W. Abend

Nancy Jane Taylor
and
Rachel Hannah "Mohawk"
Swift

Shannon Wright
and
Reba A. Hawkins

House of Delegates
District 36

Caroline County
Vote for 1

Jeff Ghrist
Unopposed

House of Delegates
District 36

Kent County
Vote for 1

Jay A. Jacobs
Unopposed

House of Delegates
District 36

Queen Anne's County
Vote for 1

Steve Arentz
Unopposed

County Commissioner
Vote for up to 3

Ron Fithian
Unopposed

Albert Nickerson
Unopposed

John F. Price
Unopposed

Comptroller
Vote for 1

Sonya Dunn
Unopposed

State's Attorney
Vote for 1

Matt Crouch
Unopposed

Attorney General
Vote for 1

James B. Rutledge, III
Unopposed

Judge of the Orphans' Court
Vote for up to 3

Joseph L. Holt
Unopposed

Nomination Vacant

Nomination Vacant

Representative in Congress
District 1
Vote for 1

Chris Bruneau
 Andy Harris

State Senator
District 36
Vote for 1

Steve Hershey
Unopposed

Sheriff
Vote for 1

Dennis W. Hickman, Jr.
Unopposed

Vote Both Sides



Republican Central Committee

Vote for up to 7

Benjamin F. Ray
Unopposed

Mariam Azra Satchell
Unopposed

Dawn P. Sutton
Unopposed

Leonard A. Thompson
Unopposed

Nomination Vacant

Nomination Vacant

Nomination Vacant

End of Ballot



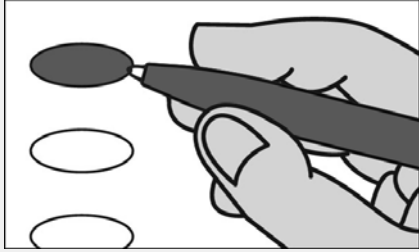
Official Ballot
Gubernatorial Primary Election
June 23, 2026

BS REP 5
003-002

State of Maryland, Kent County
Republican Ballot

Instructions

Making Selections



Fill in the oval to the left of the name of your choice. You must blacken the oval completely, and do not make any marks outside of the oval. You do not have to vote in every race.



Do not cross out or erase, or your vote may not count. If you make a mistake or a stray mark, you may ask for a new ballot.

Governor / Lt. Governor
Vote for 1

Carl A. Brunner, Jr.
and
Kevin L. Rhodes, Sr.

L. D. Burkindine
and
Jeremy M. Shifflett

Dan Cox
and
Rob Krop

Ed Hale
and
Tyrone Keys, Jr.

Douglas Larcomb
and
Martina D. Duncan

John A. Myrick
and
Brenda J. Thiam

Michael Oakes
and
Ronald W. Abend

Nancy Jane Taylor
and
Rachel Hannah "Mohawk"
Swift

Shannon Wright
and
Reba A. Hawkins

House of Delegates
District 36
Caroline County
Vote for 1

Jeff Ghrist
Unopposed

House of Delegates
District 36
Kent County
Vote for 1

Jay A. Jacobs
Unopposed

House of Delegates
District 36
Queen Anne's County
Vote for 1

Steve Arentz
Unopposed

County Commissioner
Vote for up to 3

Ron Fithian
Unopposed

Albert Nickerson
Unopposed

John F. Price
Unopposed

Comptroller
Vote for 1

Sonya Dunn
Unopposed

State's Attorney
Vote for 1

Matt Crouch
Unopposed

Attorney General
Vote for 1

James B. Rutledge, III
Unopposed

Judge of the Orphans' Court
Vote for up to 3

Joseph L. Holt
Unopposed

Nomination Vacant

Nomination Vacant

Representative in Congress
District 1
Vote for 1

Chris Bruneau
 Andy Harris

State Senator
District 36
Vote for 1

Steve Hershey
Unopposed

Sheriff
Vote for 1

Dennis W. Hickman, Jr.
Unopposed

Vote Both Sides



Republican Central Committee

Vote for up to 7

Benjamin F. Ray
Unopposed

Mariam Azra Satchell
Unopposed

Dawn P. Sutton
Unopposed

Leonard A. Thompson
Unopposed

Nomination Vacant

Nomination Vacant

Nomination Vacant

End of Ballot



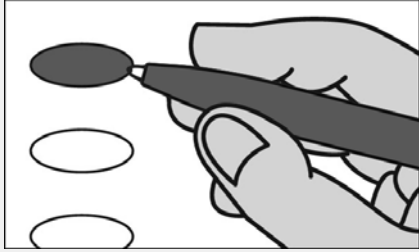
Official Ballot
Gubernatorial Primary Election
June 23, 2026

BS REP 6
004-001

State of Maryland, Kent County
Republican Ballot

Instructions

Making Selections



Fill in the oval to the left of the name of your choice. You must blacken the oval completely, and do not make any marks outside of the oval. You do not have to vote in every race.



Do not cross out or erase, or your vote may not count. If you make a mistake or a stray mark, you may ask for a new ballot.

Governor / Lt. Governor
Vote for 1

Carl A. Brunner, Jr.
and
Kevin L. Rhodes, Sr.

L. D. Burkindine
and
Jeremy M. Shifflett

Dan Cox
and
Rob Krop

Ed Hale
and
Tyrone Keys, Jr.

Douglas Larcomb
and
Martina D. Duncan

John A. Myrick
and
Brenda J. Thiam

Michael Oakes
and
Ronald W. Abend

Nancy Jane Taylor
and
Rachel Hannah "Mohawk"
Swift

Shannon Wright
and
Reba A. Hawkins

House of Delegates
District 36
Caroline County
Vote for 1

Jeff Ghrist
Unopposed

House of Delegates
District 36
Kent County
Vote for 1

Jay A. Jacobs
Unopposed

House of Delegates
District 36
Queen Anne's County
Vote for 1

Steve Arentz
Unopposed

County Commissioner
Vote for up to 3

Ron Fithian
Unopposed

Albert Nickerson
Unopposed

John F. Price
Unopposed

Comptroller
Vote for 1

Sonya Dunn
Unopposed

State's Attorney
Vote for 1

Matt Crouch
Unopposed

Attorney General
Vote for 1

James B. Rutledge, III
Unopposed

Judge of the Orphans' Court
Vote for up to 3

Joseph L. Holt
Unopposed

Nomination Vacant

Nomination Vacant

Representative in Congress
District 1
Vote for 1

Chris Bruneau
 Andy Harris

State Senator
District 36
Vote for 1

Steve Hershey
Unopposed

Sheriff
Vote for 1

Dennis W. Hickman, Jr.
Unopposed

Vote Both Sides



Republican Central Committee

Vote for up to 7

Benjamin F. Ray
Unopposed

Mariam Azra Satchell
Unopposed

Dawn P. Sutton
Unopposed

Leonard A. Thompson
Unopposed

Nomination Vacant

Nomination Vacant

Nomination Vacant

End of Ballot



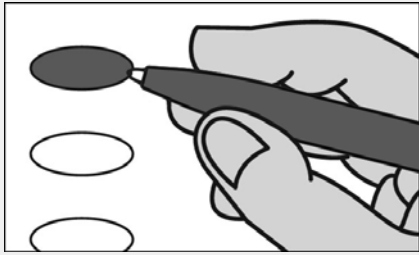
Official Ballot
Gubernatorial Primary Election
June 23, 2026

BS REP 7
004-002

State of Maryland, Kent County
Republican Ballot

Instructions

Making Selections



Fill in the oval to the left of the name of your choice. You must blacken the oval completely, and do not make any marks outside of the oval. You do not have to vote in every race.



Do not cross out or erase, or your vote may not count. If you make a mistake or a stray mark, you may ask for a new ballot.

Governor / Lt. Governor
Vote for 1

Carl A. Brunner, Jr.
and
Kevin L. Rhodes, Sr.

L. D. Burkindine
and
Jeremy M. Shifflett

Dan Cox
and
Rob Krop

Ed Hale
and
Tyrone Keys, Jr.

Douglas Larcomb
and
Martina D. Duncan

John A. Myrick
and
Brenda J. Thiam

Michael Oakes
and
Ronald W. Abend

Nancy Jane Taylor
and
Rachel Hannah "Mohawk"
Swift

Shannon Wright
and
Reba A. Hawkins

House of Delegates
District 36

Caroline County
Vote for 1

Jeff Ghrist
Unopposed

House of Delegates
District 36

Kent County
Vote for 1

Jay A. Jacobs
Unopposed

House of Delegates
District 36

Queen Anne's County
Vote for 1

Steve Arentz
Unopposed

County Commissioner
Vote for up to 3

Ron Fithian
Unopposed

Albert Nickerson
Unopposed

John F. Price
Unopposed

Comptroller
Vote for 1

Sonya Dunn
Unopposed

State's Attorney
Vote for 1

Matt Crouch
Unopposed

Attorney General
Vote for 1

James B. Rutledge, III
Unopposed

Judge of the Orphans' Court
Vote for up to 3

Joseph L. Holt
Unopposed

Nomination Vacant

Nomination Vacant

Representative in Congress
District 1
Vote for 1

Chris Bruneau
 Andy Harris

State Senator
District 36
Vote for 1

Steve Hershey
Unopposed

Sheriff
Vote for 1

Dennis W. Hickman, Jr.
Unopposed

Vote Both Sides



Republican Central Committee

Vote for up to 7

Benjamin F. Ray
Unopposed

Mariam Azra Satchell
Unopposed

Dawn P. Sutton
Unopposed

Leonard A. Thompson
Unopposed

Nomination Vacant

Nomination Vacant

Nomination Vacant

End of Ballot



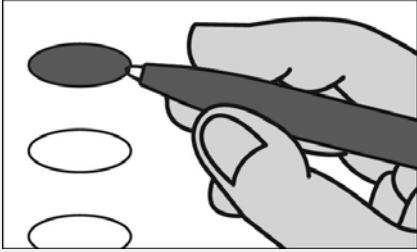
Official Ballot
Gubernatorial Primary Election
June 23, 2026

BS REP 8
005-001

State of Maryland, Kent County
Republican Ballot

Instructions

Making Selections



Fill in the oval to the left of the name of your choice. You must blacken the oval completely, and do not make any marks outside of the oval. You do not have to vote in every race.



Do not cross out or erase, or your vote may not count. If you make a mistake or a stray mark, you may ask for a new ballot.

Governor / Lt. Governor
Vote for 1

Carl A. Brunner, Jr.
and
Kevin L. Rhodes, Sr.

L. D. Burkindine
and
Jeremy M. Shifflett

Dan Cox
and
Rob Krop

Ed Hale
and
Tyrone Keys, Jr.

Douglas Larcomb
and
Martina D. Duncan

John A. Myrick
and
Brenda J. Thiam

Michael Oakes
and
Ronald W. Abend

Nancy Jane Taylor
and
Rachel Hannah "Mohawk"
Swift

Shannon Wright
and
Reba A. Hawkins

House of Delegates
District 36
Caroline County
Vote for 1

Jeff Ghrist
Unopposed

House of Delegates
District 36
Kent County
Vote for 1

Jay A. Jacobs
Unopposed

House of Delegates
District 36
Queen Anne's County
Vote for 1

Steve Arentz
Unopposed

County Commissioner
Vote for up to 3

Ron Fithian
Unopposed

Albert Nickerson
Unopposed

John F. Price
Unopposed

Comptroller
Vote for 1

Sonya Dunn
Unopposed

State's Attorney
Vote for 1

Matt Crouch
Unopposed

Attorney General
Vote for 1

James B. Rutledge, III
Unopposed

Judge of the Orphans' Court
Vote for up to 3

Joseph L. Holt
Unopposed

Nomination Vacant

Nomination Vacant

Representative in Congress
District 1
Vote for 1

Chris Bruneau
 Andy Harris

State Senator
District 36
Vote for 1

Steve Hershey
Unopposed

Sheriff
Vote for 1

Dennis W. Hickman, Jr.
Unopposed

Vote Both Sides



Republican Central Committee

Vote for up to 7

Benjamin F. Ray
Unopposed

Mariam Azra Satchell
Unopposed

Dawn P. Sutton
Unopposed

Leonard A. Thompson
Unopposed

Nomination Vacant

Nomination Vacant

Nomination Vacant

End of Ballot



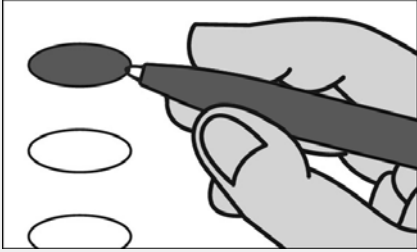
Official Ballot
Gubernatorial Primary Election
June 23, 2026

BS REP 9
006-001

State of Maryland, Kent County
Republican Ballot

Instructions

Making Selections



Fill in the oval to the left of the name of your choice. You must blacken the oval completely, and do not make any marks outside of the oval. You do not have to vote in every race.



Do not cross out or erase, or your vote may not count. If you make a mistake or a stray mark, you may ask for a new ballot.

Governor / Lt. Governor
Vote for 1

Carl A. Brunner, Jr.
and
Kevin L. Rhodes, Sr.

L. D. Burkindine
and
Jeremy M. Shifflett

Dan Cox
and
Rob Krop

Ed Hale
and
Tyrone Keys, Jr.

Douglas Larcomb
and
Martina D. Duncan

John A. Myrick
and
Brenda J. Thiam

Michael Oakes
and
Ronald W. Abend

Nancy Jane Taylor
and
Rachel Hannah "Mohawk"
Swift

Shannon Wright
and
Reba A. Hawkins

House of Delegates
District 36
Caroline County
Vote for 1

Jeff Ghrist
Unopposed

House of Delegates
District 36
Kent County
Vote for 1

Jay A. Jacobs
Unopposed

House of Delegates
District 36
Queen Anne's County
Vote for 1

Steve Arentz
Unopposed

County Commissioner
Vote for up to 3

Ron Fithian
Unopposed

Albert Nickerson
Unopposed

John F. Price
Unopposed

Comptroller
Vote for 1

Sonya Dunn
Unopposed

State's Attorney
Vote for 1

Matt Crouch
Unopposed

Attorney General
Vote for 1

James B. Rutledge, III
Unopposed

Judge of the Orphans' Court
Vote for up to 3

Joseph L. Holt
Unopposed

Nomination Vacant

Nomination Vacant

Representative in Congress
District 1
Vote for 1

Chris Bruneau
 Andy Harris

State Senator
District 36
Vote for 1

Steve Hershey
Unopposed

Sheriff
Vote for 1

Dennis W. Hickman, Jr.
Unopposed

Vote Both Sides



Republican Central Committee

Vote for up to 7

Benjamin F. Ray
Unopposed

Mariam Azra Satchell
Unopposed

Dawn P. Sutton
Unopposed

Leonard A. Thompson
Unopposed

Nomination Vacant

Nomination Vacant

Nomination Vacant

End of Ballot



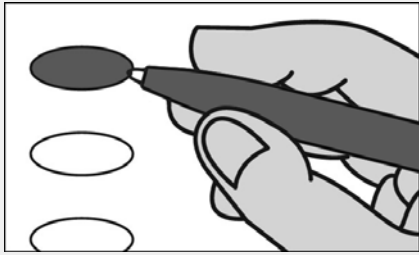
**Official Ballot
Gubernatorial Primary Election
June 23, 2026**

**BS REP 10
007-001**

**State of Maryland, Kent County
Republican Ballot**

Instructions

Making Selections



Fill in the oval to the left of the name of your choice. You must blacken the oval completely, and do not make any marks outside of the oval. You do not have to vote in every race.



Do not cross out or erase, or your vote may not count. If you make a mistake or a stray mark, you may ask for a new ballot.

**Governor / Lt. Governor
Vote for 1**

**Carl A. Brunner, Jr.
and
Kevin L. Rhodes, Sr.**

**L. D. Burkindine
and
Jeremy M. Shifflett**

**Dan Cox
and
Rob Krop**

**Ed Hale
and
Tyrone Keys, Jr.**

**Douglas Larcomb
and
Martina D. Duncan**

**John A. Myrick
and
Brenda J. Thiam**

**Michael Oakes
and
Ronald W. Abend**

**Nancy Jane Taylor
and
Rachel Hannah "Mohawk"
Swift**

**Shannon Wright
and
Reba A. Hawkins**

**House of Delegates
District 36**

**Caroline County
Vote for 1**

**Jeff Ghrist
Unopposed**

**House of Delegates
District 36**

**Kent County
Vote for 1**

**Jay A. Jacobs
Unopposed**

**House of Delegates
District 36**

**Queen Anne's County
Vote for 1**

**Steve Arentz
Unopposed**

**County Commissioner
Vote for up to 3**

**Ron Fithian
Unopposed**

**Albert Nickerson
Unopposed**

**John F. Price
Unopposed**

**Comptroller
Vote for 1**

**Sonya Dunn
Unopposed**

**State's Attorney
Vote for 1**

**Matt Crouch
Unopposed**

**Attorney General
Vote for 1**

**James B. Rutledge, III
Unopposed**

**Judge of the Orphans' Court
Vote for up to 3**

**Joseph L. Holt
Unopposed**

Nomination Vacant

Nomination Vacant

**Representative in Congress
District 1
Vote for 1**

Chris Bruneau

Andy Harris

**Sheriff
Vote for 1**

**Dennis W. Hickman, Jr.
Unopposed**

**State Senator
District 36
Vote for 1**

**Steve Hershey
Unopposed**

Vote Both Sides



Republican Central Committee

Vote for up to 7

Benjamin F. Ray
Unopposed

Mariam Azra Satchell
Unopposed

Dawn P. Sutton
Unopposed

Leonard A. Thompson
Unopposed

Nomination Vacant

Nomination Vacant

Nomination Vacant

End of Ballot

